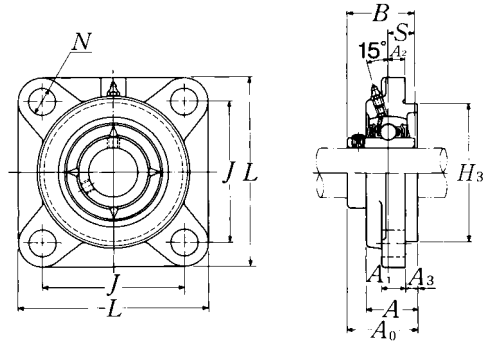


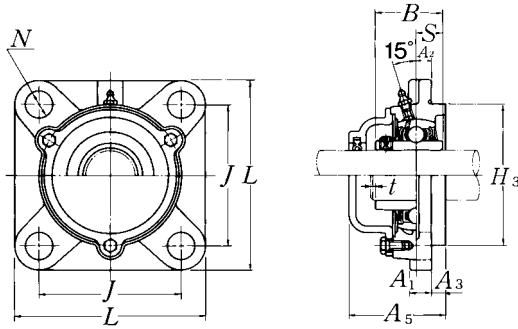
### Flanged cartridge units cast housing Set screw type



Shaft dia. mm inch	Unit number <sup>1)</sup>	Nominal dimensions											Bolt size mm inch
		L	J	A <sub>2</sub>	N	A <sub>3</sub>	A <sub>1</sub>	A	H <sub>3</sub>	A <sub>0</sub>	B	S	
<b>25</b> 13/16 7/8 15/16 1	<b>UCFS305D1</b> <b>UCFS305-013D1</b> <b>UCFS305-014D1</b> <b>UCFS305-015D1</b> <b>UCFS305-100D1</b>	110	80	9	16	7	13	29	80	39	38	15	M14
		4 11/32	3 5/32	23/64	5/8	9/32	1/2	1 9/64	3.1496	1 17/32	1.4961	0.591	1/2
<b>30</b> 1 1/16 1 1/8 1 3/16	<b>UCFS306D1</b> <b>UCFS306-101D1</b> <b>UCFS306-102D1</b> <b>UCFS306-103D1</b>	125	95	10	16	8	15	32	90	44	43	17	M14
		4 29/32	3 47/64	25/64	5/8	5/16	19/32	1 17/64	3.5433	1 47/64	1.6929	0.669	1/2
<b>35</b> 1 1/4 1 5/16 1 3/8 1 7/16	<b>UCFS307D1</b> <b>UCFS307-104D1</b> <b>UCFS307-105D1</b> <b>UCFS307-106D1</b> <b>UCFS307-107D1</b>	135	100	11	19	9	16	36	100	49	48	19	M16
		5 5/16	3 15/16	7/16	3/4	23/64	5/8	1 13/32	3.9370	1 59/64	1.8898	0.748	5/8
<b>40</b> 1 1/2 1 9/16	<b>UCFS308D1</b> <b>UCFS308-108D1</b> <b>UCFS308-109D1</b>	150	112	13	19	10	17	40	115	56	52	19	M16
		5 29/32	4 13/32	33/64	3/4	25/64	21/32	1 9/16	4.5276	2 13/64	2.0472	0.748	5/8
<b>45</b> 1 5/8 1 11/16 1 3/4	<b>UCFS309D1</b> <b>UCFS309-110D1</b> <b>UCFS309-111D1</b> <b>UCFS309-112D1</b>	160	125	14	19	11	18	44	125	60	57	22	M16
		6 5/16	4 59/64	35/64	3/4	7/16	23/32	1 47/64	4.9213	2 23/64	2.2441	0.866	5/8
<b>50</b> 1 13/16 1 7/8 1 15/16	<b>UCFS310D1</b> <b>UCFS310-113D1</b> <b>UCFS310-114D1</b> <b>UCFS310-115D1</b>	175	132	16	23	12	19	48	140	67	61	22	M20
		6 7/8	5 13/64	5/8	29/32	15/32	3/4	1 57/64	5.5118	2 41/64	2.4016	0.866	3/4
<b>55</b> 2 2 1/16 2 1/8 2 3/16	<b>UCFS311D1</b> <b>UCFS311-200D1</b> <b>UCFS311-201D1</b> <b>UCFS311-202D1</b> <b>UCFS311-203D1</b>	185	140	17	23	13	20	52	150	71	66	25	M20
		7 9/32	5 33/64	43/64	29/32	33/64	25/32	2 3/64	5.9055	2 51/64	2.5984	0.984	3/4

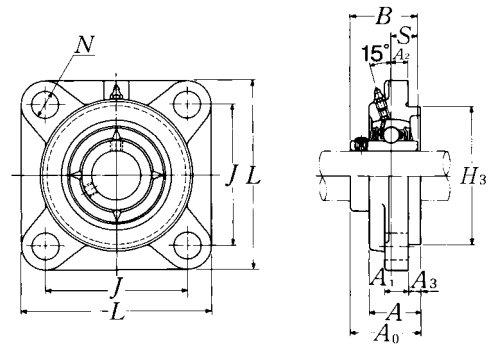
Remarks: 1) These numbers indicate relubricatable type. If maintenance free type is needed, please order without suffix "D1".

Note: Please refer to page 25 for size of grease fitting.

**Cast dust cover type**Open end: **C-UCFS...D1**Closed end: **CM-UCFS...D1**

Bearing number	Housing number	Unit number cast dust cover type	Nominal dimensions		Mass of unit	
			mm <i>t</i> max.	inch <i>A</i> <sub>5</sub>	kg UCFS	lb C(CM)
UC305D1	FS305D1	<b>C(CM)-UCFS305D1</b>	2	56	1.3	1.8
UC305-013D1	FS305D1	<b>C(CM)-UCFS305-013D1</b>				
UC305-014D1	FS305D1	<b>C(CM)-UCFS305-014D1</b>	$\frac{5}{64}$	$2\frac{13}{64}$	2.9	4.0
UC305-015D1	FS305D1	<b>C(CM)-UCFS305-015D1</b>				
UC305-100D1	FS305D1	<b>C(CM)-UCFS305-100D1</b>				
UC306D1	FS306D1	<b>C(CM)-UCFS306D1</b>	2	60	1.9	2.4
UC306-101D1	FS306D1	<b>C(CM)-UCFS306-101D1</b>				
UC306-102D1	FS306D1	<b>C(CM)-UCFS306-102D1</b>	$\frac{5}{64}$	$2\frac{23}{64}$	4.2	5.3
UC306-103D1	FS306D1	<b>C(CM)-UCFS306-103D1</b>				
UC307D1	FS307D1	<b>C(CM)-UCFS307D1</b>	3	67	2.4	3.0
UC307-104D1	FS307D1	<b>C(CM)-UCFS307-104D1</b>				
UC307-105D1	FS307D1	<b>C(CM)-UCFS307-105D1</b>	$\frac{1}{8}$	$2\frac{41}{64}$	5.3	6.6
UC307-106D1	FS307D1	<b>C(CM)-UCFS307-106D1</b>				
UC307-107D1	FS307D1	<b>C(CM)-UCFS307-107D1</b>				
UC308D1	FS308D1	<b>C(CM)-UCFS308D1</b>	3	76	3.3	4.1
UC308-108D1	FS308D1	<b>C(CM)-UCFS308-108D1</b>	$\frac{1}{8}$	$2\frac{63}{64}$	7.3	9.0
UC308-109D1	FS308D1	<b>C(CM)-UCFS308-109D1</b>				
UC309D1	FS309D1	<b>C(CM)-UCFS309D1</b>	3	80	4.0	5.1
UC309-110D1	FS309D1	<b>C(CM)-UCFS309-110D1</b>				
UC309-111D1	FS309D1	<b>C(CM)-UCFS309-111D1</b>	$\frac{1}{8}$	$3\frac{5}{32}$	8.8	11
UC309-112D1	FS309D1	<b>C(CM)-UCFS309-112D1</b>				
UC310D1	FS310D1	<b>C(CM)-UCFS310D1</b>	3	88	5.3	6.7
UC310-113D1	FS310D1	<b>C(CM)-UCFS310-113D1</b>				
UC310-114D1	FS310D1	<b>C(CM)-UCFS310-114D1</b>	$\frac{1}{8}$	$3\frac{15}{32}$	12	15
UC310-115D1	FS310D1	<b>C(CM)-UCFS310-115D1</b>				
UC311D1	FS311D1	<b>C(CM)-UCFS311D1</b>	4	93	6.2	8.2
UC311-200D1	FS311D1	<b>C(CM)-UCFS311-200D1</b>				
UC311-201D1	FS311D1	<b>C(CM)-UCFS311-201D1</b>				
UC311-202D1	FS311D1	<b>C(CM)-UCFS311-202D1</b>	$\frac{5}{32}$	$3\frac{21}{32}$	14	18
UC311-203D1	FS311D1	<b>C(CM)-UCFS311-203D1</b>				

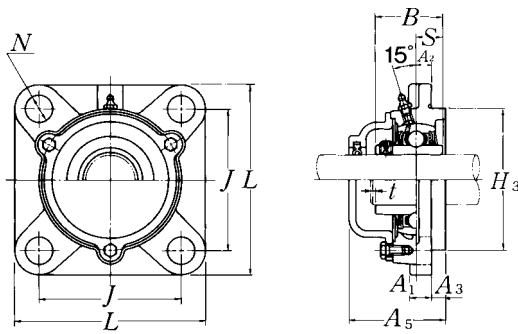
## Flanged cartridge units cast housing Set screw type



Shaft dia. mm inch	Unit number <sup>1)</sup>	Nominal dimensions											Bolt size mm inch
		L	J	A <sub>2</sub>	N	A <sub>3</sub>	A <sub>1</sub>	A	H <sub>3</sub>	A <sub>0</sub>	B	S	
<b>60</b> 2 <sup>1</sup> / <sub>4</sub> 2 <sup>5</sup> / <sub>16</sub> 2 <sup>3</sup> / <sub>8</sub> 2 <sup>7</sup> / <sub>16</sub>	<b>UCFS312D1</b> <b>UCFS312-204D1</b> <b>UCFS312-205D1</b> <b>UCFS312-206D1</b> <b>UCFS312-207D1</b>	195	150	19	23	14	22	56	160	78	71	26	M20    3/4
<b>65</b> 2 <sup>1</sup> / <sub>2</sub> 2 <sup>9</sup> / <sub>16</sub>	<b>UCFS313D1</b> <b>UCFS313-208D1</b> <b>UCFS313-209D1</b>	208	166	15	23	18	22	58	175	78	75	30	M20   3/4
<b>70</b> 2 <sup>5</sup> / <sub>8</sub> 2 <sup>11</sup> / <sub>16</sub> 2 <sup>3</sup> / <sub>4</sub>	<b>UCFS314D1</b> <b>UCFS314-210D1</b> <b>UCFS314-211D1</b> <b>UCFS314-212D1</b>	226	178	18	25	18	25	61	185	81	78	33	M22   7/8
<b>75</b> 2 <sup>13</sup> / <sub>16</sub> 2 <sup>7</sup> / <sub>8</sub> 2 <sup>15</sup> / <sub>16</sub> 3	<b>UCFS315D1</b> <b>UCFS315-213D1</b> <b>UCFS315-214D1</b> <b>UCFS315-215D1</b> <b>UCFS315-300D1</b>	236	184	21	25	18	25	66	200	89	82	32	M22   7/8
<b>80</b> 3 <sup>1</sup> / <sub>16</sub> 3 <sup>1</sup> / <sub>8</sub> 3 <sup>3</sup> / <sub>16</sub>	<b>UCFS316D1</b> <b>UCFS316-301D1</b> <b>UCFS316-302D1</b> <b>UCFS316-303D1</b>	250	196	18	31	20	27	68	210	90	86	34	M27   1
<b>85</b> 3 <sup>1</sup> / <sub>4</sub> 3 <sup>5</sup> / <sub>16</sub> 3 <sup>7</sup> / <sub>16</sub>	<b>UCFS317D1</b> <b>UCFS317-304D1</b> <b>UCFS317-305D1</b> <b>UCFS317-307D1</b>	260	204	24	31	20	27	74	220	100	96	40	M27   1
<b>90</b> 3 <sup>7</sup> / <sub>16</sub> 3 <sup>1</sup> / <sub>2</sub>	<b>UCFS318D1</b> <b>UCFS318-307D1</b> <b>UCFS318-308D1</b>	280	216	24	35	20	30	76	240	100	96	40	M30   1 <sup>1</sup> / <sub>8</sub>

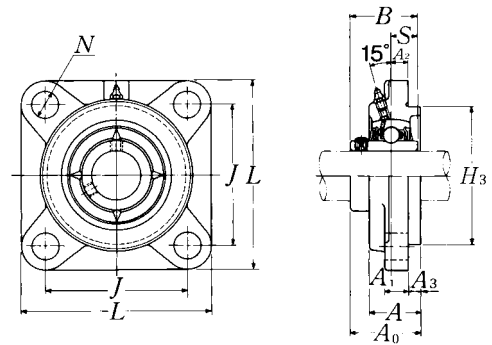
Remarks: 1) These numbers indicate relubricatable type. If maintenance free type is needed, please order without suffix "D1".

Note: Please refer to page 25 for size of grease fitting.

**Cast dust cover type**Open end: **C-UCFS...D1**Closed end: **CM-UCFS...D1**

Bearing number	Housing number	Unit number cast dust cover type	Nominal dimensions		Mass of unit	
			mm	inch	kg	lb
			<i>t</i> max.	<i>A</i> <sub>5</sub>	UCFS	C(CM)
UC312D1	FS312D1	<b>C(CM)-UCFS312D1</b>	4	100	7.2	9.0
UC312-204D1	FS312D1	<b>C(CM)-UCFS312-204D1</b>				
UC312-205D1	FS312D1	<b>C(CM)-UCFS312-205D1</b>	$\frac{5}{32}$	$3\frac{15}{16}$	16	20
UC312-206D1	FS312D1	<b>C(CM)-UCFS312-206D1</b>				
UC312-207D1	FS312D1	<b>C(CM)-UCFS312-207D1</b>				
UC313D1	FS313D1	<b>C(CM)-UCFS313D1</b>	4	103	8.9	11
UC313-208D1	FS313D1	<b>C(CM)-UCFS313-208D1</b>	$\frac{5}{32}$	$4\frac{1}{16}$	20	24
UC313-209D1	FS313D1	<b>C(CM)-UCFS313-209D1</b>				
UC314D1	FS314D1	<b>C(CM)-UCFS314D1</b>	4	106	11	14
UC314-210D1	FS314D1	<b>C(CM)-UCFS314-210D1</b>				
UC314-211D1	FS314D1	<b>C(CM)-UCFS314-211D1</b>	$\frac{5}{32}$	$4\frac{11}{64}$	24	31
UC314-212D1	FS314D1	<b>C(CM)-UCFS314-212D1</b>				
UC315D1	FS315D1	<b>C(CM)-UCFS315D1</b>	4	114	13	15
UC315-213D1	FS315D1	<b>C(CM)-UCFS315-213D1</b>				
UC315-214D1	FS315D1	<b>C(CM)-UCFS315-214D1</b>	$\frac{5}{32}$	$4\frac{31}{64}$	29	33
UC315-215D1	FS315D1	<b>C(CM)-UCFS315-215D1</b>				
UC315-300D1	FS315D1	<b>C(CM)-UCFS315-300D1</b>				
UC316D1	FS316D1	<b>C(CM)-UCFS316D1</b>	4	116	15	18
UC316-301D1	FS316D1	<b>C(CM)-UCFS316-301D1</b>				
UC316-302D1	FS316D1	<b>C(CM)-UCFS316-302D1</b>	$\frac{5}{32}$	$4\frac{9}{16}$	33	40
UC316-303D1	FS316D1	<b>C(CM)-UCFS316-303D1</b>				
UC317D1	FS317D1	<b>C(CM)-UCFS317D1</b>	5	129	17	22
UC317-304D1	FS317D1	<b>C(CM)-UCFS317-304D1</b>				
UC317-305D1	FS317D1	<b>C(CM)-UCFS317-305D1</b>	$\frac{13}{64}$	$5\frac{5}{64}$	37	49
UC317-307D1	FS317D1	<b>C(CM)-UCFS317-307D1</b>				
UC318D1	FS318D1	<b>C(CM)-UCFS318D1</b>	5	129	21	26
UC318-307D1	FS318D1	<b>C(CM)-UCFS318-307D1</b>	$\frac{13}{64}$	$5\frac{5}{64}$	46	57
UC318-308D1	FS318D1	<b>C(CM)-UCFS318-308D1</b>				

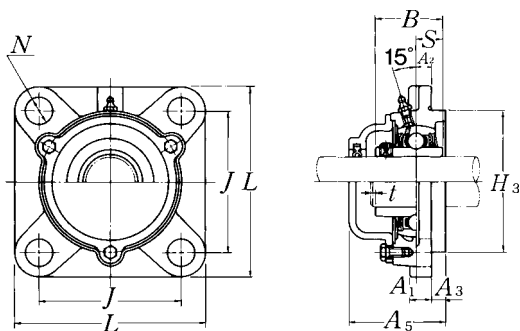
## Flanged cartridge units cast housing Set screw type



Shaft dia.	Unit number <sup>1)</sup>	Nominal dimensions											Bolt size
		mm					inch						
mm inch		L	J	A <sub>2</sub>	N	A <sub>3</sub>	A <sub>1</sub>	A	H <sub>3</sub>	A <sub>0</sub>	B	S	mm inch
<b>95</b>	<b>UCFS319D1</b>	290	228	39	35	20	30	94	250	121	103	41	M30
<b>3<sup>5</sup>/<sub>8</sub></b>	<b>UCFS319-310D1</b>												
<b>3<sup>11</sup>/<sub>16</sub></b>	<b>UCFS319-311D1</b>	11 <sup>13</sup> / <sub>32</sub>	8 <sup>31</sup> / <sub>32</sub>	1 <sup>17</sup> / <sub>32</sub>	1 <sup>3</sup> / <sub>8</sub>	2 <sup>5</sup> / <sub>32</sub>	1 <sup>3</sup> / <sub>16</sub>	3 <sup>45</sup> / <sub>64</sub>	9.8425	4 <sup>49</sup> / <sub>64</sub>	4.0551	1.614	1 <sup>1</sup> / <sub>8</sub>
<b>3<sup>3</sup>/<sub>4</sub></b>	<b>UCFS319-312D1</b>												
<b>100</b>	<b>UCFS320D1</b>	310	242	39	38	20	32	94	260	125	108	42	M33
<b>3<sup>13</sup>/<sub>16</sub></b>	<b>UCFS320-313D1</b>												
<b>3<sup>7</sup>/<sub>8</sub></b>	<b>UCFS320-314D1</b>	12 <sup>7</sup> / <sub>32</sub>	9 <sup>17</sup> / <sub>32</sub>	1 <sup>17</sup> / <sub>32</sub>	1 <sup>1</sup> / <sub>2</sub>	2 <sup>5</sup> / <sub>32</sub>	1 <sup>1</sup> / <sub>4</sub>	3 <sup>45</sup> / <sub>64</sub>	10.2362	4 <sup>59</sup> / <sub>64</sub>	4.2520	1.654	1 <sup>1</sup> / <sub>4</sub>
<b>3<sup>15</sup>/<sub>16</sub></b>	<b>UCFS320-315D1</b>												
<b>4</b>	<b>UCFS320-400D1</b>												
<b>105</b>	<b>UCFS321D1</b>	310	242	39	38	20	32	94	260	127	112	44	M33
<b>110</b>	<b>UCFS322D1</b>	340	266	35	41	25	35	96	300	131	117	46	M36
<b>120</b>	<b>UCFS324D1</b>	370	290	35	41	30	40	110	330	140	126	51	M36
<b>130</b>	<b>UCFS326D1</b>	410	320	35	41	30	45	115	360	146	135	54	M36
<b>140</b>	<b>UCFS328D1</b>	450	350	45	41	30	55	125	400	161	145	59	M36

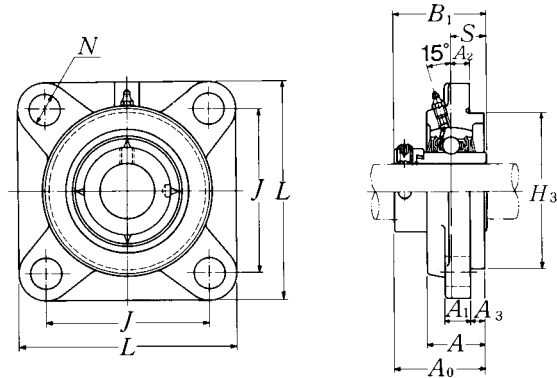
Remarks: 1) These numbers indicate relubricatable type. If maintenance free type is needed, please order without suffix "D1".

Note: Please refer to page 25 for size of grease fitting.

**Cast dust cover type**Open end: **C-UCFS...D1**Closed end: **CM-UCFS...D1**

Bearing number	Housing number	Unit number cast dust cover type	Nominal dimensions		Mass of unit	
			mm	inch	kg	lb
			<i>t</i> max.	<i>A</i> <sub>5</sub>	UCFS	C(CM)
UC319D1	FS319D1	<b>C(CM)-UCFS319D1</b>	5	149	25	30
UC319-310D1	FS319D1	<b>C(CM)-UCFS319-310D1</b>				
UC319-311D1	FS319D1	<b>C(CM)-UCFS319-311D1</b>	13/64	5 <sup>55</sup> /64	55	66
UC319-312D1	FS319D1	<b>C(CM)-UCFS319-312D1</b>				
UC320D1	FS320D1	<b>C(CM)-UCFS320D1</b>	5	154	30	34
UC320-313D1	FS320D1	<b>C(CM)-UCFS320-313D1</b>				
UC320-314D1	FS320D1	<b>C(CM)-UCFS320-314D1</b>	13/64	6 <sup>1</sup> /16	66	75
UC320-315D1	FS320D1	<b>C(CM)-UCFS320-315D1</b>				
UC320-400D1	FS320D1	<b>C(CM)-UCFS320-400D1</b>				
UC321D1	FS321D1	<b>C(CM)-UCFS321D1</b>	5	156	29	37
UC322D1	FS322D1	<b>C(CM)-UCFS322D1</b>	5	160	39	47
UC324D1	FS324D1	<b>C(CM)-UCFS324D1</b>	5	172	54	63
UC326D1	FS326D1	<b>C(CM)-UCFS326D1</b>	6	178	71	84
UC328D1	FS328D1	<b>C(CM)-UCFS328D1</b>	6	192	100	119

**Flanged cartridge units cast housing  
Eccentric locking collar type**



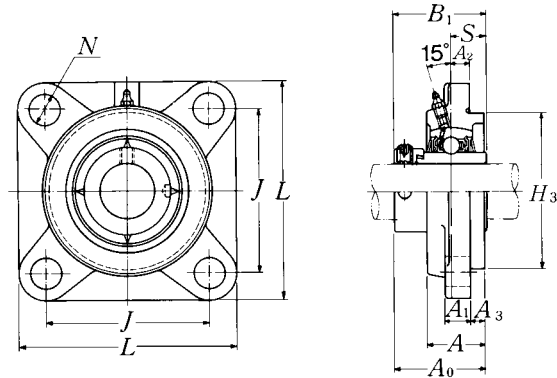
Shaft dia.	Unit number <sup>1)</sup>	Nominal dimensions											Bolt size
		mm					inch						
mm inch		L	J	A <sub>2</sub>	N	A <sub>3</sub>	A <sub>1</sub>	A	H <sub>3</sub>	A <sub>0</sub>	B <sub>1</sub>	S	mm inch
<b>25</b>	<b>UELFS305D1W3</b>	110	80	9	16	7	13	29	80	46.1	46.8	16.7	M14
$\frac{13}{16}$	<b>UELFS305-013D1W3</b>												
$\frac{7}{8}$	<b>UELFS305-014D1W3</b>	$4\frac{11}{32}$	$3\frac{5}{32}$	$\frac{23}{64}$	$\frac{5}{8}$	$\frac{9}{32}$	$\frac{1}{2}$	$1\frac{9}{64}$	3.1496	$1\frac{13}{16}$	1.843	0.657	$\frac{1}{2}$
$\frac{15}{16}$	<b>UELFS305-015D1W3</b>												
<b>1</b>	<b>UELFS305-100D1W3</b>												
<b>30</b>	<b>UELFS306D1W3</b>	125	95	10	16	8	15	32	90	50.5	50	17.5	M14
$\frac{1}{16}$	<b>UELFS306-101D1W3</b>												
$\frac{1}{8}$	<b>UELFS306-102D1W3</b>	$4\frac{29}{32}$	$3\frac{47}{64}$	$\frac{25}{64}$	$\frac{5}{8}$	$\frac{5}{16}$	$\frac{19}{32}$	$1\frac{17}{64}$	3.5433	$1\frac{63}{64}$	1.969	0.689	$\frac{1}{2}$
$\frac{3}{16}$	<b>UELFS306-103D1W3</b>												
<b>35</b>	<b>UELFS307D1W3</b>	135	100	11	19	9	16	36	100	53.3	51.6	18.3	M16
$\frac{1}{4}$	<b>UELFS307-104D1W3</b>												
$\frac{5}{16}$	<b>UELFS307-105D1W3</b>	$5\frac{5}{16}$	$3\frac{15}{16}$	$\frac{7}{16}$	$\frac{3}{4}$	$\frac{23}{64}$	$\frac{5}{8}$	$1\frac{13}{32}$	3.9370	$2\frac{3}{32}$	2.031	0.720	$\frac{5}{8}$
$\frac{3}{8}$	<b>UELFS307-106D1W3</b>												
$\frac{7}{16}$	<b>UELFS307-107D1W3</b>												
<b>40</b>	<b>UELFS308D1W3</b>	150	112	13	19	10	17	40	115	60.3	57.1	19.8	M16
$\frac{1}{2}$	<b>UELFS308-108D1W3</b>												
$\frac{9}{16}$	<b>UELFS308-109D1W3</b>	$5\frac{29}{32}$	$4\frac{13}{32}$	$\frac{33}{64}$	$\frac{3}{4}$	$\frac{25}{64}$	$\frac{21}{32}$	$1\frac{9}{16}$	4.5276	$2\frac{3}{8}$	2.248	0.780	$\frac{5}{8}$
<b>45</b>	<b>UELFS309D1W3</b>	160	125	14	19	11	18	44	125	63.9	58.7	19.8	M16
$\frac{5}{8}$	<b>UELFS309-110D1W3</b>												
$\frac{11}{16}$	<b>UELFS309-111D1W3</b>	$6\frac{5}{16}$	$4\frac{59}{64}$	$\frac{35}{64}$	$\frac{3}{4}$	$\frac{7}{16}$	$\frac{23}{32}$	$1\frac{47}{64}$	4.9213	$2\frac{33}{64}$	2.311	0.780	$\frac{5}{8}$
$\frac{3}{4}$	<b>UELFS309-112D1W3</b>												
<b>50</b>	<b>UELFS310D1W3</b>	175	132	16	23	12	19	48	140	70	66.6	24.6	M20
$\frac{13}{16}$	<b>UELFS310-113D1W3</b>												
$\frac{1}{8}$	<b>UELFS310-114D1W3</b>	$6\frac{7}{8}$	$5\frac{13}{64}$	$\frac{5}{8}$	$\frac{29}{32}$	$\frac{15}{32}$	$\frac{3}{4}$	$1\frac{57}{64}$	5.5118	$2\frac{3}{4}$	2.622	0.969	$\frac{3}{4}$
$\frac{15}{16}$	<b>UELFS310-115D1W3</b>												
<b>55</b>	<b>UELFS311D1W3</b>	185	140	17	23	13	20	52	150	75.2	73	27.8	M20
<b>2</b>	<b>UELFS311-200D1W3</b>												
$\frac{21}{16}$	<b>UELFS311-201D1W3</b>	$7\frac{9}{32}$	$5\frac{33}{64}$	$\frac{43}{64}$	$\frac{29}{32}$	$\frac{33}{64}$	$\frac{25}{32}$	$2\frac{3}{64}$	5.9055	$2\frac{61}{64}$	2.874	1.094	$\frac{3}{4}$
$\frac{2}{8}$	<b>UELFS311-202D1W3</b>												
$\frac{23}{16}$	<b>UELFS311-203D1W3</b>												

Remarks: 1) These numbers indicate relubricatable type. If maintenance free type is needed, please order without suffix "D1".

Note: Please refer to page 25 for size of grease fitting.

Bearing number	Housing number	Mass of unit	
		kg	lb
UEL305D1W3	FS305D1	1.4	
UEL305-013D1W3	FS305D1		
UEL305-014D1W3	FS305D1	3.1	
UEL305-015D1W3	FS305D1		
UEL305-100D1W3	FS305D1		
UEL306D1W3	FS306D1	2.0	
UEL306-101D1W3	FS306D1		
UEL306-102D1W3	FS306D1	4.4	
UEL306-103D1W3	FS306D1		
UEL307D1W3	FS307D1	2.4	
UEL307-104D1W3	FS307D1		
UEL307-105D1W3	FS307D1	5.3	
UEL307-106D1W3	FS307D1		
UEL307-107D1W3	FS307D1		
UEL308D1W3	FS308D1	3.4	
UEL308-108D1W3	FS308D1	7.5	
UEL308-109D1W3	FS308D1		
UEL309D1W3	FS309D1	4.2	
UEL309-110D1W3	FS309D1		
UEL309-111D1W3	FS309D1	9.3	
UEL309-112D1W3	FS309D1		
UEL310D1W3	FS310D1	5.5	
UEL310-113D1W3	FS310D1		
UEL310-114D1W3	FS310D1	12	
UEL310-115D1W3	FS310D1		
UEL311D1W3	FS311D1	6.5	
UEL311-200D1W3	FS311D1		
UEL311-201D1W3	FS311D1	14	
UEL311-202D1W3	FS311D1		
UEL311-203D1W3	FS311D1		

**Flanged cartridge units cast housing  
Eccentric locking collar type**



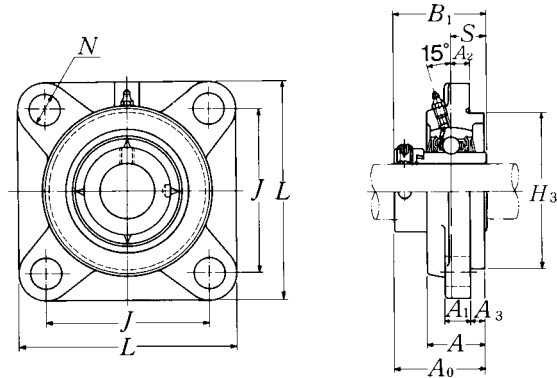
Shaft dia.	Unit number <sup>1)</sup>	Nominal dimensions											Bolt size
		mm					inch						
mm inch		L	J	A <sub>2</sub>	N	A <sub>3</sub>	A <sub>1</sub>	A	H <sub>3</sub>	A <sub>0</sub>	B <sub>1</sub>	S	mm inch
<b>60</b>	<b>UELFS312D1W3</b>	195	150	19	23	14	22	56	160	81.5	79.4	30.95	M20
<b>2 1/4</b>	<b>UELFS312-204D1W3</b>												
<b>2 5/16</b>	<b>UELFS312-205D1W3</b>	7 11/16	5 29/32	3/4	29/32	35/64	7/8	2 13/16	6.2992	3 13/64	3.126	1.219	3/4
<b>2 3/8</b>	<b>UELFS312-206D1W3</b>												
<b>2 7/16</b>	<b>UELFS312-207D1W3</b>												
<b>65</b>	<b>UELFS313D1W3</b>	208	166	15	23	18	22	58	175	86.2	85.7	32.55	M20
<b>2 1/2</b>	<b>UELFS313-208D1W3</b>												
<b>2 9/16</b>	<b>UELFS313-209D1W3</b>	8 3/16	6 17/32	19/32	29/32	45/64	7/8	2 9/32	6.8898	3 25/64	3.374	1.281	3/4
<b>70</b>	<b>UELFS314D1W3</b>	226	178	18	25	18	25	61	185	94.0	92.1	34.15	M22
<b>2 5/8</b>	<b>UELFS314-210D1W3</b>												
<b>2 11/16</b>	<b>UELFS314-211D1W3</b>	8 29/32	7 1/64	45/64	63/64	45/64	31/32	2 13/32	7.2835	3 45/64	3.626	1.344	7/8
<b>2 3/4</b>	<b>UELFS314-212D1W3</b>												
<b>75</b>	<b>UELFS315D1W3</b>	236	184	21	25	18	25	66	200	101.7	100	37.3	M22
<b>2 13/16</b>	<b>UELFS315-213D1W3</b>												
<b>2 7/8</b>	<b>UELFS315-214D1W3</b>	9 9/32	7 1/4	53/64	63/64	45/64	31/32	2 19/32	7.8740	4	3.937	1.469	7/8
<b>2 15/16</b>	<b>UELFS315-215D1W3</b>												
<b>3</b>	<b>UELFS315-300D1W3</b>												
<b>80</b>	<b>UELFS316D1W3</b>	250	196	18	31	20	27	68	210	103.9	106.4	40.5	M27
<b>3 1/16</b>	<b>UELFS316-301D1W3</b>												
<b>3 1/8</b>	<b>UELFS316-302D1W3</b>	9 27/32	7 23/32	45/64	1 7/32	25/32	1 1/16	2 43/64	8.2677	4 3/32	4.189	1.594	1
<b>3 3/16</b>	<b>UELFS316-303D1W3</b>												
<b>85</b>	<b>UELFS317D1W3</b>	260	204	24	31	20	27	74	220	111.5	109.5	42.05	M27
<b>3 1/4</b>	<b>UELFS317-304D1W3</b>												
<b>3 5/16</b>	<b>UELFS317-305D1W3</b>	10 1/4	8 1/32	15/16	1 7/32	25/32	1 1/16	2 29/32	8.6614	4 25/64	4.311	1.656	1
<b>3 7/16</b>	<b>UELFS317-307D1W3</b>												
<b>90</b>	<b>UELFS318D1W3</b>	280	216	24	35	20	30	76	240	116.3	115.9	43.65	M30
<b>3 7/16</b>	<b>UELFS318-307D1W3</b>	11 1/32	8 1/2	15/16	1 3/8	25/32	1 3/16	2 63/64	9.4488	4 37/64	4.563	1.719	1 1/8
<b>3 1/2</b>	<b>UELFS318-308D1W3</b>												

Remarks: 1) These numbers indicate relubricatable type. If maintenance free type is needed, please order without suffix "D1".

Note: Please refer to page 25 for size of grease fitting.

Bearing number	Housing number	Mass of unit	
		kg	lb
UEL312D1W3	FS312D1	7.5	
UEL312-204D1W3	FS312D1		
UEL312-205D1W3	FS312D1	17	
UEL312-206D1W3	FS312D1		
UEL312-207D1W3	FS312D1		
UEL313D1W3	FS313D1	9.3	
UEL313-208D1W3	FS313D1	21	
UEL313-209D1W3	FS313D1		
UEL314D1W3	FS314D1	11	
UEL314-210D1W3	FS314D1		
UEL314-211D1W3	FS314D1	24	
UEL314-212D1W3	FS314D1		
UEL315D1W3	FS315D1	13	
UEL315-213D1W3	FS315D1		
UEL315-214D1W3	FS315D1	29	
UEL315-215D1W3	FS315D1		
UEL315-300D1W3	FS315D1		
UEL316D1W3	FS316D1	16	
UEL316-301D1W3	FS316D1		
UEL316-302D1W3	FS316D1	35	
UEL316-303D1W3	FS316D1		
UEL317D1W3	FS317D1	19	
UEL317-304D1W3	FS317D1		
UEL317-305D1W3	FS317D1	42	
UEL317-307D1W3	FS317D1		
UEL318D1W3	FS318D1	23	
UEL318-307D1W3	FS318D1	51	
UEL318-308D1W3	FS318D1		

**Flanged cartridge units cast housing  
Eccentric locking collar type**



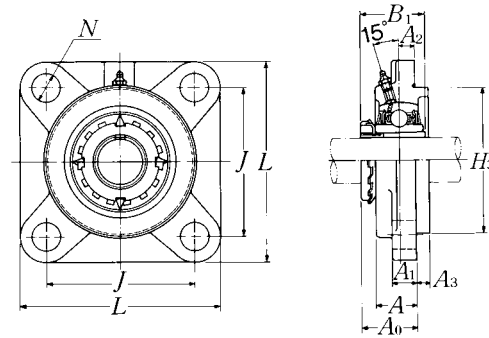
Shaft dia.	Unit number <sup>1)</sup>	Nominal dimensions											Bolt size	
							mm	inch						mm
mm inch		L	J	A <sub>2</sub>	N	A <sub>3</sub>	A <sub>1</sub>	A	H <sub>3</sub>	A <sub>0</sub>	B <sub>1</sub>	S	mm	inch
<b>95</b>	<b>UELFS319D1W3</b>	290	228	39	35	20	30	94	250	142.4	122.3	38.9	M30	
<b>3<sup>5</sup>/<sub>8</sub></b>	<b>UELFS319-310D1W3</b>													
<b>3<sup>11</sup>/<sub>16</sub></b>	<b>UELFS319-311D1W3</b>	11 <sup>13</sup> / <sub>32</sub>	8 <sup>31</sup> / <sub>32</sub>	1 <sup>17</sup> / <sub>32</sub>	1 <sup>3</sup> / <sub>8</sub>	2 <sup>5</sup> / <sub>32</sub>	1 <sup>3</sup> / <sub>16</sub>	3 <sup>45</sup> / <sub>64</sub>	9.8425	5 <sup>39</sup> / <sub>64</sub>	4.815	1.531	1 <sup>1</sup> / <sub>8</sub>	
<b>3<sup>3</sup>/<sub>4</sub></b>	<b>UELFS319-312D1W3</b>													
<b>100</b>	<b>UELFS320D1W3</b>	310	242	39	38	20	32	94	260	137.6	128.6	50	M33	
<b>3<sup>13</sup>/<sub>16</sub></b>	<b>UELFS320-313D1W3</b>													
<b>3<sup>7</sup>/<sub>8</sub></b>	<b>UELFS320-314D1W3</b>	12 <sup>7</sup> / <sub>32</sub>	9 <sup>17</sup> / <sub>32</sub>	1 <sup>17</sup> / <sub>32</sub>	1 <sup>1</sup> / <sub>2</sub>	2 <sup>5</sup> / <sub>32</sub>	1 <sup>1</sup> / <sub>4</sub>	3 <sup>45</sup> / <sub>64</sub>	10.2362	5 <sup>27</sup> / <sub>64</sub>	5.063	1.969	1 <sup>1</sup> / <sub>4</sub>	
<b>3<sup>15</sup>/<sub>16</sub></b>	<b>UELFS320-315D1W3</b>													
<b>4</b>	<b>UELFS320-400D1W3</b>													
<b>105</b>	<b>UELFS321D1W3</b>	310	242	39	38	20	32	94	260	150.3	139.7	48.4	M33	
<b>110</b>	<b>UELFS322D1W3</b>	340	266	35	41	25	35	96	300	152.1	141.3	49.2	M36	

Remarks: 1) These numbers indicate relubricatable type. If maintenance free type is needed, please order without suffix "D1".

Note: Please refer to page 25 for size of grease fitting.

Bearing number	Housing number	Mass of unit	
		kg	lb
UEL319D1W3	FS319D1	26	
UEL319-310D1W3	FS319D1		
UEL319-311D1W3	FS319D1	57	
UEL319-312D1W3	FS319D1		
UEL320D1W3	FS320D1	32	
UEL320-313D1W3	FS320D1		
UEL320-314D1W3	FS320D1	71	
UEL320-315D1W3	FS320D1		
UEL320-400D1W3	FS320D1		
UEL321D1W3	FS321D1	32	
UEL322D1W3	FS322D1	42	

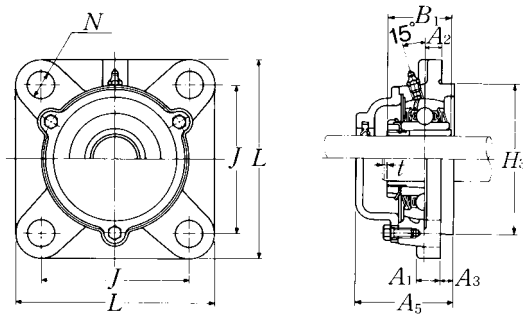
Flanged cartridge units cast housing  
Adapter type



Shaft dia.	Unit number <sup>1) 2) 3)</sup>	Nominal dimensions											Bolt size	Bearing number
		mm					inch							
mm inch		L	J	A <sub>2</sub>	N	A <sub>3</sub>	A <sub>1</sub>	A	H <sub>3</sub>	A <sub>0</sub>	B <sub>1</sub>	mm inch		
20 3/4	UKFS305D1;H2305X UKFS305D1;HE2305	110 4 11/32	80 3 5/32	9 23/64	16 5/8	7 9/32	13 1/2	29 1 9/64	80 3.1496	37 1 29/64	35 1.378	M14 1/2	UK305D1;H2305X UK305D1;HE2305	
25 7/8 1	UKFS306D1;H2306X UKFS306D1;HS2306 UKFS306D1;HE2306X	125 4 29/32	95 3 47/64	10 25/64	16 5/8	8 5/16	15 19/32	32 1 17/64	90 3.5433	40.5 1 19/32	38 1.496	M14 1/2	UK306D1;H2306X UK306D1;HS2306 UK306D1;HE2306X	
30 1 1/8	UKFS307D1;H2307X UKFS307D1;HS2307	135 5 5/16	100 3 15/16	11 7/16	19 3/4	9 23/64	16 5/8	36 1 13/32	100 3.9370	45.5 1 51/64	43 1.693	M16 5/8	UK307D1;H2307X UK307D1;HS2307	
35 1 1/4 1 3/8	UKFS308D1;H2308X UKFS308D1;HE2308X UKFS308D1;HS2308X	150 5 29/32	112 4 13/32	13 33/64	19 3/4	10 25/64	17 2 1/32	40 1 9/16	115 4.5276	50 1 31/32	46 1.811	M16 5/8	UK308D1;H2308X UK308D1;HE2308X UK308D1;HS2308X	
40 1 7/16 1 1/2 1 5/8	UKFS309D1;H2309X UKFS309D1;HA2309 UKFS309D1;HE2309X UKFS309D1;HS2309X	160 6 5/16	125 4 59/64	14 35/64	19 3/4	11 7/16	18 23/32	44 1 47/64	125 4.9213	54.5 2 9/64	50 1.969	M16 5/8	UK309D1;H2309X UK309D1;HA2309 UK309D1;HE2309X UK309D1;HS2309X	
45 1 5/8 1 11/16 1 3/4	UKFS310D1;H2310X UKFS310D1;HS2310 UKFS310D1;HA2310 UKFS310D1;HE2310X	175 6 7/8	132 5 13/64	16 5/8	23 29/32	12 15/32	19 3/4	48 1 57/64	140 5.5118	60.5 2 3/8	55 2.165	M20 3/4	UK310D1;H2310X UK310D1;HS2310 UK310D1;HA2310 UK310D1;HE2310X	
50 1 7/8 1 15/16 2	UKFS311D1;H2311X UKFS311D1;HS2311 UKFS311D1;HA2311 UKFS311D1;HE2311XY	185 7 9/32	140 5 33/64	17 43/64	23 29/32	13 33/64	20 25/32	52 2 3/64	150 5.9055	64 2 33/64	59 2.323	M20 3/4	UK311D1;H2311X UK311D1;HS2311 UK311D1;HA2311 UK311D1;HE2311XY	
55 2 1/8	UKFS312D1;H2312X UKFS312D1;HS2312	195 7 11/16	150 5 29/32	19 3/4	23 29/32	14 35/64	22 7/8	56 2 13/64	160 6.2992	69.5 2 47/64	62 2.441	M20 3/4	UK312D1;H2312X UK312D1;HS2312	
60 2 3/16 2 1/4 2 3/8	UKFS313D1;H2313X UKFS313D1;HA2313 UKFS313D1;HE2313X UKFS313D1;HS2313X	208 8 3/16	166 6 17/32	15 19/32	23 29/32	18 45/64	22 7/8	58 2 9/32	175 6.8898	71.5 2 13/16	65 2.559	M20 3/4	UK313D1;H2313X UK313D1;HA2313 UK313D1;HE2313X UK313D1;HS2313X	

Remarks: 1) These numbers indicate relubricatable type. If maintenance free type is needed, please order without suffix "D1".  
 2) Adapter number with suffix "X" means a narrow slot type adapter sleeve.  
 In this case the lock washer with the straight inner prong should be used.  
 3) For HE2311XY, screw thread pitch different from the standard is applied, because of the thin thread section of sleeve.  
 To distinguish it, a suffix "Y" is added.  
 4) If the inch series housing units with dust cover are ordered with a closed end, the suffixes E, S or A are not included.  
 Example: CM-UKFS305D1; HE2305

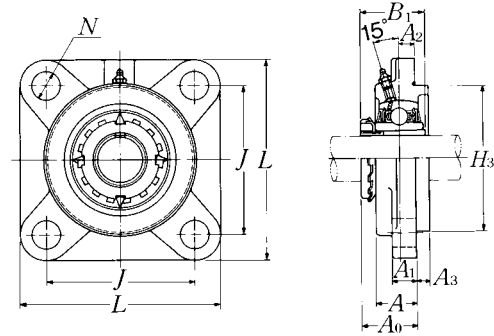
Note: Please refer to page 25 for size of grease fitting.



Cast dust cover type  
 Open end: **C-UKFS...D1**  
 Closed end: **CM-UKFS...D1**

Housing number	Unit number <sup>4)</sup> cast dust cover type	Nominal dimensions		Mass of unit	
		mm	inch	kg	lb
		<i>t</i> max.	<i>A<sub>5</sub></i>	UKFS	C(CM)
FS305D1	<b>C(CM)-UKFS305D1;H2305X</b>	2	56	1.3	1.8
FS305D1	<b>C(CM)-UKFS305ED1;HE2305</b>	5/64	2 <sup>13</sup> /64	2.9	4.0
FS306D1	<b>C(CM)-UKFS306D1;H2306X</b>	2	60	1.9	2.5
FS306D1	<b>C(CM)-UKFS306SD1;HS2306</b>	5/64	2 <sup>23</sup> /64	4.2	5.5
FS306D1	<b>C(CM)-UKFS306ED1;HE2306X</b>				
FS307D1	<b>C(CM)-UKFS307D1;H2307X</b>	3	67	2.4	3.1
FS307D1	<b>C(CM)-UKFS307SD1;HS2307</b>	1/8	2 <sup>41</sup> /64	5.3	6.8
FS308D1	<b>C(CM)-UKFS308D1;H2308X</b>	3	76	3.3	4.2
FS308D1	<b>C(CM)-UKFS308ED1;HE2308X</b>	1/8	2 <sup>63</sup> /64	7.3	9.3
FS308D1	<b>C(CM)-UKFS308D1;HS2308X</b>				
FS309D1	<b>C(CM)-UKFS309D1;H2309X</b>	3	80	4.1	5.2
FS309D1	<b>C(CM)-UKFS309AD1;HA2309</b>				
FS309D1	<b>C(CM)-UKFS309ED1;HE2309X</b>	1/8	3 <sup>5</sup> /32	9.0	11
FS309D1	<b>C(CM)-UKFS309SD1;HS2309X</b>				
FS310D1	<b>C(CM)-UKFS310D1;H2310X</b>	3	88	5.3	6.8
FS310D1	<b>C(CM)-UKFS310SD1;HS2310</b>				
FS310D1	<b>C(CM)-UKFS310AD1;HA2310</b>	1/8	3 <sup>15</sup> /32	12	15
FS310D1	<b>C(CM)-UKFS310ED1;HE2310X</b>				
FS311D1	<b>C(CM)-UKFS311D1;H2311X</b>	4	93	6.2	8.3
FS311D1	<b>C(CM)-UKFS311SD1;HS2311</b>				
FS311D1	<b>C(CM)-UKFS311AD1;HA2311</b>	5/32	3 <sup>21</sup> /32	14	18
FS311D1	<b>C(CM)-UKFS311ED1;HE2311XY</b>				
FS312D1	<b>C(CM)-UKFS312D1;H2312X</b>	4	100	7.1	9.0
FS312D1	<b>C(CM)-UKFS312SD1;HS2312</b>	5/32	3 <sup>15</sup> /16	16	20
FS313D1	<b>C(CM)-UKFS313D1;H2313X</b>	4	103	8.7	11
FS313D1	<b>C(CM)-UKFS313AD1;HA2313</b>				
FS313D1	<b>C(CM)-UKFS313ED1;HE2313X</b>	5/32	4 <sup>1</sup> /16	19	24
FS313D1	<b>C(CM)-UKFS313SD1;HS2313X</b>				

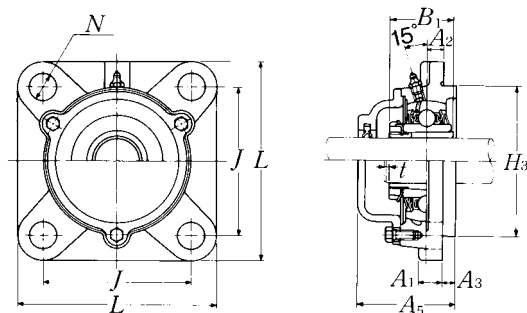
Flanged cartridge units cast housing  
Adapter type



Shaft dia.	Unit number <sup>1) 2) 3)</sup>	Nominal dimensions											Bolt size	Bearing number
		mm					inch							
		L	J	A <sub>2</sub>	N	A <sub>3</sub>	A <sub>1</sub>	A	H <sub>3</sub>	A <sub>0</sub>	B <sub>1</sub>	mm inch		
65 2 <sup>7</sup> / <sub>16</sub> 2 <sup>1</sup> / <sub>2</sub>	UKFS315D1;H2315X UKFS315D1;HA2315 UKFS315D1;HE2315X	236 9 <sup>9</sup> / <sub>32</sub>	184 7 <sup>1</sup> / <sub>4</sub>	21 5 <sup>3</sup> / <sub>64</sub>	25 6 <sup>3</sup> / <sub>64</sub>	18 4 <sup>5</sup> / <sub>64</sub>	25 3 <sup>1</sup> / <sub>32</sub>	66 2 <sup>19</sup> / <sub>32</sub>	200 7.8740	81.5 3 <sup>13</sup> / <sub>64</sub>	73 2.874	M22 7 <sup>7</sup> / <sub>8</sub>	UK315D1;H2315X UK315D1;HA2315 UK315D1;HE2315X	
70 2 <sup>11</sup> / <sub>16</sub> 2 <sup>3</sup> / <sub>4</sub>	UKFS316D1;H2316X UKFS316D1;HA2316 UKFS316D1;HE2316X	250 9 <sup>27</sup> / <sub>32</sub>	196 7 <sup>23</sup> / <sub>32</sub>	18 4 <sup>5</sup> / <sub>64</sub>	31 1 <sup>7</sup> / <sub>32</sub>	20 2 <sup>5</sup> / <sub>32</sub>	27 1 <sup>1</sup> / <sub>16</sub>	68 2 <sup>43</sup> / <sub>64</sub>	210 8.2677	84 3 <sup>5</sup> / <sub>16</sub>	78 3.071	M27 1	UK316D1;H2316X UK316D1;HA2316 UK316D1;HE2316X	
75 2 <sup>15</sup> / <sub>16</sub> 3	UKFS317D1;H2317X UKFS317D1;HA2317X UKFS317D1;HE2317X	260 10 <sup>1</sup> / <sub>4</sub>	204 8 <sup>1</sup> / <sub>32</sub>	24 1 <sup>5</sup> / <sub>16</sub>	31 1 <sup>7</sup> / <sub>32</sub>	20 2 <sup>5</sup> / <sub>32</sub>	27 1 <sup>1</sup> / <sub>16</sub>	74 2 <sup>29</sup> / <sub>32</sub>	220 8.6614	92 3 <sup>5</sup> / <sub>8</sub>	82 3.228	M27 1	UK317D1;H2317X UK317D1;HA2317X UK317D1;HE2317X	
80 3 <sup>3</sup> / <sub>16</sub>	UKFS318D1;H2318X UKFS318D1;HA2318X	280 11 <sup>1</sup> / <sub>32</sub>	216 8 <sup>1</sup> / <sub>2</sub>	24 1 <sup>5</sup> / <sub>16</sub>	35 1 <sup>3</sup> / <sub>8</sub>	20 2 <sup>5</sup> / <sub>32</sub>	30 1 <sup>3</sup> / <sub>16</sub>	76 2 <sup>63</sup> / <sub>64</sub>	240 9.4488	94 3 <sup>45</sup> / <sub>64</sub>	86 3.386	M30 1 <sup>1</sup> / <sub>8</sub>	UK318D1;H2318X UK318D1;HA2318X	
85 3 <sup>1</sup> / <sub>4</sub>	UKFS319D1;H2319X UKFS319D1;HE2319X	290 11 <sup>13</sup> / <sub>32</sub>	228 8 <sup>31</sup> / <sub>32</sub>	39 1 <sup>17</sup> / <sub>32</sub>	35 1 <sup>3</sup> / <sub>8</sub>	20 2 <sup>5</sup> / <sub>32</sub>	30 1 <sup>3</sup> / <sub>16</sub>	94 3 <sup>45</sup> / <sub>64</sub>	250 9.8425	111.5 4 <sup>25</sup> / <sub>64</sub>	90 3.543	M30 1 <sup>1</sup> / <sub>8</sub>	UK319D1;H2319X UK319D1;HE2319X	
90 3 <sup>7</sup> / <sub>16</sub> 3 <sup>1</sup> / <sub>2</sub>	UKFS320D1;H2320X UKFS320D1;HA2320 UKFS320D1;HE2320X	310 12 <sup>7</sup> / <sub>32</sub>	242 9 <sup>17</sup> / <sub>32</sub>	39 1 <sup>17</sup> / <sub>32</sub>	38 1 <sup>1</sup> / <sub>2</sub>	20 2 <sup>5</sup> / <sub>32</sub>	32 1 <sup>1</sup> / <sub>4</sub>	94 3 <sup>45</sup> / <sub>64</sub>	260 10.2362	115.5 4 <sup>35</sup> / <sub>64</sub>	97 3.819	M33 1 <sup>1</sup> / <sub>4</sub>	UK320D1;H2320X UK320D1;HA2320 UK320D1;HE2320X	
100	UKFS322D1;H2322X	340	266	35	41	25	35	96	300	121	105	M36	UK322D1;H2322X	
110	UKFS324D1;H2324X	370	290	35	41	30	40	110	330	130	112	M36	UK324D1;H2324X	
115	UKFS326D1;H2326	410	320	35	41	30	45	115	360	133	121	M36	UK326D1;H2326	
125	UKFS328D1;H2328	450	350	45	41	30	55	125	400	146.5	131	M36	UK328D1;H2328	

- Remarks: 1) These numbers indicate relubricatable type. If maintenance free type is needed, please order without suffix "D1".  
 2) Adapter number with suffix "X" means a narrow slot type adapter sleeve. In this case the lock washer with the straight inner prong should be used.  
 3) For HE2311XY, screw thread pitch different from the standard is applied, because of the thin thread section of sleeve. To distinguish it, a suffix "Y" is added.  
 4) If the inch series housing units with dust cover are ordered with a closed end, the suffixes E, S or A are not included.  
 Example: CM-UKFS305D1; HE2305

Note: Please refer to page 25 for size of grease fitting.



Cast dust cover type  
 Open end: **C-UKFS...D1**  
 Closed end: **CM-UKFS...D1**

Housing number	Unit number <sup>4)</sup> cast dust cover type	Nominal dimensions		Mass of unit	
		mm	inch	kg	lb
		<i>t</i> max.	<i>A<sub>5</sub></i>	UKFS	C(CM)
FS315D1	<b>C(CM)-UKFS315D1;H2315X</b>	4	114	13	16
FS315D1	<b>C(CM)-UKFS315AD1;HA2315</b>	$\frac{5}{32}$	$4\frac{31}{64}$	29	35
FS315D1	<b>C(CM)-UKFS315ED1;HE2315X</b>				
FS316D1	<b>C(CM)-UKFS316D1;H2316X</b>	4	116	15	18
FS316D1	<b>C(CM)-UKFS316AD1;HA2316</b>	$\frac{5}{32}$	$4\frac{9}{16}$	33	40
FS316D1	<b>C(CM)-UKFS316D1;HE2316X</b>				
FS317D1	<b>C(CM)-UKFS317D1;H2317X</b>	5	129	17	22
FS317D1	<b>C(CM)-UKFS317AD1;HA2317X</b>	$\frac{13}{64}$	$5\frac{5}{64}$	37	49
FS317D1	<b>C(CM)-UKFS317ED1;HE2317X</b>				
FS318D1	<b>C(CM)-UKFS318D1;H2318X</b>	5	129	21	26
FS318D1	<b>C(CM)-UKFS318AD1;HA2318X</b>	$\frac{13}{64}$	$5\frac{5}{64}$	46	57
FS319D1	<b>C(CM)-UKFS319D1;H2319X</b>	5	149	25	31
FS319D1	<b>C(CM)-UKFS319ED1;HE2319X</b>	$\frac{13}{64}$	$5\frac{55}{64}$	55	68
FS320D1	<b>C(CM)-UKFS320D1;H2320X</b>	5	154	30	35
FS320D1	<b>C(CM)-UKFS320AD1;HA2320</b>	$\frac{13}{64}$	$6\frac{1}{16}$	66	77
FS320D1	<b>C(CM)-UKFS320ED1;HE2320X</b>				
FS322D1	<b>C(CM)-UKFS322D1;H2322X</b>	5	160	39	48
FS324D1	<b>C(CM)-UKFS324D1;H2324X</b>	5	172	53	63
FS326D1	<b>C(CM)-UKFS326D1;H2326</b>	6	178	61	85
FS328D1	<b>C(CM)-UKFS328D1;H2328</b>	6	192	100	120