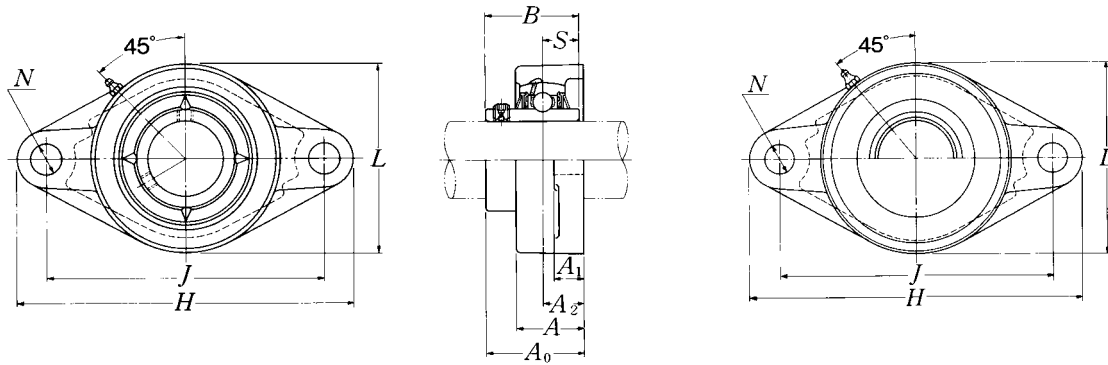


Flanged cartridge units cast housing Set screw type



Pressed steel dust cover type

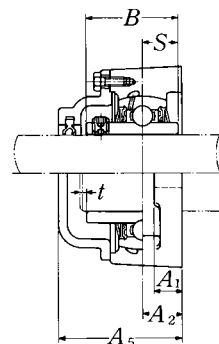
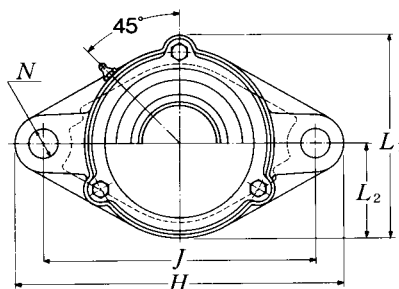
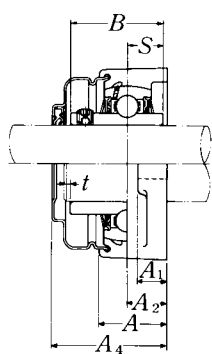
Open end: **S-UCFL...D1**

Closed end: **SM-UCFL...D1**

Shaft dia. mm inch	Unit number ¹⁾	Nominal dimensions										Bolt size mm inch	Bearing number
		H	J	A ₂	A ₁	A	N	L	A ₀	B	S		
12 1/2	UCFL201D1	113	90	15	11	25.5	12	60	33.3	31	12.7	M10	UC201D1
	UCFL201-008D1	4 ⁷ / ₁₆	3 ³⁵ / ₆₄	1 ⁹ / ₃₂	7/16	1	1 ⁵ / ₃₂	2 ³ / ₈	1 ⁵ / ₁₆	1.2205	0.500	3/8	UC201-008D1
15 9/16 5/8	UCFL202D1	113	90	15	11	25.5	12	60	33.3	31	12.7	M10	UC202D1
	UCFL202-009D1	4 ⁷ / ₁₆	3 ³⁵ / ₆₄	1 ⁹ / ₃₂	7/16	1	1 ⁵ / ₃₂	2 ³ / ₈	1 ⁵ / ₁₆	1.2205	0.500	3/8	UC202-009D1
	UCFL202-010D1	4 ⁷ / ₁₆	3 ³⁵ / ₆₄	1 ⁹ / ₃₂	7/16	1	1 ⁵ / ₃₂	2 ³ / ₈	1 ⁵ / ₁₆	1.2205	0.500	3/8	UC202-010D1
17 11/16	UCFL203D1	113	90	15	11	25.5	12	60	33.3	31	12.7	M10	UC203D1
	UCFL203-011D1	4 ⁷ / ₁₆	3 ³⁵ / ₆₄	1 ⁹ / ₃₂	7/16	1	1 ⁵ / ₃₂	2 ³ / ₈	1 ⁵ / ₁₆	1.2205	0.500	3/8	UC203-011D1
20 3/4	UCFL204D1	113	90	15	11	25.5	12	60	33.3	31	12.7	M10	UC204D1
	UCFL204-012D1	4 ⁷ / ₁₆	3 ³⁵ / ₆₄	1 ⁹ / ₃₂	7/16	1	1 ⁵ / ₃₂	2 ³ / ₈	1 ⁵ / ₁₆	1.2205	0.500	3/8	UC204-012D1
25 13/16 7/8 15/16 1	UCFL205D1	130	99	16	13	27	16	68	35.8	34.1	14.3	M14	UC205D1
	UCFL205-013D1												UC205-013D1
	UCFL205-014D1	5 ¹ / ₈	3 ⁵⁷ / ₆₄	5/8	1/2	1 ¹ / ₁₆	5/8	2 ¹¹ / ₁₆	1 ¹³ / ₃₂	1.3425	0.563	1/2	UC205-014D1
	UCFL205-015D1												UC205-015D1
	UCFL205-100D1												UC205-100D1
30 1 1/16 1 1/8 1 3/16 1 1/4	UCFL206D1	148	117	18	13	31	16	80	40.2	38.1	15.9	M14	UC206D1
	UCFL206-101D1												UC206-101D1
	UCFL206-102D1	5 ¹³ / ₁₆	4 ³⁹ / ₆₄	4 ⁵ / ₆₄	1/2	1 ⁷ / ₃₂	5/8	3 ⁵ / ₃₂	1 ³⁷ / ₆₄	1.5000	0.626	1/2	UC206-102D1
	UCFL206-103D1												UC206-103D1
	UCFL206-104D1												UC206-104D1
35 1 1/4 1 5/16 1 3/8 1 7/16	UCFL207D1	161	130	19	15	34	16	90	44.4	42.9	17.5	M14	UC207D1
	UCFL207-104D1												UC207-104D1
	UCFL207-105D1	6 ¹¹ / ₃₂	5 ¹ / ₈	3/4	1 ⁹ / ₃₂	1 ¹¹ / ₃₂	5/8	3 ¹⁷ / ₃₂	1 ³ / ₄	1.6890	0.689	1/2	UC207-105D1
	UCFL207-106D1												UC207-106D1
	UCFL207-107D1												UC207-107D1
40 1 1/2 1 9/16	UCFL208D1	175	144	21	15	36	16	100	51.2	49.2	19	M14	UC208D1
	UCFL208-108D1	6 ⁷ / ₈	5 ⁴³ / ₆₄	5 ³ / ₆₄	1 ⁹ / ₃₂	1 ¹³ / ₃₂	5/8	3 ¹⁵ / ₁₆	2 ¹ / ₆₄	1.9370	0.748	1/2	UC208-108D1
	UCFL208-109D1												UC208-109D1
45 1 5/8 1 11/16 1 3/4	UCFL209D1	188	148	22	16	38	19	108	52.2	49.2	19	M16	UC209D1
	UCFL209-110D1												UC209-110D1
	UCFL209-111D1	7 ¹³ / ₃₂	5 ⁵³ / ₆₄	5 ⁵ / ₆₄	5/8	1 ¹ / ₂	3/4	4 ¹ / ₄	2 ¹ / ₁₆	1.9370	0.748	5/8	UC209-111D1
	UCFL209-112D1												UC209-112D1

Remarks: 1) These numbers indicate relubricatable type. If maintenance free type is needed, please order without suffix "D1".

Note: Please refer to page 25 for size of grease fitting.



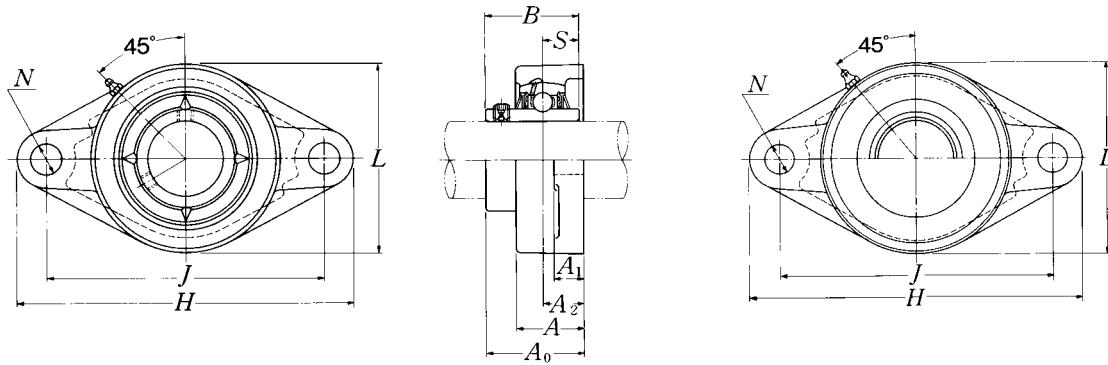
Cast dust cover type

Open end: **C-UCFL...D1**

Closed end: **CM-UCFL...D1**

Housing number	Unit number pressed steel dust cover type	Unit number cast dust cover type	Nominal dimensions					Mass of unit		
			t max.	mm		inch		kg		lb
				A ₄	A ₅	L ₁	L ₂	UCFL	S(SM)	C(CM)
FL204D1	S(SM)-UCFL201D1	C(CM)-UCFL201D1	2	40.5	46	67	30	0.6	0.6	0.8
FL204D1	S(SM)-UCFL201-008D1	C(CM)-UCFL201-008D1	$\frac{5}{64}$	$1\frac{19}{32}$	$1\frac{13}{16}$	$2\frac{5}{8}$	$1\frac{3}{16}$	1.3	1.3	0.8
FL204D1	S(SM)-UCFL202D1	C(CM)-UCFL202D1	2	40.5	46	67	30	0.6	0.6	0.8
FL204D1	S(SM)-UCFL202-009D1	C(CM)-UCFL202-009D1	$\frac{5}{64}$	$1\frac{19}{32}$	$1\frac{13}{16}$	$2\frac{5}{8}$	$1\frac{3}{16}$	1.3	1.3	1.8
FL204D1	S(SM)-UCFL202-010D1	C(CM)-UCFL202-009D1	$\frac{5}{64}$	$1\frac{19}{32}$	$1\frac{13}{16}$	$2\frac{5}{8}$	$1\frac{3}{16}$	1.3	1.3	1.8
FL204D1	S(SM)-UCFL203D1	C(CM)-UCFL203D1	2	40.5	46	67	30	0.5	0.6	0.8
FL204D1	S(SM)-UCFL203-011D1	C(CM)-UCFL203-011D1	$\frac{5}{64}$	$1\frac{19}{32}$	$1\frac{13}{32}$	$2\frac{5}{8}$	$1\frac{3}{16}$	1.1	1.3	1.8
FL204D1	S(SM)-UCFL204D1	C(CM)-UCFL204D1	2	40.5	46	67	30	0.5	0.6	0.8
FL204D1	S(SM)-UCFL204-012D1	C(CM)-UCFL204-012D1	$\frac{5}{64}$	$1\frac{19}{32}$	$1\frac{13}{16}$	$2\frac{5}{8}$	$1\frac{3}{16}$	1.1	1.3	1.8
FL205D1	S(SM)-UCFL205D1	C(CM)-UCFL205D1	2	44.5	51	74	34	0.6	0.7	0.9
FL205D1	S(SM)-UCFL205-013D1	C(CM)-UCFL205-013D1	$\frac{5}{64}$	$1\frac{3}{4}$	2	$2\frac{29}{32}$	$1\frac{11}{32}$	1.3	1.5	2.0
FL205D1	S(SM)-UCFL205-014D1	C(CM)-UCFL205-014D1	$\frac{5}{64}$	$1\frac{3}{4}$	2	$2\frac{29}{32}$	$1\frac{11}{32}$	1.3	1.5	2.0
FL205D1	S(SM)-UCFL205-015D1	C(CM)-UCFL205-015D1	$\frac{5}{64}$	$1\frac{3}{4}$	2	$2\frac{29}{32}$	$1\frac{11}{32}$	1.3	1.5	2.0
FL205D1	S(SM)-UCFL205-100D1	C(CM)-UCFL205-100D1	$\frac{5}{64}$	$1\frac{3}{4}$	2	$2\frac{29}{32}$	$1\frac{11}{32}$	1.3	1.5	2.0
FL206D1	S(SM)-UCFL206D1	C(CM)-UCFL206D1	2	49	56	85	40	0.9	1.0	1.2
FL206D1	S(SM)-UCFL206-101D1	C(CM)-UCFL206-101D1	$\frac{5}{64}$	$1\frac{15}{16}$	$2\frac{7}{32}$	$3\frac{11}{32}$	$1\frac{9}{16}$	2.0	2.2	2.6
FL206D1	S(SM)-UCFL206-102D1	C(CM)-UCFL206-102D1	$\frac{5}{64}$	$1\frac{15}{16}$	$2\frac{7}{32}$	$3\frac{11}{32}$	$1\frac{9}{16}$	2.0	2.2	2.6
FL206D1	S(SM)-UCFL206-103D1	C(CM)-UCFL206-103D1	$\frac{5}{64}$	$1\frac{15}{16}$	$2\frac{7}{32}$	$3\frac{11}{32}$	$1\frac{9}{16}$	2.0	2.2	2.6
FL206D1	—	—	—	—	—	—	—	—	—	—
FL207D1	S(SM)-UCFL207D1	C(CM)-UCFL207D1	3	55	59	97	45	1.2	1.2	1.8
FL207D1	S(SM)-UCFL207-104D1	C(CM)-UCFL207-104D1	$\frac{1}{8}$	$2\frac{5}{32}$	$2\frac{5}{16}$	$3\frac{13}{16}$	$1\frac{25}{32}$	2.6	2.6	4.0
FL207D1	S(SM)-UCFL207-105D1	C(CM)-UCFL207-105D1	$\frac{1}{8}$	$2\frac{5}{32}$	$2\frac{5}{16}$	$3\frac{13}{16}$	$1\frac{25}{32}$	2.6	2.6	4.0
FL207D1	S(SM)-UCFL207-106D1	C(CM)-UCFL207-106D1	$\frac{1}{8}$	$2\frac{5}{32}$	$2\frac{5}{16}$	$3\frac{13}{16}$	$1\frac{25}{32}$	2.6	2.6	4.0
FL207D1	—	—	—	—	—	—	—	—	—	—
FL208D1	S(SM)-UCFL208D1	C(CM)-UCFL208D1	3	62	66	106	50	1.6	1.6	2.2
FL208D1	S(SM)-UCFL208-108D1	C(CM)-UCFL208-108D1	$\frac{1}{8}$	$2\frac{7}{16}$	$2\frac{19}{32}$	$4\frac{3}{16}$	$1\frac{31}{32}$	3.5	3.5	4.9
FL208D1	S(SM)-UCFL208-109D1	C(CM)-UCFL208-109D1	$\frac{1}{8}$	$2\frac{7}{16}$	$2\frac{19}{32}$	$4\frac{3}{16}$	$1\frac{31}{32}$	3.5	3.5	4.9
FL209D1	S(SM)-UCFL209D1	C(CM)-UCFL209D1	3	63	70	113	54	1.9	2.0	2.5
FL209D1	S(SM)-UCFL209-110D1	C(CM)-UCFL209-110D1	$\frac{1}{8}$	$2\frac{15}{32}$	$2\frac{3}{4}$	$4\frac{7}{16}$	$2\frac{1}{8}$	4.2	4.4	5.5
FL209D1	S(SM)-UCFL209-111D1	C(CM)-UCFL209-111D1	$\frac{1}{8}$	$2\frac{15}{32}$	$2\frac{3}{4}$	$4\frac{7}{16}$	$2\frac{1}{8}$	4.2	4.4	5.5
FL209D1	S(SM)-UCFL209-112D1	C(CM)-UCFL209-112D1	$\frac{1}{8}$	$2\frac{15}{32}$	$2\frac{3}{4}$	$4\frac{7}{16}$	$2\frac{1}{8}$	4.2	4.4	5.5

Flanged cartridge units cast housing Set screw type



Pressed steel dust cover type

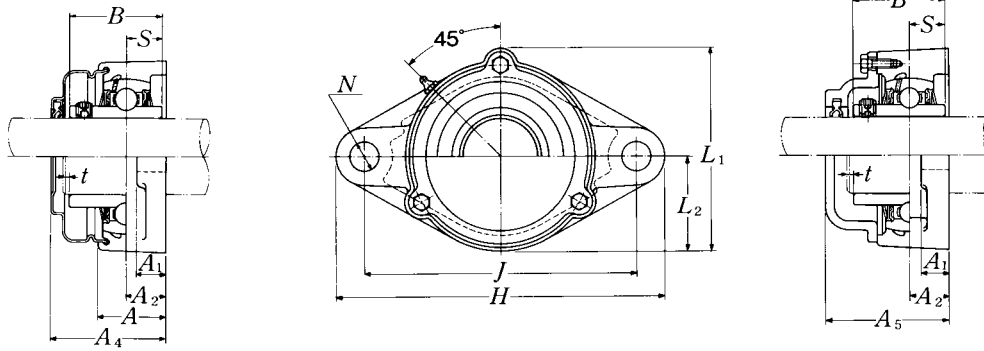
Open end: **S-UCFL...D1**

Closed end: **SM-UCFL...D1**

Shaft dia.	Unit number ¹⁾	Nominal dimensions										Bolt size	Bearing number
		mm					inch						
mm inch		H	J	A ₂	A ₁	A	N	L	A ₀	B	S	mm inch	
50	UCFL210D1	197	157	22	16	40	19	115	54.6	51.6	19	M16	UC210D1
$1\frac{13}{16}$	UCFL210-113D1												UC210-113D1
$1\frac{7}{8}$	UCFL210-114D1												UC210-114D1
$1\frac{15}{16}$	UCFL210-115D1												UC210-115D1
2	UCFL210-200D1												UC210-200D1
55	UCFL211D1	224	184	25	18	43	19	130	58.4	55.6	22.2	M16	UC211D1
2	UCFL211-200D1												UC211-200D1
$2\frac{1}{16}$	UCFL211-201D1												UC211-201D1
$2\frac{1}{8}$	UCFL211-202D1												UC211-202D1
$2\frac{3}{16}$	UCFL211-203D1												UC211-203D1
60	UCFL212D1	250	202	29	18	48	23	140	68.7	65.1	25.4	M20	UC212D1
$2\frac{1}{4}$	UCFL212-204D1												UC212-204D1
$2\frac{5}{16}$	UCFL212-205D1												UC212-205D1
$2\frac{3}{8}$	UCFL212-206D1												UC212-206D1
$2\frac{7}{16}$	UCFL212-207D1												UC212-207D1
65	UCFL213D1	258	210	30	22	50	23	155	69.7	65.1	25.4	M20	UC213D1
$2\frac{1}{2}$	UCFL213-208D1												UC213-208D1
$2\frac{9}{16}$	UCFL213-209D1												UC213-209D1
70	UCFL214D1	265	216	31	22	54	23	160	75.4	74.6	30.2	M20	UC214D1
$2\frac{5}{8}$	UCFL214-210D1												UC214-210D1
$2\frac{11}{16}$	UCFL214-211D1												UC214-211D1
$2\frac{3}{4}$	UCFL214-212D1												UC214-212D1
75	UCFL215D1	275	225	34	22	56	23	165	78.5	77.8	33.3	M20	UC215D1
$2\frac{13}{16}$	UCFL215-213D1												UC215-213D1
$2\frac{7}{8}$	UCFL215-214D1												UC215-214D1
$2\frac{15}{16}$	UCFL215-215D1												UC215-215D1
3	UCFL215-300D1												UC215-300D1
80	UCFL216D1	290	233	34	22	58	25	180	83.3	82.6	33.3	M22	UC216D1
$3\frac{1}{16}$	UCFL216-301D1												UC216-301D1
$3\frac{1}{8}$	UCFL216-302D1												UC216-302D1
$3\frac{3}{16}$	UCFL216-303D1												UC216-303D1

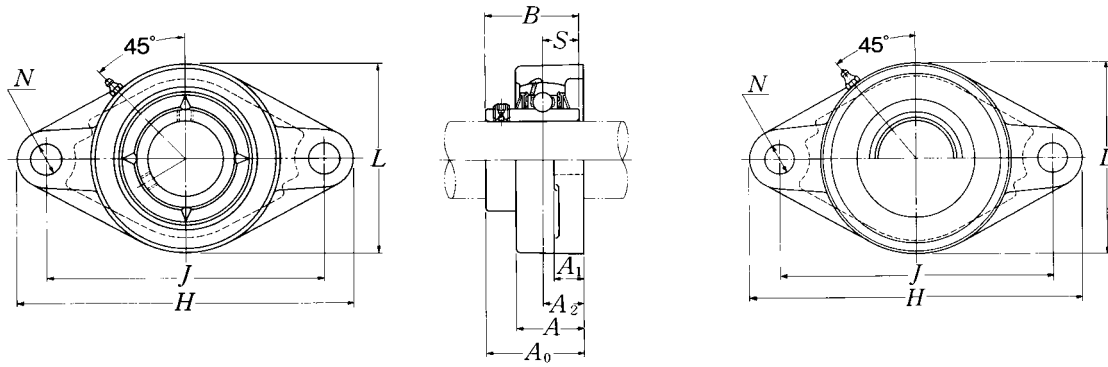
Remarks: 1) These numbers indicate relubricatable type. If maintenance free type is needed, please order without suffix "D1".

Note: Please refer to page 25 for size of grease fitting.

**Cast dust cover type**Open end: **C-UCFL...D1**Closed end: **CM-UCFL...D1**

Housing number	Unit number pressed steel dust cover type	Unit number cast dust cover type	Nominal dimensions					Mass of unit		
			t max.	mm	inch	L ₁	L ₂	UCFL	S(SM)	C(CM)
				A ₄	A ₅					
FL210D1	S(SM)-UCFL210D1	C(CM)-UCFL210D1	3	65.5	72	120	58	2.2	2.3	3.0
FL210D1	S(SM)-UCFL210-113D1	C(CM)-UCFL210-113D1								
FL210D1	S(SM)-UCFL210-114D1	C(CM)-UCFL210-114D1	1/8	2 ¹⁹ / ₃₂	2 ²⁷ / ₃₂	4 ²³ / ₃₂	2 ⁹ / ₃₂	4.9	5.1	6.6
FL210D1	S(SM)-UCFL210-115D1	C(CM)-UCFL210-115D1								
FL210D1	—	—								
FL211D1	S(SM)-UCFL211D1	C(CM)-UCFL211D1	4	71	75	133	65	3.1	3.2	4.3
FL211D1	S(SM)-UCFL211-200D1	C(CM)-UCFL211-200D1								
FL211D1	S(SM)-UCFL211-201D1	C(CM)-UCFL211-201D1	5/32	2 ²⁵ / ₃₂	2 ¹⁵ / ₁₆	5 ¹ / ₄	2 ⁹ / ₁₆	6.8	7.1	9.5
FL211D1	S(SM)-UCFL211-202D1	C(CM)-UCFL211-202D1								
FL211D1	S(SM)-UCFL211-203D1	C(CM)-UCFL211-203D1								
FL212D1	S(SM)-UCFL212D1	C(CM)-UCFL212D1	4	80	86	144	70	4.0	4.2	5.1
FL212D1	S(SM)-UCFL212-204D1	C(CM)-UCFL212-204D1								
FL212D1	S(SM)-UCFL212-205D1	C(CM)-UCFL212-205D1	5/32	3 ⁵ / ₃₂	3 ³ / ₈	5 ²¹ / ₃₂	2 ³ / ₄	8.8	9.3	11
FL212D1	S(SM)-UCFL212-206D1	C(CM)-UCFL212-206D1								
FL212D1	—	—								
FL213D1	S(SM)-UCFL213D1	C(CM)-UCFL213D1	4	83.5	90	157	78	5.0	5.2	6.6
FL213D1	S(SM)-UCFL213-208D1	C(CM)-UCFL213-208D1	5/32	3 ⁹ / ₃₂	3 ¹⁷ / ₃₂	6 ³ / ₁₆	3 ¹ / ₁₆	11	11	15
FL213D1	S(SM)-UCFL213-209D1	C(CM)-UCFL213-209D1								
FL214D1	—	C(CM)-UCFL214D1	4	—	98	164	80	5.6	—	7.3
FL214D1		C(CM)-UCFL214-210D1								
FL214D1	—	C(CM)-UCFL214-211D1	5/32	—	3 ²⁷ / ₃₂	6 ¹⁵ / ₃₂	3 ⁵ / ₃₂	12	—	16
FL214D1		C(CM)-UCFL214-212D1								
FL215D1	—	C(CM)-UCFL215D1	4	—	102	169	82	6.2	—	7.8
FL215D1		C(CM)-UCFL215-213D1								
FL215D1	—	C(CM)-UCFL215-214D1	5/32	—	4 ¹ / ₃₂	6 ²¹ / ₃₂	3 ⁷ / ₃₂	14	—	17
FL215D1		C(CM)-UCFL215-215D1								
FL215D1		C(CM)-UCFL215-300D1								
FL216D1	—	C(CM)-UCFL216D1	4	—	106	183	90	8.2	—	11
FL216D1		C(CM)-UCFL216-301D1								
FL216D1	—	C(CM)-UCFL216-302D1	5/32	—	4 ³ / ₁₆	7 ⁷ / ₃₂	3 ¹⁷ / ₃₂	18	—	24
FL216D1		C(CM)-UCFL216-303D1								

Flanged cartridge units cast housing Set screw type



Pressed steel dust cover type

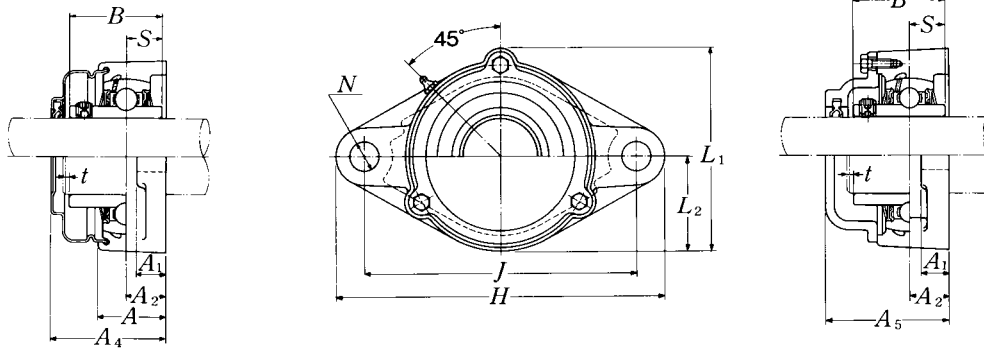
Open end: **S-UCFL...D1**

Closed end: **SM-UCFL...D1**

Shaft dia.	Unit number ¹⁾	Nominal dimensions										Bolt size	Bearing number
		mm					inch						
mm inch		H	J	A ₂	A ₁	A	N	L	A ₀	B	S	mm inch	
85	UCFL217D1	305	248	36	24	63	25	190	87.6	85.7	34.1	M22	UC217D1
3¹/₄	UCFL217-304D1												UC217-304D1
3⁵/₁₆	UCFL217-305D1	12	9⁴⁹/₆₄	1²⁷/₆₄	1⁵/₁₆	2¹⁵/₃₂	6³/₆₄	7¹⁵/₃₂	3²⁹/₆₄	3.3740	1.343	7/8	UC217-305D1
3⁷/₁₆	UCFL217-307D1												UC217-307D1
90	UCFL218D1	320	265	40	24	68	25	205	96.3	96	39.7	M22	UC218D1
3¹/₂	UCFL218-308D1	12¹⁹/₃₂	10⁷/₁₆	1³⁷/₆₄	1⁵/₁₆	2¹¹/₁₆	6³/₆₄	8¹/₁₆	3⁵¹/₆₄	3.7795	1.563	7/8	UC218-308D1

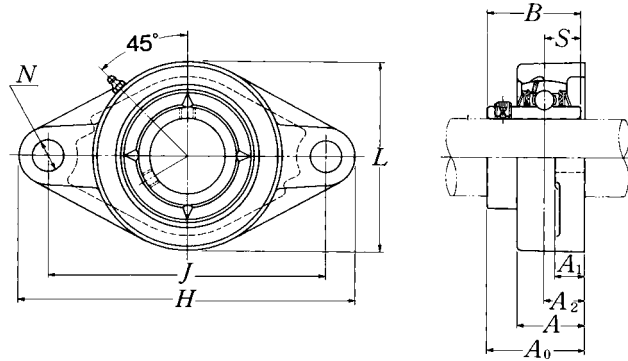
Remarks: 1) These numbers indicate relubricatable type. If maintenance free type is needed, please order without suffix "D1".

Note: Please refer to page 25 for size of grease fitting.

**Cast dust cover type**Open end: **C-UCFL...D1**Closed end: **CM-UCFL...D1**

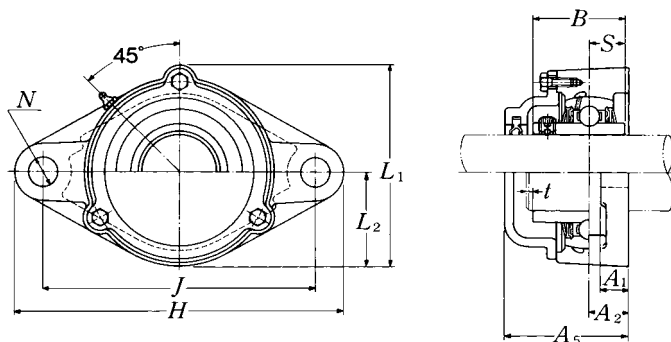
Housing number	Unit number pressed steel dust cover type	Unit number cast dust cover type	Nominal dimensions					Mass of unit		
			mm		inch			kg		lb
			t max.	A_4	A_5	L_1	L_2	UCFL	S(SM)	C(CM)
FL217D1	—	C(CM)-UCFL217D1	5	—	114	192	95	9.3	—	11
FL217D1	—	C(CM)-UCFL217-304D1								
FL217D1	—	C(CM)-UCFL217-305D1	$13/64$	—	$4\frac{1}{2}$	$7\frac{9}{16}$	$3\frac{3}{4}$	21	—	24
FL217D1	—	C(CM)-UCFL217-307D1								
FL218D1	—	C(CM)-UCFL218D1	5	—	122	205	102	11	—	14
FL218D1	—	C(CM)-UCFL218-308D1	$13/64$	—	$4\frac{13}{16}$	$8\frac{1}{16}$	$4\frac{1}{32}$	24	—	31

Flanged cartridge units cast housing Set screw type



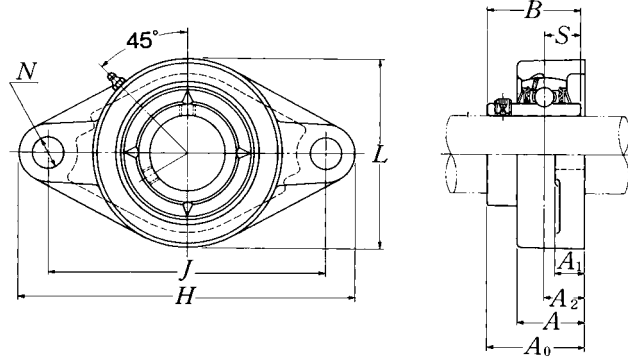
Shaft dia. mm inch	Unit number ¹⁾	Nominal dimensions										Bolt size mm inch	Bearing number
		H	J	A ₂	A ₁	A	N	L	A ₀	B	S		
25 13/16 7/8 15/16 1	UCFL305D1 UCFL305-013D1 UCFL305-014D1 UCFL305-015D1 UCFL305-100D1	150	113	16	13	29	19	80	39	38	15	M16	UC305D1 UC305-013D1 UC305-014D1 UC305-015D1 UC305-100D1
30 1 1/16 1 1/8 1 3/16	UCFL306D1 UCFL306-101D1 UCFL306-102D1 UCFL306-103D1	180	134	18	15	32	23	90	44	43	17	M20	UC306D1 UC306-101D1 UC306-102D1 UC306-103D1
35 1 1/4 1 5/16 1 3/8 1 7/16	UCFL307D1 UCFL307-104D1 UCFL307-105D1 UCFL307-106D1 UCFL307-107D1	185	141	20	16	36	23	100	49	48	19	M20	UC307D1 UC307-104D1 UC307-105D1 UC307-106D1 UC307-107D1
40 1 1/2 1 9/16	UCFL308D1 UCFL308-108D1 UCFL308-109D1	200	158	23	17	40	23	112	56	52	19	M20	UC308D1 UC308-108D1 UC308-109D1
45 1 5/8 1 11/16 1 3/4	UCFL309D1 UCFL309-110D1 UCFL309-111D1 UCFL309-112D1	230	177	25	18	44	25	125	60	57	22	M22	UC309D1 UC309-110D1 UC309-111D1 UC309-112D1
50 1 13/16 1 7/8 1 15/16	UCFL310D1 UCFL310-113D1 UCFL310-114D1 UCFL310-115D1	240	187	28	19	48	25	140	67	61	22	M22	UC310D1 UC310-113D1 UC310-114D1 UC310-115D1
55 2 2 1/16 2 1/8 2 3/16	UCFL311D1 UCFL311-200D1 UCFL311-201D1 UCFL311-202D1 UCFL311-203D1	250	198	30	20	52	25	150	71	66	25	M22	UC311D1 UC311-200D1 UC311-201D1 UC311-202D1 UC311-203D1

Remarks: 1) These numbers indicate relubricatable type. If maintenance free type is needed, please order without suffix "D1".
Note: Please refer to page 25 for size of grease fitting.

**Cast dust cover type**Open end: **C-UCFL...D1**Closed end: **CM-UCFL...D1**

Housing number	Unit number cast dust cover type	Nominal dimensions				Mass of unit	
		mm		inch		kg	lb
		t max.	A ₅	L ₁	L ₂	UCFL	C(CM)
FL305D1	C(CM)-UCFL305D1	2	56	86	40	1.1	1.5
FL305D1	C(CM)-UCFL305-013D1						
FL305D1	C(CM)-UCFL305-014D1	$\frac{5}{64}$	$2\frac{7}{32}$	$3\frac{3}{8}$	$1\frac{9}{16}$	2.4	3.3
FL305D1	C(CM)-UCFL305-015D1						
FL305D1	C(CM)-UCFL305-100D1						
FL306D1	C(CM)-UCFL306D1	2	60	101	45	1.5	1.9
FL306D1	C(CM)-UCFL306-101D1						
FL306D1	C(CM)-UCFL306-102D1	$\frac{5}{64}$	$2\frac{3}{8}$	$3\frac{31}{32}$	$1\frac{25}{32}$	3.3	4.2
FL306D1	C(CM)-UCFL306-103D1						
FL307D1	C(CM)-UCFL307D1	3	68	110	50	1.9	2.3
FL307D1	C(CM)-UCFL307-104D1						
FL307D1	C(CM)-UCFL307-105D1	$\frac{1}{8}$	$2\frac{11}{16}$	$4\frac{11}{32}$	$1\frac{31}{32}$	4.2	5.1
FL307D1	C(CM)-UCFL307-106D1						
FL307D1	C(CM)-UCFL307-107D1						
FL308D1	C(CM)-UCFL308D1	3	76	122	56	2.5	3.3
FL308D1	C(CM)-UCFL308-108D1	$\frac{1}{8}$	3	$4\frac{13}{16}$	$2\frac{7}{32}$	5.5	7.3
FL308D1	C(CM)-UCFL308-109D1						
FL309D1	C(CM)-UCFL309D1	3	80	135	62	3.4	4.2
FL309D1	C(CM)-UCFL309-110D1						
FL309D1	C(CM)-UCFL309-111D1	$\frac{1}{8}$	$3\frac{5}{32}$	$5\frac{5}{16}$	$2\frac{7}{16}$	7.5	9.3
FL309D1	C(CM)-UCFL309-112D1						
FL310D1	C(CM)-UCFL310D1	3	88	152	70	4.4	5.3
FL310D1	C(CM)-UCFL310-113D1						
FL310D1	C(CM)-UCFL310-114D1	$\frac{1}{8}$	$3\frac{15}{32}$	$5\frac{31}{32}$	$2\frac{3}{4}$	9.7	12
FL310D1	C(CM)-UCFL310-115D1						
FL311D1	C(CM)-UCFL311D1	4	92	162	75	5.1	6.2
FL311D1	C(CM)-UCFL311-200D1						
FL311D1	C(CM)-UCFL311-201D1	$\frac{5}{32}$	$3\frac{5}{8}$	$6\frac{3}{8}$	$2\frac{15}{16}$	11	14
FL311D1	C(CM)-UCFL311-202D1						
FL311D1	C(CM)-UCFL311-203D1						

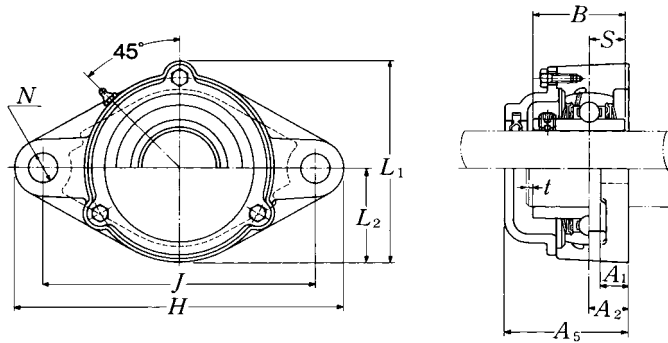
Flanged units cast housing
Set screw type



Shaft dia. mm inch	Unit number ¹⁾	Nominal dimensions										Bolt size mm inch	Bearing number
		H	J	A ₂	A ₁	A	N	L	A ₀	B	S		
60 2 ¹ / ₄	UCFL312D1	270	212	33	22	56	31	160	78	71	26	M27	UC312D1
2 ⁵ / ₁₆	UCFL312-204D1											1	UC312-204D1
2 ³ / ₈	UCFL312-205D1	10 ⁵ / ₈	8 ¹¹ / ₃₂	1 ¹⁹ / ₆₄	7/8	2 ⁷ / ₃₂	1 ⁷ / ₃₂	6 ⁵ / ₁₆	3 ⁵ / ₆₄	2.7953	1.024		UC312-205D1
2 ⁷ / ₁₆	UCFL312-206D1												UC312-206D1
	UCFL312-207D1												UC312-207D1
65 2 ¹ / ₂	UCFL313D1	295	240	33	25	58	31	175	78	75	30	M27	UC313D1
2 ⁹ / ₁₆	UCFL313-208D1											1	UC313-208D1
	UCFL313-209D1	11 ⁵ / ₈	9 ²⁹ / ₆₄	1 ¹⁹ / ₆₄	3 ¹ / ₃₂	2 ⁹ / ₃₂	1 ⁷ / ₃₂	6 ⁷ / ₈	3 ⁵ / ₆₄	2.9528	1.181		UC313-209D1
70 2 ⁵ / ₈	UCFL314D1	315	250	36	28	61	35	185	81	78	33	M30	UC314D1
2 ¹¹ / ₁₆	UCFL314-210D1											1 ¹ / ₈	UC314-210D1
2 ³ / ₄	UCFL314-211D1	12 ¹³ / ₃₂	9 ²⁷ / ₃₂	1 ²⁷ / ₆₄	1 ³ / ₃₂	2 ¹³ / ₃₂	1 ³ / ₈	7 ⁹ / ₃₂	3 ³ / ₁₆	3.0709	1.299		UC314-211D1
	UCFL314-212D1												UC314-212D1
75 2 ¹³ / ₁₆	UCFL315D1	320	260	39	30	66	35	195	89	82	32	M30	UC315D1
2 ⁷ / ₈	UCFL315-213D1											1 ¹ / ₈	UC315-213D1
2 ¹⁵ / ₁₆	UCFL315-214D1	12 ¹⁹ / ₃₂	10 ¹⁵ / ₆₄	1 ¹⁷ / ₃₂	1 ³ / ₁₆	2 ¹⁹ / ₃₂	1 ³ / ₈	7 ¹¹ / ₁₆	3 ¹ / ₂	3.2283	1.260		UC315-214D1
3	UCFL315-215D1												UC315-215D1
	UCFL315-300D1												UC315-300D1
80 3 ¹ / ₁₆	UCFL316D1	355	285	38	32	68	38	210	90	86	34	M33	UC316D1
3 ¹ / ₈	UCFL316-301D1											1 ¹ / ₄	UC316-301D1
3 ³ / ₁₆	UCFL316-302D1	13 ³¹ / ₃₂	11 ⁷ / ₃₂	1 ¹ / ₂	1 ¹ / ₄	2 ¹¹ / ₁₆	1 ¹ / ₂	8 ⁹ / ₃₂	3 ³⁵ / ₆₄	3.3858	1.339		UC316-302D1
	UCFL316-303D1												UC316-303D1
85 3 ¹ / ₄	UCFL317D1	370	300	44	32	74	38	220	100	96	40	M33	UC317D1
3 ⁵ / ₁₆	UCFL317-304D1											1 ¹ / ₄	UC317-304D1
3 ⁷ / ₁₆	UCFL317-305D1	14 ⁹ / ₁₆	11 ¹³ / ₁₆	1 ⁴⁷ / ₆₄	1 ¹ / ₄	2 ²⁹ / ₃₂	1 ¹ / ₂	8 ²¹ / ₃₂	3 ¹⁵ / ₁₆	3.7795	1.575		UC317-305D1
	UCFL317-307D1												UC317-307D1
90 3 ⁷ / ₁₆	UCFL318D1	385	315	44	36	76	38	235	100	96	40	M33	UC318D1
3 ¹ / ₂	UCFL318-307D1											1 ¹ / ₄	UC318-307D1
	UCFL318-308D1	15 ⁵ / ₃₂	12 ¹³ / ₃₂	1 ⁴⁷ / ₆₄	1 ¹³ / ₃₂	3	1 ¹ / ₂	9 ¹ / ₄	3 ¹⁵ / ₁₆	3.7795	1.575		UC318-308D1

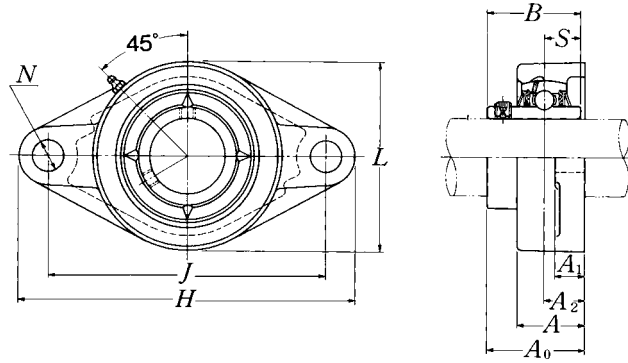
Remarks: 1) These numbers indicate relubricatable type. If maintenance free type is needed, please order without suffix "D1".

Note: Please refer to page 25 for size of grease fitting.

**Cast dust cover type**Open end: **C-UCFL...D1**Closed end: **CM-UCFL...D1**

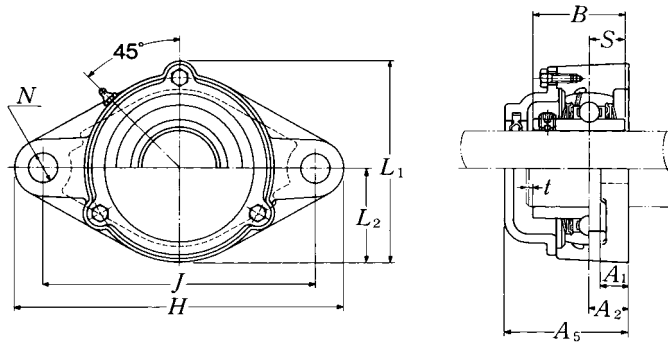
Housing number	Unit number cast dust cover type	Nominal dimensions				Mass of unit	
		mm		inch		kg	lb
		<i>t</i> max.	<i>A</i> ₅	<i>L</i> ₁	<i>L</i> ₂	UCFL	C(CM)
FL312D1	C(CM)-UCFL312D1	4	100	175	80	6.1	7.7
FL312D1	C(CM)-UCFL312-204D1						
FL312D1	C(CM)-UCFL312-205D1	$\frac{5}{32}$	$3\frac{15}{16}$	$6\frac{7}{8}$	$3\frac{5}{32}$	13	17
FL312D1	C(CM)-UCFL312-206D1						
FL312D1	C(CM)-UCFL312-207D1						
FL313D1	C(CM)-UCFL313D1	4	103	189	88	7.8	9.9
FL313D1	C(CM)-UCFL313-208D1	$\frac{5}{32}$	$4\frac{1}{16}$	$7\frac{7}{16}$	$3\frac{15}{32}$	17	22
FL313D1	C(CM)-UCFL313-209D1						
FL314D1	C(CM)-UCFL314D1	4	106	198	92	9.0	12
FL314D1	C(CM)-UCFL314-210D1						
FL314D1	C(CM)-UCFL314-211D1	$\frac{5}{32}$	$4\frac{3}{16}$	$7\frac{25}{32}$	$3\frac{5}{8}$	20	26
FL314D1	C(CM)-UCFL314-212D1						
FL315D1	C(CM)-UCFL315D1	4	114	210	98	10	12
FL315D1	C(CM)-UCFL315-213D1						
FL315D1	C(CM)-UCFL315-214D1	$\frac{5}{32}$	$4\frac{1}{2}$	$8\frac{9}{32}$	$3\frac{27}{32}$	22	26
FL315D1	C(CM)-UCFL315-215D1						
FL315D1	C(CM)-UCFL315-300D1						
FL316D1	C(CM)-UCFL316D1	4	116	222	105	13	16
FL316D1	C(CM)-UCFL316-301D1						
FL316D1	C(CM)-UCFL316-302D1	$\frac{5}{32}$	$4\frac{9}{16}$	$8\frac{3}{4}$	$4\frac{1}{8}$	29	35
FL316D1	C(CM)-UCFL316-303D1						
FL317D1	C(CM)-UCFL317D1	5	127	234	110	15	18
FL317D1	C(CM)-UCFL317-304D1						
FL317D1	C(CM)-UCFL317-305D1	$\frac{13}{64}$	5	$9\frac{7}{32}$	$4\frac{11}{32}$	33	40
FL317D1	C(CM)-UCFL317-307D1						
FL318D1	C(CM)-UCFL318D1	5	129	247	118	18	21
FL318D1	C(CM)-UCFL318-307D1	$\frac{13}{64}$	$5\frac{3}{32}$	$9\frac{23}{32}$	$4\frac{21}{32}$	40	46
FL318D1	C(CM)-UCFL318-308D1						

Flanged units cast housing Set screw type



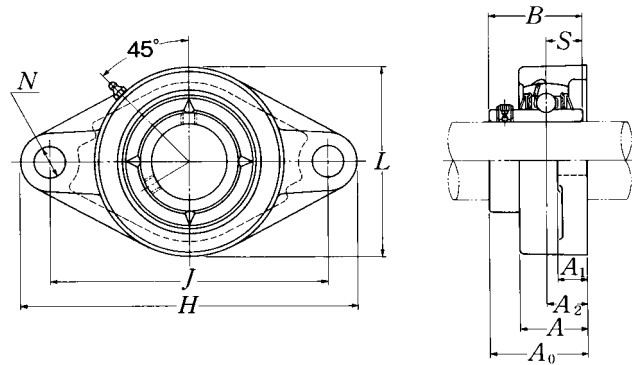
Shaft dia. mm inch	Unit number ¹⁾	Nominal dimensions											Bolt size mm inch	Bearing number
		H	J	A ₂	A ₁	A	N	L	A ₀	B	S			
95 3 ⁵ / ₈	UCFL319D1 UCFL319-310D1	405	330	59	40	94	41	250	121	103	41	M36	UC319D1 UC319-310D1	
3¹¹/₁₆ 3³/₄	UCFL319-311D1 UCFL319-312D1	15 ¹⁵ / ₁₆	12 ⁶³ / ₆₄	2 ²¹ / ₆₄	1 ⁹ / ₁₆	3 ¹¹ / ₁₆	1 ³⁹ / ₆₄	9 ²⁷ / ₃₂	4 ⁴⁹ / ₆₄	4.0551	1.614	1 ³ / ₈	UC319-311D1 UC319-312D1	
100 3 ¹³ / ₁₆	UCFL320D1 UCFL320-313D1	440	360	59	40	94	44	270	125	108	42	M39	UC320D1 UC320-313D1	
3⁷/₈ 3¹⁵/₁₆ 4	UCFL320-314D1 UCFL320-315D1 UCFL320-400D1	17 ⁵ / ₁₆	14 ¹¹ / ₆₄	2 ²¹ / ₆₄	1 ⁹ / ₁₆	3 ¹¹ / ₁₆	1 ⁴⁷ / ₆₄	10 ⁵ / ₈	4 ⁵⁹ / ₆₄	4.2520	1.654	1 ¹ / ₂	UC320-314D1 UC320-315D1 UC320-400D1	
105	UCFL321D1	440	360	59	40	94	44	270	127	112	44	M39	UC321D1	
110	UCFL322D1	470	390	60	42	96	44	300	131	117	46	M39	UC322D1	
120	UCFL324D1	520	430	65	48	110	47	330	140	126	51	M42	UC324D1	
130	UCFL326D1	550	460	65	50	115	47	360	146	135	54	M42	UC326D1	
140	UCFL328D1	600	500	75	60	125	51	400	161	145	59	M45	UC328D1	

Remarks: 1) These numbers indicate relubricatable type. If maintenance free type is needed, please order without suffix "D1".
Note: Please refer to page 25 for size of grease fitting.

**Cast dust cover type**Open end: **C-UCFL...D1**Closed end: **CM-UCFL...D1**

Housing number	Unit number cast dust cover type	Nominal dimensions				Mass of unit	
		mm		inch		kg	lb
		<i>t</i> max.	<i>A</i> ₅	<i>L</i> ₁	<i>L</i> ₂	UCFL	C(CM)
FL319D1	C(CM)-UCFL319D1	5	149	260	125	22	26
FL319D1	C(CM)-UCFL319-310D1						
FL319D1	C(CM)-UCFL319-311D1	$1\frac{3}{64}$	$5\frac{7}{8}$	$10\frac{1}{4}$	$4\frac{29}{32}$	49	57
FL319D1	C(CM)-UCFL319-312D1						
FL320D1	C(CM)-UCFL320D1	5	154	280	135	27	31
FL320D1	C(CM)-UCFL320-313D1						
FL320D1	C(CM)-UCFL320-314D1	$1\frac{3}{64}$	$6\frac{1}{16}$	$11\frac{1}{32}$	$5\frac{5}{16}$	60	68
FL320D1	C(CM)-UCFL320-315D1						
FL320D1	C(CM)-UCFL320-400D1						
FL321D1	C(CM)-UCFL321D1	5	156	287	135	27	32
FL322D1	C(CM)-UCFL322D1	5	160	315	150	33	39
FL324D1	C(CM)-UCFL324D1	5	172	342	165	48	52
FL326D1	C(CM)-UCFL326D1	6	178	376	180	58	64
FL328D1	C(CM)-UCFL328D1	6	192	410	200	81	89

Flanged units cast housing
Set screw type

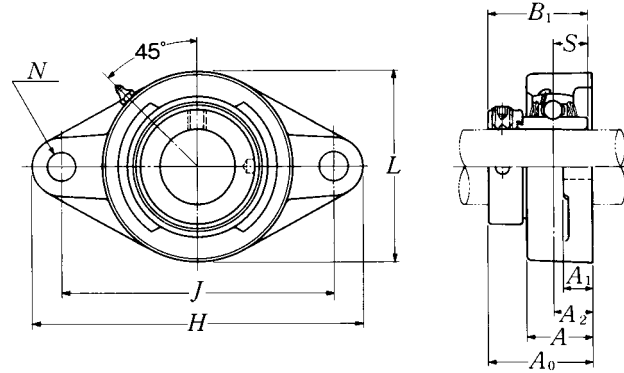


Shaft dia.	Unit number ¹⁾	Nominal dimensions										Bolt size	Bearing number
		mm		inch		mm		inch		mm			
mm inch		H	J	A ₂	A ₁	A	N	L	A ₀	B	S	mm inch	
25	UCFLX05D1	141	117	18	13	30	12	83	40.2	38.1	15.9	M10	UCX05D1
$\frac{13}{16}$	UCFLX05-013D1												UCX05-013D1
$\frac{7}{8}$	UCFLX05-014D1	$5\frac{9}{16}$	$4\frac{39}{64}$	$\frac{45}{64}$	$\frac{1}{2}$	$1\frac{3}{16}$	$\frac{15}{32}$	$3\frac{9}{32}$	$1\frac{37}{64}$	1.5000	0.626	$\frac{3}{8}$	UCX05-014D1
$\frac{15}{16}$	UCFLX05-015D1												UCX05-015D1
1	UCFLX05-100D1												UCX05-100D1
30	UCFLX06D1	156	130	19	15	34	16	95	44.4	42.9	17.5	M14	UCX06D1
$\frac{11}{16}$	UCFLX06-101D1												UCX06-101D1
$\frac{11}{8}$	UCFLX06-102D1	$6\frac{5}{32}$	$5\frac{1}{8}$	$\frac{3}{4}$	$\frac{19}{32}$	$1\frac{11}{32}$	$\frac{5}{8}$	$3\frac{3}{4}$	$1\frac{3}{4}$	1.6890	0.689	$\frac{1}{2}$	UCX06-102D1
$\frac{13}{16}$	UCFLX06-103D1												UCX06-103D1
$\frac{11}{4}$	UCFLX06-104D1												UC207-104D1
35	UCFLX07D1	171	144	21	16	38	16	105	51.2	49.2	19	M14	UCX07D1
$\frac{15}{16}$	UCFLX07-105D1												UCX07-105D1
$\frac{13}{8}$	UCFLX07-106D1	$6\frac{23}{32}$	$5\frac{43}{64}$	$\frac{53}{64}$	$\frac{5}{8}$	$1\frac{1}{2}$	$\frac{5}{8}$	$4\frac{1}{8}$	$2\frac{1}{64}$	1.9370	0.748	$\frac{1}{2}$	UCX07-106D1
$\frac{17}{16}$	UCFLX07-107D1												UCX07-107D1
40	UCFLX08D1	179	148	22	16	40	16	111	52.2	49.2	19	M14	UCX08D1
$1\frac{1}{2}$	UCFLX08-108D1	$7\frac{1}{16}$	$5\frac{53}{64}$	$\frac{55}{64}$	$\frac{5}{8}$	$1\frac{9}{16}$	$\frac{5}{8}$	$4\frac{3}{8}$	$2\frac{1}{16}$	1.9370	0.748	$\frac{1}{2}$	UCX08-108D1
$1\frac{9}{16}$	UCFLX08-109D1												UCX08-109D1
45	UCFLX09D1	189	157	23	16	40	16	116	55.6	51.6	19	M14	UCX09D1
$1\frac{5}{8}$	UCFLX09-110D1												UCX09-110D1
$1\frac{11}{16}$	UCFLX09-111D1	$7\frac{7}{16}$	$6\frac{3}{16}$	$\frac{29}{32}$	$\frac{5}{8}$	$1\frac{9}{16}$	$\frac{5}{8}$	$4\frac{9}{16}$	$2\frac{3}{16}$	2.0315	0.748	$\frac{1}{2}$	UCX09-111D1
$1\frac{3}{4}$	UCFLX09-112D1												UCX09-112D1
$1\frac{13}{16}$	UCFLX09-113D1												UC210-113D1
50	UCFLX10D1	216	184	26	18	44	19	133	59.4	55.6	22.2	M16	UCX10D1
$1\frac{7}{8}$	UCFLX10-114D1												UCX10-114D1
$1\frac{15}{16}$	UCFLX10-115D1	$8\frac{1}{2}$	$7\frac{1}{4}$	$1\frac{1}{32}$	$\frac{23}{32}$	$1\frac{23}{32}$	$\frac{3}{4}$	$5\frac{1}{4}$	$2\frac{11}{32}$	2.1890	0.874	$\frac{5}{8}$	UCX10-115D1
2	UCFLX10-200D1												UC211-200D1

Remarks: 1) These numbers indicate relubricatable type. If maintenance free type is needed, please order without suffix "D1".
Note: Please refer to page 25 for size of grease fitting.

Housing number	Mass of unit	
	kg	lb
FLX05D1	1.0	
FLX05D1		
FLX05D1	2.2	
FLX05D1		
FLX05D1		
FLX06D1	1.5	
FLX06D1		
FLX06D1	3.3	
FLX06D1		
FLX06D1		
FLX07D1	2.0	
FLX07D1		
FLX07D1	4.4	
FLX07D1		
FLX08D1	2.2	
FLX08D1	4.9	
FLX08D1		
FLX09D1	2.4	
FLX09D1		
FLX09D1	5.3	
FLX09D1		
FLX09D1		
FLX10D1	3.4	
FLX10D1		
FLX10D1	7.5	
FLX10D1		

**Flanged cartridge units cast housing
Eccentric locking collar type**

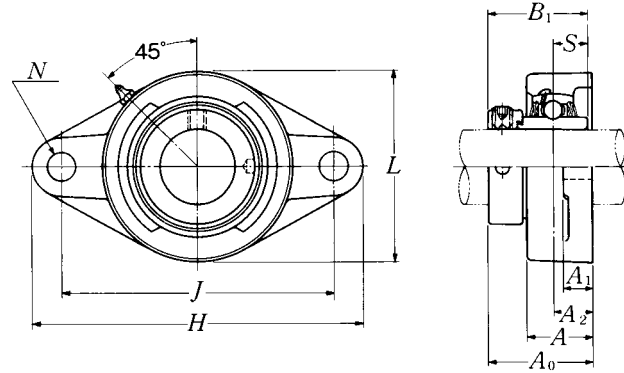


Shaft dia. mm inch	Unit number ¹⁾	Nominal dimensions											Bolt size mm inch
		H	J	A ₂	A ₁	A	N	L	A ₀	B ₁	S		
20 3/4	UELFLU204D1W3	113	90	19	15	29.5	11.5	61	45.6	43.7	17.1	M10	
	UELFLU204-012D1W3	4 7/16	3 35/64	3/4	1 9/32	1 5/32	2 29/64	2 13/32	1 51/64	1.720	0.673	5/16	
25 1 13/16 7/8 1 15/16 1	UELFLU205D1W3	125	99	19	15	30	11.5	70	45.9	44.4	17.5	M10	
	UELFLU205-013D1W3	4 29/32	3 57/64	3/4	1 9/32	1 3/16	2 29/64	2 3/4	1 13/16	1.748	0.689	3/8	
	UELFLU205-014D1W3												
	UELFLU205-015D1W3												
UELFLU205-100D1W3													
30 1 1/16 1 1/8 1 3/16 1 1/4	UELFLU206D1W3	142	116.5	20	16	33	11.5	83	50.1	48.4	18.3	M10	
	UELFLU206-101D1W3	5 19/32	4 19/32	2 5/32	5/8	1 5/16	2 29/64	3 9/32	1 31/32	1.906	0.720	3/8	
	UELFLU206-102D1W3												
	UELFLU206-103D1W3												
UELFLU206-104D1W3													
35 1 1/4 1 5/16 1 3/8 1 7/16	UELFLU207D1W3	156	130	21	17	36	14	96	53.3	51.1	18.8	M12	
	UELFLU207-104D1W3	6 5/32	5 1/8	5 3/64	2 1/32	1 13/32	3 5/64	3 25/32	2 3/32	2.012	0.740	1/2	
	UELFLU207-105D1W3												
	UELFLU207-106D1W3												
UELFLU207-107D1W3													
40 1 1/2 1 9/16	UELFLU208D1W3	172	143.5	24	17	39	14	105	58.9	56.3	21.4	M12	
	UELFLU208-108D1W3	6 25/32	5 21/32	1 5/16	2 1/32	1 17/32	3 5/64	4 1/8	2 5/16	2.217	0.843	1/2	
	UELFLU208-109D1W3												
45 1 5/8 1 11/16 1 3/4	UELFLU209D1W3	180	148.5	24	18	40	16	111	58.9	56.3	21.4	M14	
	UELFLU209-110D1W3	7 3/32	5 27/32	1 5/16	2 3/32	1 9/16	5/8	4 3/8	2 5/16	2.217	0.843	1/2	
	UELFLU209-111D1W3												
UELFLU209-112D1W3													
50 1 13/16 1 7/8 1 15/16 2	UELFLU210D1W3	190	157	28	20	46	18	116	66.1	62.7	24.6	M16	
	UELFLU210-113D1W3	7 15/32	6 3/16	1 7/64	2 5/32	1 13/16	4 5/64	4 9/16	2 39/64	2.469	0.969	5/8	
	UELFLU210-114D1W3												
	UELFLU210-115D1W3												
UELFLU210-200D1W3													

Remarks: 1) These numbers indicate relubricatable type. If maintenance free type is needed, please order without suffix "D1".
Note: Please refer to page 25 for size of grease fitting.

Bearing number	Housing number	Mass of unit	
		kg	lb
UEL204D1W3	FLU204D1	0.6	
UEL204-012D1W3	FLU204D1	1.3	
UEL205D1W3	FLU205D1	0.8	
UEL205-013D1W3	FLU205D1		
UEL205-014D1W3	FLU205D1	1.8	
UEL205-015D1W3	FLU205D1		
UEL205-100D1W3	FLU205D1		
UEL206D1W3	FLU206D1	1.1	
UEL206-101D1W3	FLU206D1		
UEL206-102D1W3	FLU206D1	2.4	
UEL206-103D1W3	FLU206D1		
UEL206-104D1W3	FLU206D1		
UEL207D1W3	FLU207D1	1.4	
UEL207-104D1W3	FLU207D1		
UEL207-105D1W3	FLU207D1	3.1	
UEL207-106D1W3	FLU207D1		
UEL207-107D1W3	FLU207D1		
UEL208D1W3	FLU208D1	1.8	
UEL208-108D1W3	FLU208D1	4.0	
UEL208-109D1W3	FLU208D1		
UEL209D1W3	FLU209D1	2.1	
UEL209-110D1W3	FLU209D1		
UEL209-111D1W3	FLU209D1	4.6	
UEL209-112D1W3	FLU209D1		
UEL210D1W3	FLU210D1	2.5	
UEL210-113D1W3	FLU210D1		
UEL210-114D1W3	FLU210D1	5.5	
UEL210-115D1W3	FLU210D1		
UEL210-200D1W3	FLU210D1		

Flanged cartridge units cast housing
Eccentric locking collar type

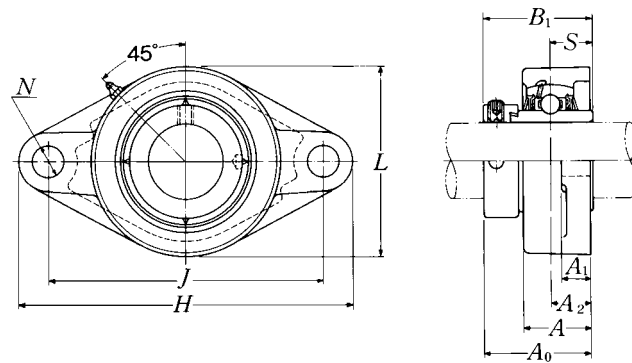


Shaft dia. mm inch	Unit number ¹⁾	Nominal dimensions										Bolt size mm inch
		H	J	A ₂	A ₁	A	N	L	A ₀	B ₁	S	
55 2 2 ¹ / ₁₆ 2 ¹ / ₈ 2 ³ / ₁₆	UELFLU211D1W3	217	184	31	21	49	18	134	74.6	71.4	27.8	M16 5/8
	UELFLU211-200D1W3											
	UELFLU211-201D1W3											
	UELFLU211-202D1W3											
60 2 ¹ / ₄ 2 ⁵ / ₁₆ 2 ³ / ₈ 2 ⁷ / ₁₆	UELFLU212D1W3	235	202	34	21	53	18	138	80.8	77.8	31	M16 5/8
	UELFLU212-204D1W3											
	UELFLU212-205D1W3											
	UELFLU212-206D1W3											
65 2 ¹ / ₂ 2 ⁹ / ₁₆	UELFLU213D1W3	248	210	38	22	59	20.5	152	89.55	85.7	34.15	M18 5/8
	UELFLU213-208D1W3											
	UELFLU213-209D1W3											
70 2 ⁵ / ₈ 2 ¹¹ / ₁₆ 2 ³ / ₄	UELFLU214D1W3	257	216	38	22	62	20.5	159	89.55	85.7	34.15	M18 5/8
	UELFLU214-210D1W3											
	UELFLU214-211D1W3											
	UELFLU214-212D1W3											
75 2 ¹³ / ₁₆ 2 ⁷ / ₈ 2 ¹⁵ / ₁₆ 3	UELFLU215D1W3	266	225	41	22	65	20.5	165	95.7	92	37.3	M18 5/8
	UELFLU215-213D1W3											
	UELFLU215-214D1W3											
	UELFLU215-215D1W3											
	UELFLU215-300D1W3											

Remarks: 1) These numbers indicate relubricatable type. If maintenance free type is needed, please order without suffix "D1".
Note: Please refer to page 25 for size of grease fitting.

Bearing number	Housing number	Mass of unit	
		kg	lb
UEL211D1W3	FLU211D1	3.5	
UEL211-200D1W3	FLU211D1		
UEL211-201D1W3	FLU211D1	7.7	
UEL211-202D1W3	FLU211D1		
UEL211-203D1W3	FLU211D1		
UEL212D1W3	FLU212D1	4.5	
UEL212-204D1W3	FLU212D1		
UEL212-205D1W3	FLU212D1	9.9	
UEL212-206D1W3	FLU212D1		
UEL212-207D1W3	FLU212D1		
UEL213D1W3	FLU213D1	5.6	
UEL213-208D1W3	FLU213D1	12	
UEL213-209D1W3	FLU213D1		
UEL214D1W3	FLU214D1	5.7	
UEL214-210D1W3	FLU214D1		
UEL214-211D1W3	FLU214D1	13	
UEL214-212D1W3	FLU214D1		
UEL215D1W3	FLU215D1	6.6	
UEL215-213D1W3	FLU215D1		
UEL215-214D1W3	FLU215D1	15	
UEL215-215D1W3	FLU215D1		
UEL215-300D1W3	FLU215D1		

Flanged units cast housing
Eccentric locking collar type

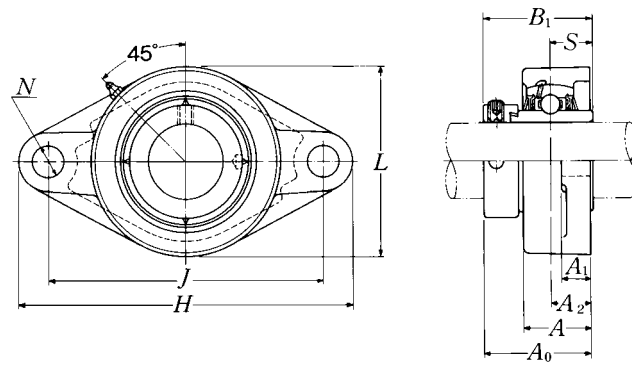


Shaft dia.	Unit number ¹⁾	Nominal dimensions										Bolt size	Bearing number
		mm					inch						
		H	J	A ₂	A ₁	A	N	L	A ₀	B ₁	S		
20 3/4	UELFL204D1W3 UELFL204-012D1W3	113 4 7/16	90 3 35/64	15 19/32	11 7/16	25.5 1	12 15/32	60 2 3/8	41.6 1 41/64	43.7 1.720	17.1 0.673	M10 3/8	UEL204D1W3 UEL204-012D1W3
25 1 13/16 7/8 1 15/16 1	UELFL205D1W3 UELFL205-013D1W3 UELFL205-014D1W3 UELFL205-015D1W3 UELFL205-100D1W3	130 5 1/8	99 3 57/64	16 5/8	13 1/2	27 1 1/16	16 5/8	68 2 11/64	42.9 1 11/16	44.4 1.748	17.5 0.689	M14 1/2	UEL205D1W3 UEL205-013D1W3 UEL205-014D1W3 UEL205-015D1W3 UEL205-100D1W3
30 1 1/6 1 1/8 1 3/16 1 1/4	UELFL206D1W3 UELFL206-101D1W3 UELFL206-102D1W3 UELFL206-103D1W3 UELFL206-104D1W3	148 5 13/16	117 4 9/64	18 45/64	13 1/2	31 1 7/32	16 5/8	80 3 5/32	48.1 1 57/64	48.4 1.906	18.3 0.720	M14 1/2	UEL206D1W3 UEL206-101D1W3 UEL206-102D1W3 UEL206-103D1W3 UEL206-104D1W3
35 1 1/4 1 5/16 1 3/8 1 7/16	UELFL207D1W3 UELFL207-104D1W3 UELFL207-105D1W3 UELFL207-106D1W3 UELFL207-107D1W3	161 6 11/32	130 5 1/8	19 3/4	15 19/32	34 1 11/32	16 5/8	90 3 17/32	51.3 2 1/64	51.1 2.012	18.8 0.740	M14 1/2	UEL207D1W3 UEL207-104D1W3 UEL207-105D1W3 UEL207-106D1W3 UEL207-107D1W3
40 1 1/2 1 9/16	UELFL208D1W3 UELFL208-108D1W3 UELFL208-109D1W3	175 6 7/8	144 5 43/64	21 53/64	15 19/32	36 1 13/32	16 5/8	100 3 15/16	55.9 2 13/16	56.3 2.217	21.4 0.843	M14 1/2	UEL208D1W3 UEL208-108D1W3 UEL208-109D1W3
45 1 5/8 1 11/16 1 3/4	UELFL209D1W3 UELFL209-110D1W3 UELFL209-111D1W3 UELFL209-112D1W3	188 7 13/32	148 5 53/64	22 55/64	16 5/8	38 1 1/2	19 3/4	108 4 1/4	56.9 2 15/64	56.3 2.217	21.4 0.843	M16 5/8	UEL209D1W3 UEL209-110D1W3 UEL209-111D1W3 UEL209-112D1W3
50 1 13/16 1 7/8 1 15/16 2	UELFL210D1W3 UELFL210-113D1W3 UELFL210-114D1W3 UELFL210-115D1W3 UELFL210-200D1W3	197 7 3/4	157 6 3/16	22 55/64	16 5/8	40 1 9/16	19 3/4	115 4 17/32	60.1 2 23/64	62.7 2.469	24.6 0.969	M16 5/8	UEL210D1W3 UEL210-113D1W3 UEL210-114D1W3 UEL210-115D1W3 UEL210-200D1W3

Remarks: 1) These numbers indicate relubricatable type. If maintenance free type is needed, please order without suffix "D1".
Note: Please refer to page 25 for size of grease fitting.

Housing number	Mass of unit	
	kg	lb
FL204D1	0.6	
FL204D1	1.3	
FL205D1	0.7	
FL205D1		
FL205D1	1.5	
FL205D1		
FL205D1		
FL206D1	1.0	
FL206D1		
FL206D1	2.2	
FL206D1		
FL206D1		
FL207D1	1.3	
FL207D1		
FL207D1	2.9	
FL207D1		
FL207D1		
FL208D1	1.7	
FL208D1	3.7	
FL208D1		
FL209D1	2.0	
FL209D1		
FL209D1	4.4	
FL209D1		
FL210D1	2.3	
FL210D1		
FL210D1	5.1	
FL210D1		
FL210D1		

Flanged units cast housing
Eccentric locking collar type

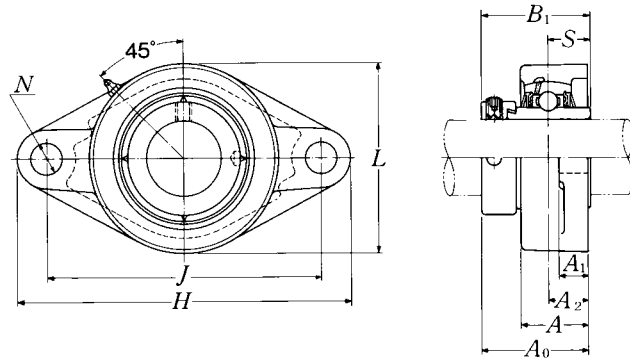


Shaft dia.	Unit number ¹⁾	Nominal dimensions										Bolt size	Bearing number
		mm					inch						
		H	J	A ₂	A ₁	A	N	L	A ₀	B ₁	S		
55	UELFL211D1W3	224	184	25	18	43	19	130	68.6	71.4	27.8	M16	UEL211D1W3
2	UELFL211-200D1W3												UEL211-200D1W3
2 ¹ / ₁₆	UELFL211-201D1W3												UEL211-201D1W3
2 ¹ / ₈	UELFL211-202D1W3												UEL211-202D1W3
2 ³ / ₁₆	UELFL211-203D1W3												UEL211-203D1W3
60	UELFL212D1W3	250	202	29	18	48	23	140	75.8	77.8	31	M20	UEL212D1W3
2 ¹ / ₄	UELFL212-204D1W3												UEL212-204D1W3
2 ⁵ / ₁₆	UELFL212-205D1W3												UEL212-205D1W3
2 ³ / ₈	UELFL212-206D1W3												UEL212-206D1W3
2 ⁷ / ₁₆	UELFL212-207D1W3												UEL212-207D1W3
65	UELFL213D1W3	258	210	30	22	50	23	155	81.55	85.7	34.15	M20	UEL213D1W3
2 ¹ / ₂	UELFL213-208D1W3												UEL213-208D1W3
2 ⁹ / ₁₆	UELFL213-209D1W3												UEL213-209D1W3
70	UELFL214D1W3	265	216	31	22	54	23	160	82.55	85.7	34.15	M20	UEL214D1W3
2 ⁵ / ₈	UELFL214-210D1W3												UEL214-210D1W3
2 ¹¹ / ₁₆	UELFL214-211D1W3												UEL214-211D1W3
2 ³ / ₄	UELFL214-212D1W3												UEL214-212D1W3
75	UELFL215D1W3	275	225	34	22	56	23	165	88.7	92	37.3	M20	UEL215D1W3
2 ¹³ / ₁₆	UELFL215-213D1W3												UEL215-213D1W3
2 ⁷ / ₈	UELFL215-214D1W3												UEL215-214D1W3
2 ¹⁵ / ₁₆	UELFL215-215D1W3												UEL215-215D1W3
3	UELFL215-300D1W3												UEL215-300D1W3

Remarks: 1) These numbers indicate relubricatable type. If maintenance free type is needed, please order without suffix "D1".
Note: Please refer to page 25 for size of grease fitting.

Housing number	Mass of unit	
	kg	lb
FL211D1	3.3	
FL211D1		
FL211D1	7.3	
FL211D1		
FL211D1		
FL212D1	4.3	
FL212D1		
FL212D1	9.5	
FL212D1		
FL212D1		
FL213D1	5.5	
FL213D1	12	
FL213D1		
FL214D1	5.8	
FL214D1		
FL214D1	13	
FL214D1		
FL215D1	6.4	
FL215D1		
FL215D1	14	
FL215D1		
FL215D1		

Flanged units cast housing
Eccentric locking collar type



Shaft dia.	Unit number ^{1) 2)}	Nominal dimensions										Bolt size	Bearing number
		mm					inch						
		H	J	A ₂	A ₁	A	N	L	A ₀	B ₁	S		
25 13/16 7/8 15/16 1	UELFL305D1W3 UELFL305-013D1W3 UELFL305-014D1W3 UELFL305-015D1W3 UELFL305-100D1W3	150 529/32	113 429/64	16 5/8	13 1/2	29 1 5/32	19 3/4	80 3 5/32	46.1 1 13/16	46.8 1.843	16.7 0.657	M16 5/8	UEL305D1W3 UEL305-013D1W3 UEL305-014D1W3 UEL305-015D1W3 UEL305-100D1W3
30 1 1/16 1 1/8 1 3/16	UELFL306D1W3 UELFL306-101D1W3 UELFL306-102D1W3 UELFL306-103D1W3	180 7 3/32	134 5 9/32	18 45/64	15 19/32	32 1 1/4	23 29/32	90 3 17/32	50.5 1 63/64	50 1.969	17.5 0.689	M20 3/4	UEL306D1W3 UEL306-101D1W3 UEL306-102D1W3 UEL306-103D1W3
35 1 1/4 1 5/16 1 3/8 1 7/16	UELFL307D1W3 UELFL307-104D1W3 UELFL307-105D1W3 UELFL307-106D1W3 UELFL307-107D1W3	185 7 9/32	141 5 35/64	20 25/32	16 5/8	36 1 13/32	23 29/32	100 3 15/16	53.3 2 3/32	51.6 2.031	18.3 0.720	M20 3/4	UEL307D1W3 UEL307-104D1W3 UEL307-105D1W3 UEL307-106D1W3 UEL307-107D1W3
40 1 1/2 1 9/16	UELFL308D1W3 UELFL308-108D1W3 UELFL308-109D1W3	200 7 7/8	158 6 7/32	23 29/32	17 21/32	40 1 9/16	23 29/32	112 4 13/32	60.3 2 3/8	57.1 2.248	19.8 0.780	M20 3/4	UEL308D1W3 UEL308-108D1W3 UEL308-109D1W3
45 1 5/8 1 11/16 1 3/4	UELFL309D1W3 UELFL309-110D1W3 UELFL309-111D1W3 UELFL309-112D1W3	230 9 1/16	177 6 31/32	25 63/64	18 23/32	44 1 23/32	25 63/64	125 4 29/32	63.9 2 33/64	58.7 2.311	19.8 0.780	M22 7/8	UEL309D1W3 UEL309-110D1W3 UEL309-111D1W3 UEL309-112D1W3
50 1 13/16 1 7/8 1 15/16	UELFL310D1W3 UELFL310-113D1W3 UELFL310-114D1W3 UELFL310-115D1W3	240 9 7/16	187 7 23/64	28 1 7/64	19 3/4	48 1 7/8	25 63/64	140 5 1/2	70 2 3/4	66.6 2.622	24.6 0.969	M22 7/8	UEL310D1W3 UEL310-113D1W3 UEL310-114D1W3 UEL310-115D1W3
55 2 2 1/16 2 1/8 2 3/16	UELFL311D1W3 UELFL311-200D1W3 UELFL311-201D1W3 UELFL311-202D1W3 UELFL311-203D1W3	250 9 27/32	198 7 51/64	30 1 3/16	20 25/32	52 2 1/16	25 63/64	150 5 29/32	75.2 2 61/64	73 2.874	27.8 1.094	M22 7/8	UEL311D1W3 UEL311-200D1W3 UEL311-201D1W3 UEL311-202D1W3 UEL311-203D1W3

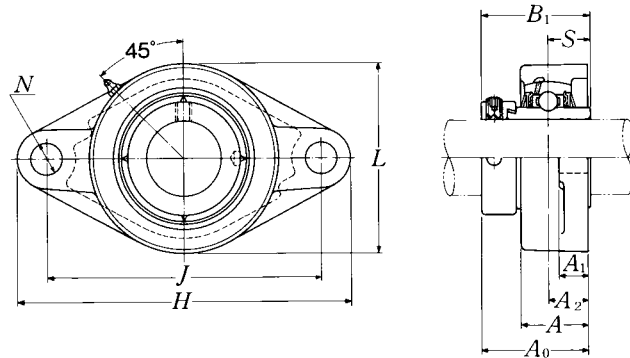
Remarks: 1) These numbers indicate relubricatable type. If maintenance free type is needed, please order without suffix "D1".

2) Inner race face does not protrude from the housing face except UELFL305 and UELFL316.

Note: Please refer to page 25 for size of grease fitting.

Housing number	Mass of unit	
	kg	lb
FL305D1	1.1	
FL305D1		
FL305D1	2.4	
FL305D1		
FL305D1		
FL306D1	1.6	
FL306D1		
FL306D1	3.5	
FL306D1		
FL307D1	2.0	
FL307D1		
FL307D1	4.4	
FL307D1		
FL307D1		
FL308D1	2.6	
FL308D1		
FL308D1	5.7	
FL309D1	3.6	
FL309D1		
FL309D1	7.9	
FL309D1		
FL310D1	4.6	
FL310D1		
FL310D1	10	
FL310D1		
FL311D1	5.3	
FL311D1		
FL311D1	12	
FL311D1		
FL311D1		

Flanged units cast housing
Eccentric locking collar type



Shaft dia.	Unit number ^{1) 2)}	Nominal dimensions											Bolt size	Bearing number
		mm						inch						
		H	J	A ₂	A ₁	A	N	L	A ₀	B ₁	S			
60	UELFL312D1W3	270	212	33	22	56	31	160	81.45	79.4	30.95	M27	UEL312D1W3	
2¹/₄	UELFL312-204D1W3												UEL312-204D1W3	
2⁵/₁₆	UELFL312-205D1W3	10 ⁵ / ₈	8 ¹¹ / ₃₂	1 ¹⁹ / ₆₄	7/8	2 ⁷ / ₃₂	1 ⁷ / ₃₂	6 ⁵ / ₁₆	3 ¹³ / ₆₄	3.126	1.219	1	UEL312-205D1W3	
2³/₈	UELFL312-206D1W3												UEL312-206D1W3	
2⁷/₁₆	UELFL312-207D1W3												UEL312-207D1W3	
65	UELFL313D1W3	295	240	33	25	58	31	175	86.15	85.7	32.55	M27	UEL313D1W3	
2¹/₂	UELFL313-208D1W3												UEL313-208D1W3	
2⁹/₁₆	UELFL313-209D1W3	11 ⁵ / ₈	9 ²⁹ / ₆₄	1 ¹⁹ / ₆₄	3 ¹ / ₃₂	2 ⁹ / ₃₂	1 ⁷ / ₃₂	6 ⁷ / ₈	3 ²⁵ / ₆₄	3.374	1.281	1	UEL313-209D1W3	
70	UELFL314D1W3	315	250	36	28	61	35	185	93.95	92.1	34.15	M30	UEL314D1W3	
2⁵/₈	UELFL314-210D1W3												UEL314-210D1W3	
2¹¹/₁₆	UELFL314-211D1W3	12 ¹³ / ₃₂	9 ²⁷ / ₃₂	1 ²⁷ / ₆₄	1 ³ / ₃₂	2 ¹³ / ₃₂	1 ³ / ₈	7 ⁹ / ₃₂	3 ⁴⁵ / ₆₄	3.626	1.344	1 ¹ / ₈	UEL314-211D1W3	
2³/₄	UELFL314-212D1W3												UEL314-212D1W3	
75	UELFL315D1W3	320	260	39	30	66	35	195	101.7	100	37.3	M30	UEL315D1W3	
2¹³/₁₆	UELFL315-213D1W3												UEL315-213D1W3	
2⁷/₈	UELFL315-214D1W3	12 ¹⁹ / ₃₂	10 ¹⁵ / ₆₄	1 ¹⁷ / ₃₂	1 ³ / ₁₆	2 ¹⁹ / ₃₂	1 ³ / ₈	7 ¹¹ / ₁₆	4	3.937	1.469	1 ¹ / ₈	UEL315-214D1W3	
2¹⁵/₁₆	UELFL315-215D1W3												UEL315-215D1W3	
3	UELFL315-300D1W3												UEL315-300D1W3	
80	UELFL316D1W3	355	285	38	32	68	38	210	103.9	106.4	40.5	M33	UEL316D1W3	
3¹/₁₆	UELFL316-301D1W3												UEL316-301D1W3	
3¹/₈	UELFL316-302D1W3	13 ³¹ / ₃₂	11 ⁷ / ₃₂	1 ¹ / ₂	1 ¹ / ₄	2 ¹¹ / ₁₆	1 ¹ / ₂	8 ⁹ / ₃₂	4 ³ / ₃₂	4.189	1.594	1 ¹ / ₄	UEL316-302D1W3	
3³/₁₆	UELFL316-303D1W3												UEL316-303D1W3	
85	UELFL317D1W3	370	300	44	32	74	38	220	111.45	109.5	42.05	M33	UEL317D1W3	
3¹/₄	UELFL317-304D1W3												UEL317-304D1W3	
3⁵/₁₆	UELFL317-305D1W3	14 ⁹ / ₁₆	11 ¹³ / ₁₆	1 ⁴⁷ / ₆₄	1 ¹ / ₄	2 ²⁹ / ₃₂	1 ¹ / ₂	8 ²¹ / ₃₂	4 ²⁵ / ₆₄	4.311	1.656	1 ¹ / ₄	UEL317-305D1W3	
3⁷/₁₆	UELFL317-307D1W3												UEL317-307D1W3	
90	UELFL318D1W3	385	315	44	36	76	38	235	116.25	115.9	43.65	M33	UEL318D1W3	
3⁷/₁₆	UELFL318-307D1W3												UEL318-307D1W3	
3¹/₂	UELFL318-308D1W3	15 ⁵ / ₃₂	12 ¹³ / ₃₂	1 ⁴⁷ / ₆₄	1 ¹³ / ₃₂	3	1 ¹ / ₂	9 ¹ / ₄	4 ³⁷ / ₆₄	4.563	1.719	1 ¹ / ₄	UEL318-308D1W3	

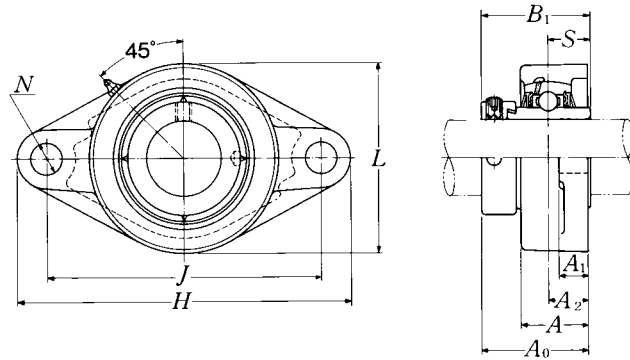
Remarks: 1) These numbers indicate relubricatable type. If maintenance free type is needed, please order without suffix "D1".

2) Inner race face does not protrude from the housing face except UELFL305 and UELFL316.

Note: Please refer to page 25 for size of grease fitting.

Housing number	Mass of unit	
	kg	lb
FL312D1	6.4	
FL312D1		
FL312D1	14	
FL312D1		
FL312D1		
FL313D1	8.2	
FL313D1	18	
FL313D1		
FL314D1	9.5	
FL314D1		
FL314D1	21	
FL314D1		
FL315D1	11	
FL315D1		
FL315D1	24	
FL315D1		
FL315D1		
FL316D1	14	
FL316D1		
FL316D1	31	
FL316D1		
FL317D1	16	
FL317D1		
FL317D1	35	
FL317D1		
FL318D1	19	
FL318D1	42	
FL318D1		

Flanged units cast housing
Eccentric locking collar type



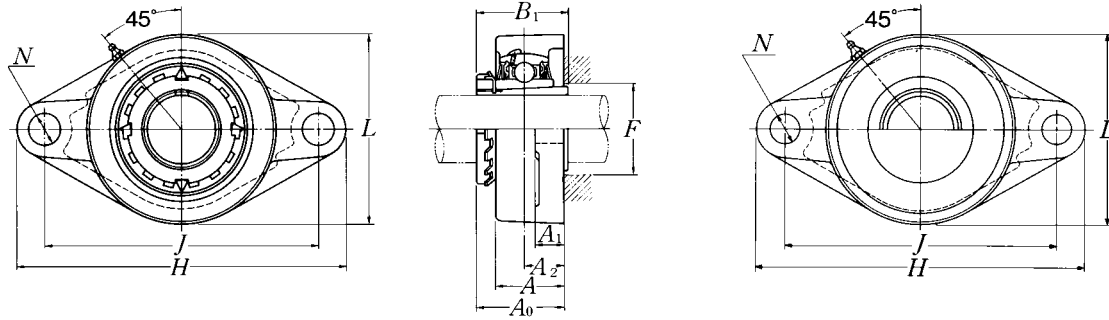
Shaft dia.	Unit number ^{1) 2)}	Nominal dimensions											Bolt size	Bearing number
		mm					inch							
mm inch		H	J	A ₂	A ₁	A	N	L	A ₀	B ₁	S	mm inch		
95	UELFL319D1W3	405	330	59	40	94	41	250	142.4	122.3	38.9	M36	UEL319D1W3	
3⁵/₈	UELFL319-310D1W3												UEL319-310D1W3	
3¹¹/₁₆	UELFL319-311D1W3	15 ¹⁵ / ₁₆	12 ⁶³ / ₆₄	2 ²¹ / ₆₄	1 ⁹ / ₁₆	3 ¹¹ / ₁₆	1 ³⁹ / ₆₄	9 ²⁷ / ₃₂	5 ³⁹ / ₆₄	4.815	1.531	1 ³ / ₈	UEL319-311D1W3	
3³/₄	UELFL319-312D1W3												UEL319-312D1W3	
100	UELFL320D1W3	440	360	59	40	94	44	270	137.6	128.6	50	M39	UEL320D1W3	
3¹³/₁₆	UELFL320-313D1W3												UEL320-313D1W3	
3⁷/₈	UELFL320-314D1W3	17 ⁵ / ₁₆	14 ¹¹ / ₆₄	2 ²¹ / ₆₄	1 ⁹ / ₁₆	3 ¹¹ / ₁₆	1 ⁴⁷ / ₆₄	10 ⁵ / ₈	5 ²⁷ / ₆₄	5.063	1.969	1 ¹ / ₂	UEL320-314D1W3	
3¹⁵/₁₆	UELFL320-315D1W3												UEL320-315D1W3	
4	UELFL320-400D1W3												UEL320-400D1W3	
105	UELFL321D1W3	440	360	59	40	94	44	270	150.3	139.7	48.4	M39	UEL321D1W3	
110	UELFL322D1W3	470	390	60	42	96	44	300	152.1	141.3	49.2	M39	UEL322D1W3	

Remarks: 1) These numbers indicate relubricatable type. If maintenance free type is needed, please order without suffix "D1".

Note: Please refer to page 25 for size of grease fitting.

Housing number	Mass of unit
	kg lb
FL319D1	24
FL319D1	
FL319D1	53
FL319D1	
FL320D1	29
FL320D1	
FL320D1	64
FL320D1	
FL320D1	
FL321D1	30
FL322D1	36

Flanged units cast housing
Adapter type



Pressed steel dust cover type

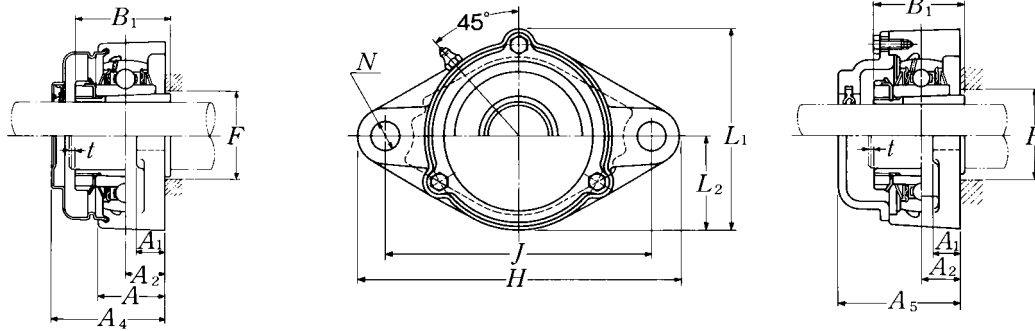
Open end: **S-UKFL...D1**

Closed end: **SM-UKFL...D1**

Shaft dia. mm inch	Unit number ^{1) 2) 3)}	Nominal dimensions											Bolt size mm inch	Bearing number
		H	J	A ₂	A ₁	A	N	L	A ₀	B ₁	F min.			
20 3/4	UKFL205D1;H2305X UKFL205D1;HE2305	130 5 1/8	99 3 57/64	16 5/8	13 1/2	27 1 1/16	16 5/8	68 2 11/16	35.5 1 25/64	35 1.378	30 1 3/16	M14 1/2	UK205D1;H2305X UK205D1;HE2305	
25 7/8 1	UKFL206D1;H2306X UKFL206D1;HS2306 UKFL206D1;HE2306X	148 5 13/16	117 4 39/64	18 45/64	13 1/2	31 1 7/32	16 5/8	80 3 5/32	39 1 17/32	38 1.496	36 1 13/32	M14 1/2	UK206D1;H2306X UK206D1;HS2306 UK206D1;HE2306X	
30 1 1/8	UKFL207D1;H2307X UKFL207D1;HS2307	161 6 11/32	130 5 1/8	19 3/4	15 19/32	34 1 11/32	16 5/8	90 3 17/32	42.5 1 43/64	43 1.693	40 1 9/16	M14 1/2	UK207D1;H2307X UK207D1;HS2307	
35 1 1/4 1 3/8	UKFL208D1;H2308X UKFL208D1;HE2308X UKFL208D1;HS2308X	175 6 7/8	144 5 43/64	21 53/64	15 19/32	36 1 13/32	16 5/8	100 3 15/16	46.5 1 53/64	46 1.811	46 1 13/16	M14 1/2	UK208D1;H2308X UK208D1;HE2308X UK208D1;HS2308X	
40 1 7/16 1 1/2 1 5/8	UKFL209D1;H2309X UKFL209D1;HA2309 UKFL209D1;HE2309X UKFL209D1;HS2309X	188 7 13/32	148 5 53/64	22 55/64	16 5/8	38 1 1/2	19 3/4	108 4 1/4	48.5 1 29/32	50 1.969	52 2 1/16	M16 5/8	UK209D1;H2309X UK209D1;HA2309 UK209D1;HE2309X UK209D1;HS2309X	
45 1 5/8 1 11/16 1 3/4	UKFL210D1;H2310X UKFL210D1;HS2310 UKFL210D1;HA2310 UKFL210D1;HE2310X	197 7 3/4	157 6 3/16	22 55/64	16 5/8	40 1 9/16	19 3/4	115 4 17/32	50 1 31/32	55 2.165	57 2 1/4	M16 5/8	UK210D1;H2310X UK210D1;HS2310 UK210D1;HA2310 UK210D1;HE2310X	
50 1 7/8 1 15/16 2	UKFL211D1;H2311X UKFL211D1;HS2311 UKFL211D1;HA2311 UKFL211D1;HE2311XY	224 8 13/16	184 7 1/4	25 63/64	18 23/32	43 1 11/16	19 3/4	130 5 1/8	54.5 2 9/64	59 2.323	64 2 17/32	M16 5/8	UK211D1;H2311X UK211D1;HS2311 UK211D1;HA2311 UK211D1;HE2311XY	
55 2 1/8	UKFL212D1;H2312X UKFL212D1;HS2312	250 9 27/32	202 7 61/64	29 1 9/64	18 23/32	48 1 7/8	23 29/32	140 5 1/2	61 2 13/32	62 2.441	69 2 23/32	M20 3/4	UK212D1;H2312X UK212D1;HS2312	
60 2 3/16 2 1/4 2 3/8	UKFL213D1;H2313X UKFL213D1;HA2313 UKFL213D1;HE2313X UKFL213D1;HS2313X	258 10 5/32	210 8 17/64	30 1 3/16	22 7/8	50 1 31/32	23 29/32	155 6 3/32	64 2 33/64	65 2.559	74 2 29/32	M20 3/4	UK213D1;H2313X UK213D1;HA2313 UK213D1;HE2313X UK213D1;HS2313X	

- Remarks: 1) These numbers indicate relubricatable type. If maintenance free type is needed, please order without suffix "D1".
 2) Adapter number with suffix "X" means a narrow slot type adapter sleeve.
 In this case the lock washer with the straight inner prong should be used.
 3) For HE2311XY, screw thread pitch different from the standard is applied, because of the thin thread section of sleeve.
 To distinguish it, a suffix "Y" is added.
 4) If the inch series housing units with dust cover are ordered with a closed end, the suffixes E, S or A are not included.
 Example: SM-UKFL205D1; HE2305

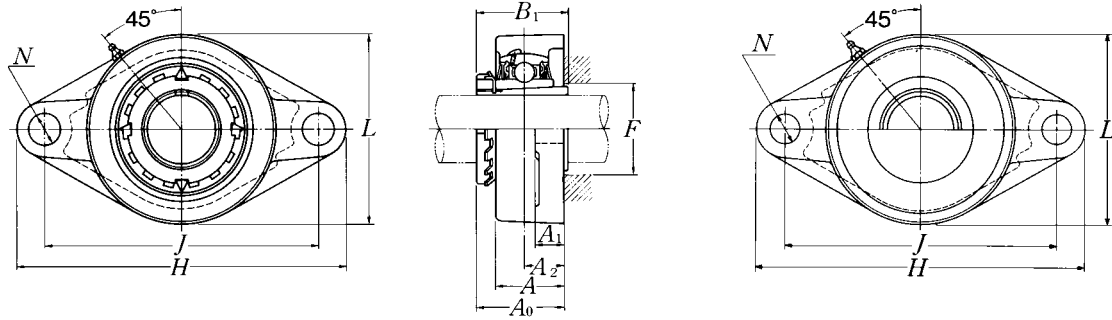
Note: Please refer to page 25 for size of grease fitting.



Cast dust cover type
 Open end: **C-UKFL...D1**
 Closed end: **CM-UKFL...D1**

Housing number	Unit number ⁴⁾ pressed steel dust cover type	Unit number ⁴⁾ cast dust cover type	Nominal dimensions					Mass of unit		
			mm		inch			kg		lb
			t	A ₄	A ₅	L ₁	L ₂	UKFL	S(SM)	C(CM)
FL205D1	S(SM)-UKFL205D1;H2305X	C(CM)-UKFL205D1;H2305X	2	44.5	51	74	34	0.6	0.7	0.9
FL205D1	S(SM)-UKFL205ED1;HE2305	C(CM)-UKFL205ED1;HE2305	5/64	1 3/4	2	2 29/32	1 11/32	1.3	1.5	2.0
FL206D1	S(SM)-UKFL206D1;H2306X	C(CM)-UKFL206D1;H2306X	2	49	56	85	40	1.0	1.0	1.3
FL206D1	S(SM)-UKFL206SD1;HS2306	C(CM)-UKFL206SD1;HS2306	5/64	1 15/16	2 7/32	3 11/32	1 9/16	2.2	2.2	2.9
FL206D1	S(SM)-UKFL206ED1;HE2306X	C(CM)-UKFL206ED1;HE2306X								
FL207D1	S(SM)-UKFL207D1;H2307X	C(CM)-UKFL207D1;H2307X	3	55	59	97	45	1.3	1.3	1.9
FL207D1	S(SM)-UKFL207SD1;HS2307	C(CM)-UKFL207SD1;HS2307	1/8	2 5/32	2 5/16	3 13/16	1 25/32	2.9	2.9	4.2
FL208D1	S(SM)-UKFL208D1;H2308X	C(CM)-UKFL208D1;H2308X	3	62	66	106	50	1.6	1.7	2.3
FL208D1	S(SM)-UKFL208ED1;HE2308X	C(CM)-UKFL208ED1;HE2308X	1/8	2 7/16	2 19/32	4 3/16	1 31/32	3.5	3.7	5.1
FL208D1	S(SM)-UKFL208D1;HS2308X	C(CM)-UKFL208D1;HS2308X								
FL209D1	S(SM)-UKFL209D1;H2309X	C(CM)-UKFL209D1;H2309X	3	63	70	113	54	2.0	2.1	2.7
FL209D1	S(SM)-UKFL209AD1;HA2309	C(CM)-UKFL209AD1;HA2309								
FL209D1	S(SM)-UKFL209ED1;HE2309X	C(CM)-UKFL209ED1;HE2309X	1/8	2 15/32	2 3/4	4 7/16	2 1/8	4.4	4.6	6.0
FL209D1	S(SM)-UKFL209SD1;HS2309X	C(CM)-UKFL209SD1;HS2309X								
FL210D1	S(SM)-UKFL210D1;H2310X	C(CM)-UKFL210D1;H2310X	3	65.5	72	120	58	2.3	2.4	3.2
FL210D1	S(SM)-UKFL210SD1;HS2310	C(CM)-UKFL210SD1;HS2310								
FL210D1	S(SM)-UKFL210AD1;HA2310	C(CM)-UKFL210AD1;HA2310	1/8	2 19/32	2 27/32	4 23/32	2 9/32	5.1	5.3	7.1
FL210D1	S(SM)-UKFL210ED1;HE2310X	C(CM)-UKFL210ED1;HE2310X								
FL211D1	S(SM)-UKFL211D1;H2311X	C(CM)-UKFL211D1;H2311X	4	71	75	133	65	3.3	3.4	4.6
FL211D1	S(SM)-UKFL211SD1;HS2311	C(CM)-UKFL211SD1;HS2311								
FL211D1	S(SM)-UKFL211AD1;HA2311	C(CM)-UKFL211AD1;HA2311	5/32	2 25/32	2 15/16	5 1/4	2 9/16	7.3	7.5	10
FL211D1	S(SM)-UKFL211ED1;HE2311XY	C(CM)-UKFL211ED1;HE2311XY								
FL212D1	S(SM)-UKFL212D1;H2312X	C(CM)-UKFL212D1;H2312X	4	80	86	144	70	4.0	4.2	5.2
FL212D1	S(SM)-UKFL212SD1;HS2312	C(CM)-UKFL212SD1;HS2312	5/32	3 5/32	3 3/8	5 21/32	2 3/4	8.8	9.3	11
FL213D1	S(SM)-UKFL213D1;H2313X	C(CM)-UKFL213D1;H2313X	4	83.5	90	157	78	5.2	5.4	6.8
FL213D1	S(SM)-UKFL213AD1;HA2313	C(CM)-UKFL213AD1;HA2313								
FL213D1	S(SM)-UKFL213ED1;HE2313X	C(CM)-UKFL213ED1;HE2313X	5/32	3 9/32	3 17/32	6 3/16	3 1/16	11	12	15
FL213D1	S(SM)-UKFL213SD1;HS2313X	C(CM)-UKFL213SD1;HS2313X								

Flanged units cast housing Adapter type



Pressed steel dust cover type

Open end: **S-UKFL...D1**

Closed end: **SM-UKFL...D1**

Shaft dia. mm inch	Unit number ^{1) 2) 3)}	Nominal dimensions											Bolt size mm inch	Bearing number
		mm					inch							
		H	J	A ₂	A ₁	A	N	L	A ₀	B ₁	F min.			
65 $2\frac{7}{16}$ $2\frac{1}{2}$	UKFL215D1;H2315X UKFL215D1;HA2315 UKFL215D1;HE2315X	275	225	34	22	56	23	165	71	73	84	M20	UK215D1;H2315X UK215D1;HA2315 UK215D1;HE2315X	
		$10\frac{13}{16}$	$8\frac{55}{64}$	$1\frac{11}{32}$	$\frac{7}{8}$	$2\frac{7}{32}$	$\frac{29}{32}$	$6\frac{1}{2}$	$2\frac{51}{64}$	2.874	$3\frac{5}{16}$	$\frac{3}{4}$		
70 $2\frac{11}{16}$ $2\frac{3}{4}$	UKFL216D1;H2316X UKFL216D1;HA2316 UKFL216D1;HE2316X	290	233	34	22	58	25	180	73.5	78	90	M22	UK216D1;H2316X UK216D1;HA2316 UK216D1;HE2316X	
		$11\frac{13}{32}$	$9\frac{11}{64}$	$1\frac{11}{32}$	$\frac{7}{8}$	$2\frac{9}{32}$	$\frac{63}{64}$	$7\frac{3}{32}$	$2\frac{57}{64}$	3.071	$3\frac{17}{32}$	$\frac{7}{8}$		
75 $2\frac{15}{16}$ 3	UKFL217D1;H2317X UKFL217D1;HA2317X UKFL217D1;HE2317X	305	248	36	24	63	25	190	77	82	95	M22	UK217D1;H2317X UK217D1;HA2317X UK217D1;HE2317X	
		12	$9\frac{49}{64}$	$1\frac{27}{64}$	$\frac{15}{16}$	$2\frac{15}{32}$	$\frac{63}{64}$	$7\frac{15}{32}$	$3\frac{1}{32}$	3.228	$3\frac{3}{4}$	$\frac{7}{8}$		
80 $3\frac{3}{16}$	UKFL218D1;H2318X UKFL218D1;HA2318X	320	265	40	24	68	25	205	81.5	86	102	M22	UK218D1;H2318X UK218D1;HA2318X	
		$12\frac{19}{32}$	$10\frac{7}{16}$	$1\frac{37}{64}$	$\frac{15}{16}$	$2\frac{11}{16}$	$\frac{63}{64}$	$8\frac{1}{16}$	$3\frac{13}{64}$	3.386	$4\frac{1}{32}$	$\frac{7}{8}$		

Remarks: 1) These numbers indicate relubricatable type. If maintenance free type is needed, please order without suffix "D1".

2) Adapter number with suffix "X" means a narrow slot type adapter sleeve.

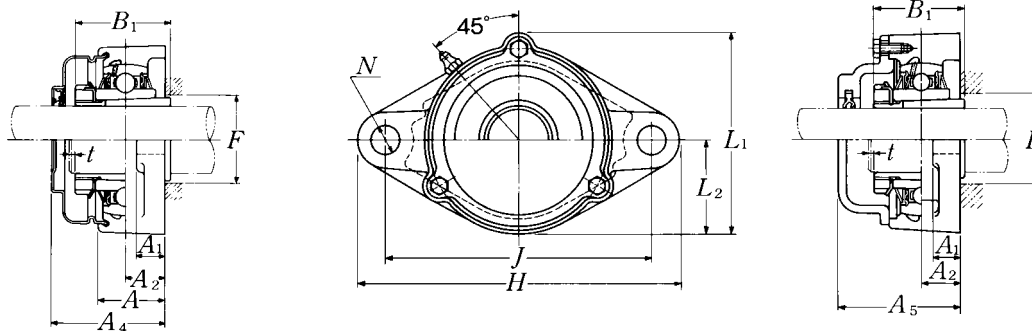
In this case the lock washer with the straight inner prong should be used.

3) For HE2311XY, screw thread pitch different from the standard is applied, because of the thin thread section of sleeve. To distinguish it, a suffix "Y" is added.

4) If the inch series housing units with dust cover are ordered with a closed end, the suffixes E, S or A are not included.

Example: SM-UKFL205D1; HE2305

Note: Please refer to page 25 for size of grease fitting.



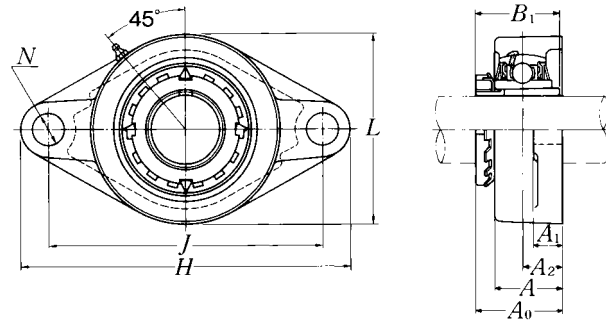
Cast dust cover type

Open end: **C-UKFL...D1**

Closed end: **CM-UKFL...D1**

Housing number	Unit number ⁴⁾ pressed steel dust cover type	Unit number ⁴⁾ cast dust cover type	Nominal dimensions					Mass of unit		
			mm		inch			kg		lb
			t	A ₄	A ₅	L ₁	L ₂	UKFL	S(SM)	C(CM)
FL215D1	—	C(CM)-UKFL215D1;H2315X	4	—	102	169	82	6.4	—	8.3
FL215D1	—	C(CM)-UKFL215AD1;HA2315	5/32	—	4 1/32	6 21/32	3 7/32	14	—	18
FL215D1	—	C(CM)-UKFL215ED1;HE2315X								
FL216D1	—	C(CM)-UKFL216D1;H2316X	4	—	106	183	90	8.6	—	11
FL216D1	—	C(CM)-UKFL216AD1;HA2316	5/32	—	4 3/16	7 7/32	3 17/32	19	—	24
FL216D1	—	C(CM)-UKFL216D1;HE2316X								
FL217D1	—	C(CM)-UKFL217D1;H2317X	5	—	114	192	95	9.8	—	12
FL217D1	—	C(CM)-UKFL217AD1;HA2317X	13/64	—	4 1/2	7 9/16	3 3/4	22	—	26
FL217D1	—	C(CM)-UKFL217ED1;HE2317X								
FL218D1	—	C(CM)-UKFL218D1;H2318X	5	—	122	205	102	12	—	15
FL218D1	—	C(CM)-UKFL218AD1;HA2318X	13/64	—	4 13/16	8 1/16	4 1/32	26	—	33

Flanged units cast housing Adapter type



Shaft dia.	Unit number ^{1) 2) 3)}	Nominal dimensions									Bolt size	Bearing number
		mm			inch			mm	inch			
mm inch		H	J	A ₂	A ₁	A	N	L	A ₀	B ₁	mm inch	
20 3/4	UKFL305D1;H2305X UKFL305D1;HE2305	150 5 29/32	113 4 29/64	16 5/8	13 1/2	29 1 5/32	19 3/4	80 3 5/32	37 1 29/64	35 1.378	M16 5/8	UK305D1;H2305X UK305D1;HE2305
25 7/8 1	UKFL306D1;H2306X UKFL306D1;HS2306 UKFL306D1;HE2306X	180 7 3/32	134 5 9/32	18 45/64	15 19/32	32 1 1/4	23 29/32	90 3 17/32	40.5 1 19/32	38 1.496	M20 3/4	UK306D1;H2306X UK306D1;HS2306 UK306D1;HE2306X
30 1 1/8	UKFL307D1;H2307X UKFL307D1;HS2307	185 7 9/32	141 5 35/64	20 25/32	16 5/8	36 1 13/32	23 29/32	100 3 15/16	45.5 1 51/64	43 1.693	M20 3/4	UK307D1;H2307X UK307D1;HS2307
35 1 1/4 1 3/8	UKFL308D1;H2308X UKFL308D1;HE2308X UKFL308D1;HS2308X	200 7 7/8	158 6 7/32	23 29/32	17 2 1/32	40 1 9/16	23 29/32	112 4 13/32	50 1 31/32	46 1.811	M20 3/4	UK308D1;H2308X UK308D1;HE2308X UK308D1;HS2308X
40 1 7/16 1 1/2 1 5/8	UKFL309D1;H2309X UKFL309D1;HA2309 UKFL309D1;HE2309X UKFL309D1;HS2309X	230 9 1/16	177 6 31/32	25 63/64	18 23/32	44 1 23/32	25 63/64	125 4 29/32	54.5 2 9/64	50 1.969	M22 7/8	UK309D1;H2309X UK309D1;HA2309 UK309D1;HE2309X UK309D1;HS2309X
45 1 5/8 1 11/16 1 3/4	UKFL310D1;H2310X UKFL310D1;HS2310 UKFL310D1;HA2310 UKFL310D1;HE2310X	240 9 7/16	187 7 23/64	28 1 7/64	19 3/4	48 1 7/8	25 63/64	140 5 1/2	60.5 2 3/8	55 2.165	M22 7/8	UK310D1;H2310X UK310D1;HS2310 UK310D1;HA2310 UK310D1;HE2310X
50 1 7/8 1 15/16 2	UKFL311D1;H2311X UKFL311D1;HS2311 UKFL311D1;HA2311 UKFL311D1;HE2311XY	250 9 27/32	198 7 51/64	30 1 3/16	20 25/32	52 2 1/16	25 63/64	150 5 29/32	64 2 33/64	59 2.323	M22 7/8	UK311D1;H2311X UK311D1;HS2311 UK311D1;HA2311 UK311D1;HE2311XY
55 2 1/8	UKFL312D1;H2312X UKFL312D1;HS2312	270 10 5/8	212 8 11/32	33 1 19/64	22 7/8	56 2 7/32	31 1 7/32	160 6 5/16	69.5 2 47/64	62 2.441	M27 1	UK312D1;H2312X UK312D1;HS2312
60 2 3/16 2 1/4 2 3/8	UKFL313D1;H2313X UKFL313D1;HA2313 UKFL313D1;HE2313X UKFL313D1;HS2313X	295 11 5/8	240 9 29/64	33 1 19/64	25 3 1/32	58 2 9/32	31 1 7/32	175 6 7/8	71.5 2 13/16	65 2.559	M27 1	UK313D1;H2313X UK313D1;HA2313 UK313D1;HE2313X UK313D1;HS2313X

Remarks: 1) These numbers indicate relubricatable type. If maintenance free type is needed, please order without suffix "D1".

2) Adapter number with suffix "X" means a narrow slot type adapter sleeve.

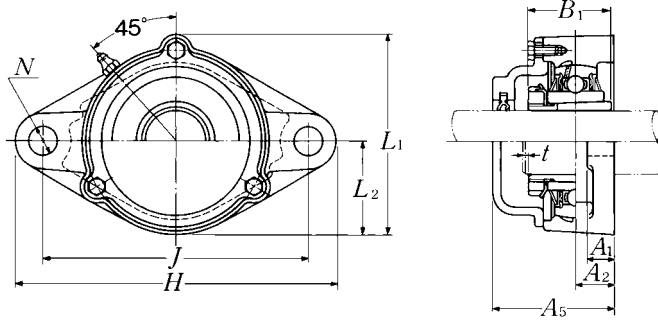
In this case the lock washer with the straight inner prong should be used.

3) For HE2311XY, screw thread pitch different from the standard is applied, because of the thin thread section of sleeve. To distinguish it, a suffix "Y" is added.

4) If the inch series housing units with dust cover are ordered with a closed end, the suffixes E, S or A are not included.

Example: CM-UKFL305D1; HE2305

Note: Please refer to page 25 for size of grease fitting.



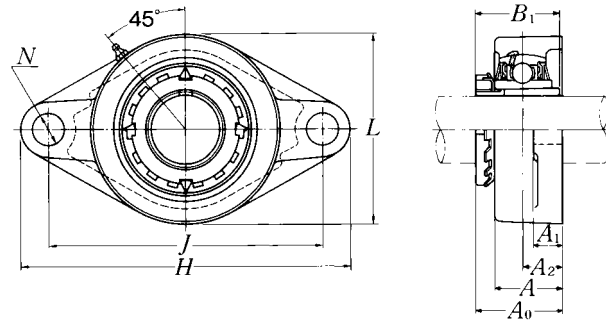
Cast dust cover type

Open end: **C-UKFL...D1**

Closed end: **CM-UKFL...D1**

Housing number	Unit number ⁴⁾ cast dust cover type	Nominal dimensions				Mass of unit	
		t max.	mm	inch	L ₂	kg	lb
			A ₅	L ₁		UKFL	C(CM)
FL305D1	C(CM)-UKFL305D1;H2305X	2	56	86	40	1.1	1.6
FL305D1	C(CM)-UKFL305ED1;HE2305	5/64	27/32	33/8	19/16	2.4	3.5
FL306D1	C(CM)-UKFL306D1;H2306X	2	60	101	45	1.5	1.9
FL306D1	C(CM)-UKFL306SD1;HS2306	5/64	23/8	331/32	125/32	3.3	4.2
FL306D1	C(CM)-UKFL306ED1;HE2306X						
FL307D1	C(CM)-UKFL307D1;H2307X	3	68	110	50	1.9	2.4
FL307D1	C(CM)-UKFL307SD1;HS2307	1/8	211/16	411/32	131/32	4.2	5.3
FL308D1	C(CM)-UKFL308D1;H2308X	3	76	122	56	2.5	3.3
FL308D1	C(CM)-UKFL308ED1;HE2308X	1/8	3	413/16	27/32	5.5	7.3
FL308D1	C(CM)-UKFL308D1;HS2308X						
FL309D1	C(CM)-UKFL309D1;H2309X	3	80	135	62	3.5	4.4
FL309D1	C(CM)-UKFL309AD1;HA2309						
FL309D1	C(CM)-UKFL309ED1;HE2309X	1/8	35/32	55/16	27/16	7.7	9.7
FL309D1	C(CM)-UKFL309SD1;HS2309X						
FL310D1	C(CM)-UKFL310D1;H2310X	3	88	152	70	4.4	5.4
FL310D1	C(CM)-UKFL310SD1;HS2310						
FL310D1	C(CM)-UKFL310AD1;HA2310	1/8	315/32	531/32	23/4	9.7	12
FL310D1	C(CM)-UKFL310ED1;HE2310X						
FL311D1	C(CM)-UKFL311D1;H2311X	4	92	162	75	5.1	6.3
FL311D1	C(CM)-UKFL311SD1;HS2311						
FL311D1	C(CM)-UKFL311AD1;HA2311	5/32	35/8	63/8	215/16	11	14
FL311D1	C(CM)-UKFL311ED1;HE2311XY						
FL312D1	C(CM)-UKFL312D1;H2312X	4	100	175	80	6.0	7.7
FL312D1	C(CM)-UKFL312SD1;HS2312	5/32	315/16	67/8	35/32	13	17
FL313D1	C(CM)-UKFL313D1;H2313X	4	103	189	88	7.6	9.8
FL313D1	C(CM)-UKFL313AD1;HA2313						
FL313D1	C(CM)-UKFL313ED1;HE2313X	5/32	41/16	77/16	315/32	17	22
FL313D1	C(CM)-UKFL313SD1;HS2313X						

Flanged units cast housing Adapter type



Shaft dia.	Unit number ^{1) 2) 3)}	Nominal dimensions										Bolt size	Bearing number
		mm					inch						
		H	J	A ₂	A ₁	A	N	L	A ₀	B ₁			
65 2 ⁷ / ₁₆ 2 ¹ / ₂	UKFL315D1;H2315X UKFL315D1;HA2315 UKFL315D1;HE2315X	320	260	39	30	66	35	195	81.5	73	M30	UK315D1;H2315X UK315D1;HA2315 UK315D1;HE2315X	
		12 ¹⁹ / ₃₂	10 ¹⁵ / ₆₄	1 ¹⁷ / ₃₂	1 ³ / ₁₆	2 ¹⁹ / ₃₂	1 ³ / ₈	7 ¹¹ / ₁₆	3 ¹³ / ₆₄	2.874	1 ¹ / ₈		
70 2 ¹¹ / ₁₆ 2 ³ / ₄	UKFL316D1;H2316X UKFL316D1;HA2316 UKFL316D1;HE2316X	355	285	38	32	68	38	210	84	78	M33	UK316D1;H2316X UK316D1;HA2316 UK316D1;HE2316X	
		13 ³¹ / ₃₂	11 ⁷ / ₃₂	1 ¹ / ₂	1 ¹ / ₄	2 ¹¹ / ₁₆	1 ¹ / ₂	8 ⁹ / ₃₂	3 ⁵ / ₁₆	3.071	1 ¹ / ₄		
75 2 ¹⁵ / ₁₆ 3	UKFL317D1;H2317X UKFL317D1;HA2317X UKFL317D1;HE2317X	370	300	44	32	74	38	220	92	82	M33	UK317D1;H2317X UK317D1;HA2317X UK317D1;HE2317X	
		14 ⁹ / ₁₆	11 ¹³ / ₁₆	1 ⁴⁷ / ₆₄	1 ¹ / ₄	2 ²⁹ / ₃₂	1 ¹ / ₂	8 ²¹ / ₃₂	3 ⁵ / ₈	3.228	1 ¹ / ₄		
80 3 ³ / ₁₆	UKFL318D1;H2318X UKFL318D1;HA2318X	385	315	44	36	76	38	235	94	86	M33	UK318D1;H2318X UK318D1;HA2318X	
		15 ⁵ / ₃₂	12 ¹³ / ₃₂	1 ⁴⁷ / ₆₄	1 ¹³ / ₃₂	3	1 ¹ / ₂	9 ¹ / ₄	3 ⁴⁵ / ₆₄	3.386	1 ¹ / ₄		
85 3 ¹ / ₄	UKFL319D1;H2319X UKFL319D1;HE2319X	405	330	59	40	94	41	250	111.5	90	M36	UK319D1;H2319X UK319D1;HE2319X	
		15 ¹⁵ / ₁₆	12 ⁶³ / ₆₄	2 ²¹ / ₆₄	1 ⁹ / ₁₆	3 ¹¹ / ₁₆	1 ³⁹ / ₆₄	9 ²⁷ / ₃₂	4 ²⁵ / ₆₄	3.543	1 ³ / ₈		
90 3 ⁷ / ₁₆ 3 ¹ / ₂	UKFL320D1;H2320X UKFL320D1;HA2320 UKFL320D1;HE2320X	440	360	59	40	94	44	270	115.5	97	M39	UK320D1;H2320X UK320D1;HA2320 UK320D1;HE2320X	
		17 ⁵ / ₁₆	14 ¹¹ / ₆₄	2 ²¹ / ₆₄	1 ⁹ / ₁₆	3 ¹¹ / ₁₆	1 ⁴⁷ / ₆₄	10 ⁵ / ₈	4 ³⁵ / ₆₄	3.819	1 ¹ / ₂		
100	UKFL322D1;H2322X	470	390	60	42	96	44	300	121	105	M39	UK322D1;H2322X	
110	UKFL324D1;H2324X	520	430	65	48	110	47	330	130	112	M42	UK324D1;H2324X	
115	UKFL326D1;H2326	550	460	65	50	115	47	360	133	121	M42	UK326D1;H2326	
125	UKFL328D1;H2328	600	500	75	60	125	51	400	146.5	131	M45	UK328D1;H2328	

Remarks: 1) These numbers indicate relubricatable type. If maintenance free type is needed, please order without suffix "D1".

2) Adapter number with suffix "X" means a narrow slot type adapter sleeve.

In this case the lock washer with the straight inner prong should be used.

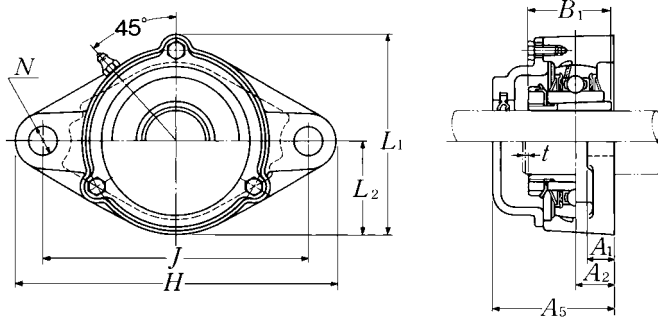
3) For HE2311XY, screw thread pitch different from the standard is applied, because of the thin thread section of sleeve.

To distinguish it, a suffix "Y" is added.

4) If the inch series housing units with dust cover are ordered with a closed end, the suffixes E, S or A are not included.

Example: CM-UKFL305D1; HE2305

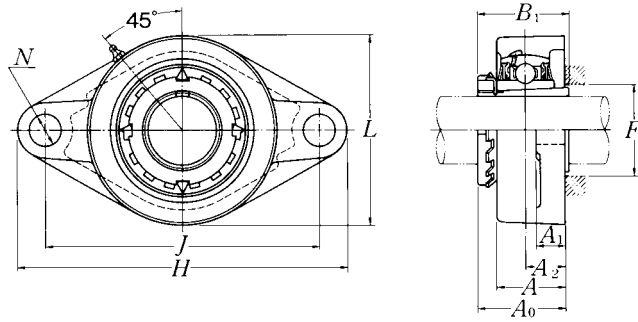
Note: Please refer to page 25 for size of grease fitting.



Cast dust cover type
 Open end: **C-UKFL...D1**
 Closed end: **CM-UKFL...D1**

Housing number	Unit number ⁴⁾ cast dust cover type	Nominal dimensions				Mass of unit	
		t max.	mm	inch	L ₂	kg	lb
			A ₅	L ₁		UKFL	C(CM)
FL315D1	C(CM)-UKFL315D1;H2315X	4	114	210	98	10	13
FL315D1	C(CM)-UKFL315AD1;HA2315	5/32	4 1/2	8 9/32	3 27/32	22	29
FL315D1	C(CM)-UKFL315ED1;HE2315X						
FL316D1	C(CM)-UKFL316D1;H2316X	4	116	222	105	13	17
FL316D1	C(CM)-UKFL316AD1;HA2316	5/32	4 9/16	8 3/4	4 1/8	29	37
FL316D1	C(CM)-UKFL316D1;HE2316X						
FL317D1	C(CM)-UKFL317D1;H2317X	5	127	234	110	15	18
FL317D1	C(CM)-UKFL317AD1;HA2317X	13/64	5	9 7/32	4 11/32	33	40
FL317D1	C(CM)-UKFL317ED1;HE2317X						
FL318D1	C(CM)-UKFL318D1;H2318X	5	129	247	118	18	21
FL318D1	C(CM)-UKFL318AD1;HA2318X	13/64	5 3/32	9 23/32	4 21/32	40	46
FL319D1	C(CM)-UKFL319D1;H2319X	5	149	260	125	22	27
FL319D1	C(CM)-UKFL319ED1;HE2319X	13/64	5 7/8	10 1/4	4 29/32	49	60
FL320D1	C(CM)-UKFL320D1;H2320X	5	154	280	135	27	31
FL320D1	C(CM)-UKFL320AD1;HA2320	13/64	6 1/16	11 1/32	5 5/16	60	68
FL320D1	C(CM)-UKFL320ED1;HE2320X						
FL322D1	C(CM)-UKFL322D1;H2322X	5	160	315	150	34	41
FL324D1	C(CM)-UKFL324D1;H2324X	5	172	342	165	47	52
FL326D1	C(CM)-UKFL326D1;H2326	6	178	376	180	58	65
FL328D1	C(CM)-UKFL328D1;H2328	6	192	410	200	82	90

Flanged units cast housing
Adapter type



Shaft dia. mm inch	Unit number ^{1) 2)}	Nominal dimensions										Bolt size mm inch
		H	J	A ₂	A ₁	A	N	L	A ₀	B ₁	F min.	
20 3/4	UKFLX05D1;H2305X UKFLX05D1;HE2305	141 5 ⁹ / ₁₆	117 4 ³⁹ / ₆₄	18 4 ⁵ / ₆₄	13 1/2	30 1 ³ / ₁₆	12 15 ¹⁵ / ₃₂	83 3 ⁹ / ₃₂	39 1 ¹⁷ / ₃₂	35 1.378	30 1 ³ / ₁₆	M10 3/8
25 7/8 1	UKFLX06D1;H2306X UKFLX06D1;HS2306 UKFLX06D1;HE2306X	156 6 ⁵ / ₃₂	130 5 ¹ / ₈	19 3/4	15 1 ¹⁹ / ₃₂	34 1 ¹¹ / ₃₂	16 5/8	95 3 ³ / ₄	41.5 1 ⁴¹ / ₆₄	38 1.496	36 1 ¹³ / ₃₂	M14 1/2
30 1 1/8	UKFLX07D1;H2307X UKFLX07D1;HS2307	171 6 ²³ / ₃₂	144 5 ⁴³ / ₆₄	21 5 ⁵³ / ₆₄	16 5/8	38 1 ¹ / ₂	16 5/8	105 4 ¹ / ₈	45.5 1 ⁵¹ / ₆₄	43 1.693	40 1 ⁹ / ₁₆	M14 1/2
35 1 1/4 1 3/8	UKFLX08D1;H2308X UKFLX08D1;HE2308X UKFLX08D1;HS2308X	179 7 ¹ / ₁₆	148 5 ⁵³ / ₆₄	22 5 ⁵⁵ / ₆₄	16 5/8	40 1 ⁹ / ₁₆	16 5/8	111 4 ³ / ₈	47.5 1 ⁷ / ₈	46 1.811	46 1 ¹³ / ₁₆	M14 1/2
40 1 7/16 1 1/2 1 5/8	UKFLX09D1;H2309X UKFLX09D1;HA2309 UKFLX09D1;HE2309X UKFLX09D1;HS2309X	189 7 ⁷ / ₁₆	157 6 ³ / ₁₆	23 2 ²⁹ / ₃₂	16 5/8	40 1 ⁹ / ₁₆	16 5/8	116 4 ⁹ / ₁₆	50 1 ³¹ / ₃₂	50 1.969	52 2 ¹ / ₁₆	M14 1/2
45 1 5/8 1 11/16 1 3/4	UKFLX10D1;H2310X UKFLX10D1;HS2310 UKFLX10D1;HA2310 UKFLX10D1;HE2310X	216 8 ¹ / ₂	184 7 ¹ / ₄	26 1 ¹ / ₃₂	18 2 ²³ / ₃₂	44 1 ²³ / ₃₂	19 3/4	133 5 ¹ / ₄	55.5 2 ³ / ₁₆	55 2.165	57 2 ¹ / ₄	M16 5/8

Remarks: 1) These numbers indicate relubricatable type. If maintenance free type is needed, please order without suffix "D1".

2) Adapter number with suffix "X" means a narrow slot type adapter sleeve.

In this case the lock washer with the straight inner prong should be used.

Note: Please refer to page 25 for size of grease fitting.

Bearing number	Housing number	Mass of unit	
		kg	lb
UKX05D1;H2305X	FLX05D1	1.0	
UKX05D1;HE2305	FLX05D1	2.2	
UKX06D1;H2306X	FLX06D1	1.3	
UKX06D1;HS2306	FLX06D1	2.9	
UKX06D1;HE2306X	FLX06D1		
UKX07D1;H2307X	FLX07D1	2.0	
UKX07D1;HS2307	FLX07D1	4.4	
UKX08D1;H2308X	FLX08D1	2.1	
UKX08D1;HE2308X	FLX08D1	4.6	
UKX08D1;HS2308X	FLX08D1		
UKX09D1;H2309X	FLX09D1	2.4	
UKX09D1;HA2309	FLX09D1		
UKX09D1;HE2309X	FLX09D1	5.3	
UKX09D1;HS2309X	FLX09D1		
UKX10D1;H2310X	FLX10D1	3.3	
UKX10D1;HS2310	FLX10D1		
UKX10D1;HA2310	FLX10D1	7.3	
UKX10D1;HE2310X	FLX10D1		