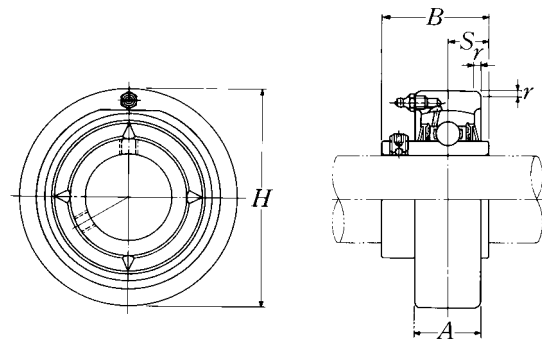


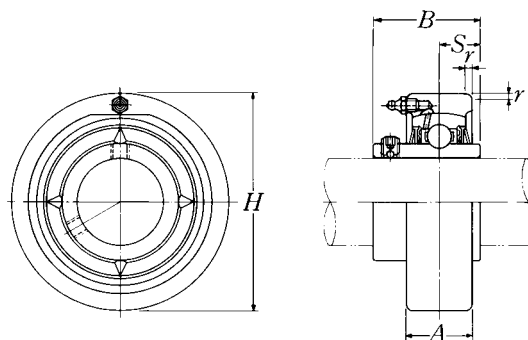
Cylindrical cartridge units cast housing Set screw type



Shaft dia.	Unit number ¹⁾	Nominal dimensions					Bearing number ¹⁾	Housing number	Mass of unit
		H	A	r	B	S			
mm inch		mm	inch					kg lb	
12	UCC201D1	72	20	2	31	12.7	UC201D1	C204D1	0.6
$\frac{1}{2}$	UCC201-008D1	2.8346	$\frac{25}{32}$	0.079	1.2205	0.500	UC201-008D1	C204D1	1.3
15	UCC202D1	72	20	2	31	12.7	UC202D1	C204D1	0.6
$\frac{9}{16}$	UCC202-009D1	2.8346	$\frac{25}{32}$	0.079	1.2205	0.500	UC202-009D1	C204D1	1.3
$\frac{5}{8}$	UCC202-010D1						UC202-010D1	C204D1	
17	UCC203D1	72	20	2	31	12.7	UC203D1	C204D1	0.5
$\frac{11}{16}$	UCC203-011D1	2.8346	$\frac{25}{32}$	0.079	1.2205	0.500	UC203-011D1	C204D1	1.1
20	UCC204D1	72	20	2	31	12.7	UC204D1	C204D1	0.5
$\frac{3}{4}$	UCC204-012D1	2.8346	$\frac{25}{32}$	0.079	1.2205	0.500	UC204-012D1	C204D1	1.1
25	UCC205D1	80	22	2	34.1	14.3	UC205D1	C205D1	0.7
$\frac{13}{16}$	UCC205-013D1						UC205-013D1	C205D1	
$\frac{7}{8}$	UCC205-014D1	3.1496	$\frac{55}{64}$	0.079	1.3425	0.563	UC205-014D1	C205D1	1.5
$\frac{15}{16}$	UCC205-015D1						UC205-015D1	C205D1	
1	UCC205-100D1						UC205-100D1	C205D1	
30	UCC206D1	85	27	2	38.1	15.9	UC206D1	C206D1	0.9
$\frac{1}{16}$	UCC206-101D1						UC206-101D1	C206D1	
$\frac{1}{8}$	UCC206-102D1	3.3465	$\frac{1}{16}$	0.079	1.5000	0.626	UC206-102D1	C206D1	2.0
$\frac{3}{16}$	UCC206-103D1						UC206-103D1	C206D1	
$\frac{1}{4}$	UCC206-104D1						UC206-104D1	C206D1	
35	UCC207D1	90	28	2	42.9	17.5	UC207D1	C207D1	1.0
$\frac{1}{4}$	UCC207-104D1						UC207-104D1	C207D1	
$\frac{5}{16}$	UCC207-105D1	3.5433	$\frac{1}{64}$	0.079	1.6890	0.689	UC207-105D1	C207D1	2.2
$\frac{3}{8}$	UCC207-106D1						UC207-106D1	C207D1	
$\frac{7}{16}$	UCC207-107D1						UC207-107D1	C207D1	
40	UCC208D1	100	30	2.5	49.2	19	UC208D1	C208D1	1.3
$\frac{1}{2}$	UCC208-108D1	3.9370	$\frac{3}{16}$	0.098	1.9370	0.748	UC208-108D1	C208D1	2.9
$\frac{9}{16}$	UCC208-109D1						UC208-109D1	C208D1	
45	UCC209D1	110	31	2.5	49.2	19	UC209D1	C209D1	1.6
$\frac{5}{8}$	UCC209-110D1						UC209-110D1	C209D1	
$\frac{11}{16}$	UCC209-111D1	4.3307	$\frac{1}{32}$	0.098	1.9370	0.748	UC209-111D1	C209D1	3.5
$\frac{3}{4}$	UCC209-112D1						UC209-112D1	C209D1	

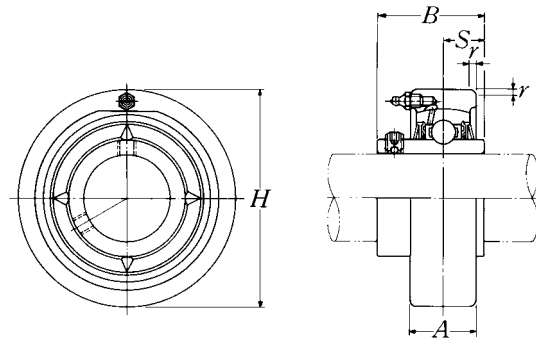
Remarks: 1) These numbers indicate relubricatable type. If maintenance free type is needed, please order without suffix "D1".

Note: Please refer to page 25 for size of grease fitting.



Shaft dia.	Unit number ¹⁾	Nominal dimensions					Bearing number ¹⁾	Housing number	Mass of unit
		mm		inch					
mm inch		H	A	r	B	S			kg lb
50	UCC210D1	120	33	2.5	51.6	19	UC210D1	C210D1	2.0
$1\frac{13}{16}$	UCC210-113D1						UC210-113D1	C210D1	
$1\frac{7}{8}$	UCC210-114D1						UC210-114D1	C210D1	
$1\frac{15}{16}$	UCC210-115D1	4.7244	$1\frac{19}{64}$	0.098	2.0315	0.748	UC210-115D1	C210D1	4.4
2	UCC210-200D1						UC210-200D1	C210D1	
55	UCC211D1	125	35	2.5	55.6	22.2	UC211D1	C211D1	2.2
2	UCC211-200D1						UC211-200D1	C211D1	
$2\frac{1}{16}$	UCC211-201D1						UC211-201D1	C211D1	
$2\frac{1}{8}$	UCC211-202D1	4.9213	$1\frac{3}{8}$	0.098	2.1890	0.874	UC211-202D1	C211D1	4.9
$2\frac{3}{16}$	UCC211-203D1						UC211-203D1	C211D1	
60	UCC212D1	130	38	2.5	65.1	25.4	UC212D1	C212D1	2.6
$2\frac{1}{4}$	UCC212-204D1						UC212-204D1	C212D1	
$2\frac{5}{16}$	UCC212-205D1						UC212-205D1	C212D1	
$2\frac{3}{8}$	UCC212-206D1	5.1181	$1\frac{1}{2}$	0.098	2.5630	1.000	UC212-206D1	C212D1	5.7
$2\frac{7}{16}$	UCC212-207D1						UC212-207D1	C212D1	
65	UCC213D1	140	40	3	65.1	25.4	UC213D1	C213D1	3.1
$2\frac{1}{2}$	UCC213-208D1						UC213-208D1	C213D1	
$2\frac{9}{16}$	UCC213-209D1	5.5118	$1\frac{37}{64}$	0.118	2.5630	1.000	UC213-209D1	C213D1	6.8

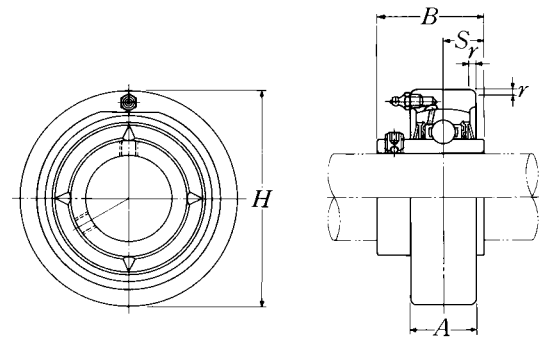
Cylindrical cartridge units cast housing Set screw type



Shaft dia. mm inch	Unit number ¹⁾	Nominal dimensions					Bearing number ¹⁾	Housing number	Mass of unit kg lb
		H	A	r	B	S			
25 1 ³ / ₁₆	UCC305D1	90	26	2.5	38	15	UC305D1	C305D1	1.1
7 / ₈	UCC305-013D1	3.5433	1 ¹ / ₃₂	0.098	1.4961	0.591	UC305-013D1	C305D1	2.4
15 / ₁₆	UCC305-014D1						UC305-014D1	C305D1	
1	UCC305-015D1						UC305-015D1	C305D1	
	UCC305-100D1						UC305-100D1	C305D1	
30 1 ¹ / ₁₆	UCC306D1	100	28	2.5	43	17	UC306D1	C306D1	1.4
1 / ₈	UCC306-101D1	3.9370	1 ⁷ / ₆₄	0.098	1.6929	0.669	UC306-101D1	C306D1	3.1
1 / ₈	UCC306-102D1						UC306-102D1	C306D1	
1 / ₈	UCC306-103D1						UC306-103D1	C306D1	
35 1 ¹ / ₄	UCC307D1	110	32	3	48	19	UC307D1	C307D1	1.8
1 / ₄	UCC307-104D1	4.3307	1 ¹⁷ / ₆₄	0.118	1.8898	0.748	UC307-104D1	C307D1	4.0
1 / ₄	UCC307-105D1						UC307-105D1	C307D1	
1 / ₄	UCC307-106D1						UC307-106D1	C307D1	
1 / ₄	UCC307-107D1						UC307-107D1	C307D1	
40 1 ¹ / ₂	UCC308D1	120	34	3	52	19	UC308D1	C308D1	2.2
1 / ₂	UCC308-108D1	4.7244	1 ¹¹ / ₃₂	0.118	2.0472	0.748	UC308-108D1	C308D1	4.9
1 / ₂	UCC308-109D1						UC308-109D1	C308D1	
45 1 ⁵ / ₈	UCC309D1	130	38	3.5	57	22	UC309D1	C309D1	2.7
1 / ₈	UCC309-110D1	5.1181	1 ¹ / ₂	0.138	2.2441	0.866	UC309-110D1	C309D1	6.0
1 / ₈	UCC309-111D1						UC309-111D1	C309D1	
1 / ₈	UCC309-112D1						UC309-112D1	C309D1	
50 1 ¹³ / ₁₆	UCC310D1	140	40	3.5	61	22	UC310D1	C310D1	3.3
1 / ₈	UCC310-113D1	5.5118	1 ³⁷ / ₆₄	0.138	2.4016	0.866	UC310-113D1	C310D1	7.3
1 / ₈	UCC310-114D1						UC310-114D1	C310D1	
1 / ₈	UCC310-115D1						UC310-115D1	C310D1	
55 2	UCC311D1	150	44	3.5	66	25	UC311D1	C311D1	3.9
2	UCC311-200D1	5.9055	1 ⁴⁷ / ₆₄	0.138	2.5984	0.984	UC311-200D1	C311D1	8.6
2 / ₁₆	UCC311-201D1						UC311-201D1	C311D1	
2 / ₁₆	UCC311-202D1						UC311-202D1	C311D1	
2 / ₁₆	UCC311-203D1						UC311-203D1	C311D1	

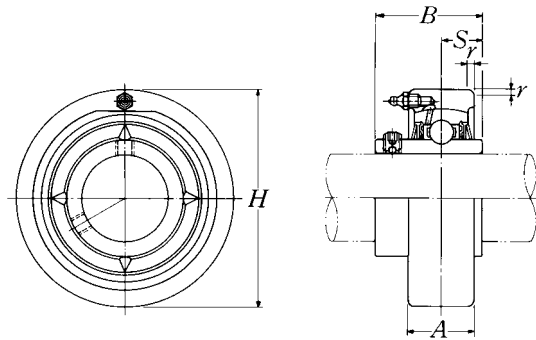
Remarks: 1) These numbers indicate relubricatable type. If maintenance free type is needed, please order without suffix "D1".

Note: Please refer to page 25 for size of grease fitting.



Shaft dia.	Unit number ¹⁾	Nominal dimensions					Bearing number ¹⁾	Housing number	Mass of unit
		<i>H</i>	<i>A</i>	<i>r</i>	<i>B</i>	<i>S</i>			
mm inch		mm	inch					kg lb	
60	UCC312D1	160	46	3.5	71	26	UC312D1	C312D1	4.8
2 1/4	UCC312-204D1						UC312-204D1	C312D1	
2 5/16	UCC312-205D1	6.2992	1 13/16	0.138	2.7953	1.024	UC312-205D1	C312D1	11
2 3/8	UCC312-206D1						UC312-206D1	C312D1	
2 7/16	UCC312-207D1						UC312-207D1	C312D1	
65	UCC313D1	170	50	3.5	75	30	UC313D1	C313D1	5.8
2 1/2	UCC313-208D1	6.6929	1 31/32	0.138	2.9528	1.181	UC313-208D1	C313D1	13
2 9/16	UCC313-209D1						UC313-209D1	C313D1	
70	UCC314D1	180	52	4	78	33	UC314D1	C314D1	6.6
2 5/8	UCC314-210D1						UC314-210D1	C314D1	
2 11/16	UCC314-211D1	7.0866	2 3/64	0.157	3.0709	1.299	UC314-211D1	C314D1	15
2 3/4	UCC314-212D1						UC314-212D1	C314D1	
75	UCC315D1	190	55	4	82	32	UC315D1	C315D1	7.8
2 13/16	UCC315-213D1						UC315-213D1	C315D1	
2 7/8	UCC315-214D1	7.4803	2 11/64	0.157	3.2283	1.260	UC315-214D1	C315D1	17
2 15/16	UCC315-215D1						UC315-215D1	C315D1	
3	UCC315-300D1						UC315-300D1	C315D1	
80	UCC316D1	200	60	4	86	34	UC316D1	C316D1	9.0
3 1/16	UCC316-301D1						UC316-301D1	C316D1	
3 1/8	UCC316-302D1	7.8740	2 23/64	0.157	3.3858	1.339	UC316-302D1	C316D1	20
3 3/16	UCC316-303D1						UC316-303D1	C316D1	
85	UCC317D1	215	64	4	96	40	UC317D1	C317D1	11
3 1/4	UCC317-304D1						UC317-304D1	C317D1	
3 5/16	UCC317-305D1	8.4646	2 33/64	0.157	3.7795	1.575	UC317-305D1	C317D1	24
3 7/16	UCC317-307D1						UC317-307D1	C317D1	
90	UCC318D1	225	66	4	96	40	UC318D1	C318D1	12
3 1/2	UCC318-308D1	8.8583	2 19/32	0.157	3.7795	1.575	UC318-308D1	C318D1	26
95	UCC319D1	240	72	4	103	41	UC319D1	C319D1	15
3 5/8	UCC319-310D1						UC319-310D1	C319D1	
3 11/16	UCC319-311D1	9.4488	2 53/64	0.157	4.0551	1.614	UC319-311D1	C319D1	33
3 3/4	UCC319-312D1						UC319-312D1	C319D1	

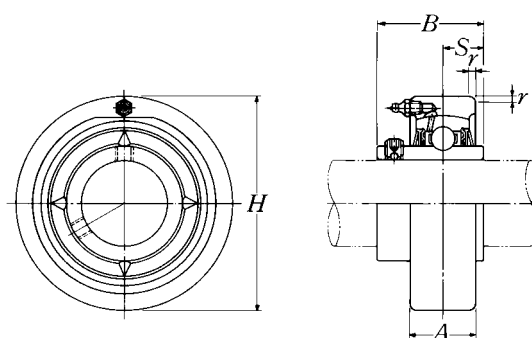
Cylindrical cartridge units cast housing Set screw type



Shaft dia.	Unit number ¹⁾	Nominal dimensions					Bearing number ¹⁾	Housing number	Mass of unit
		<i>H</i>	<i>A</i>	<i>r</i>	<i>B</i>	<i>S</i>			
mm inch			mm	inch				kg lb	
100	UCC320D1	260	75	4	108	42	UC320D1	C320D1	19
3 ¹³ / ₁₆	UCC320-313D1	10.2362	2 ⁶¹ / ₆₄	0.157	4.2520	1.654	UC320-313D1	C320D1	42
3 ⁷ / ₈	UCC320-314D1						UC320-314D1	C320D1	
3 ¹⁵ / ₁₆	UCC320-315D1						UC320-315D1	C320D1	
4	UCC320-400D1						UC320-400D1	C320D1	
105	UCC321D1	260	75	4	112	44	UC321D1	C321D1	19
110	UCC322D1	300	80	5	117	46	UC322D1	C322D1	28
120	UCC324D1	320	90	5	126	51	UC324D1	C324D1	35
130	UCC326D1	340	100	5	135	54	UC326D1	C326D1	42
140	UCC328D1	360	100	5	145	59	UC328D1	C328D1	49

Remarks: 1) These numbers indicate relubricatable type. If maintenance free type is needed, please order without suffix "D1".
Note: Please refer to page 25 for size of grease fitting.

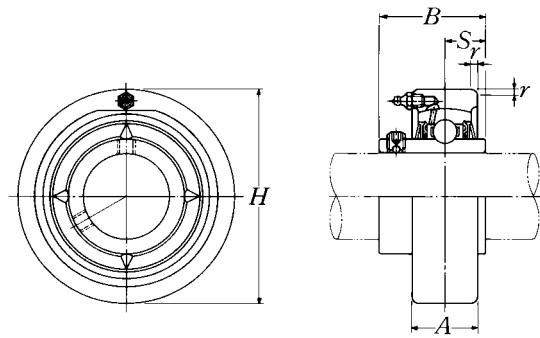
Cylindrical cartridge units cast housing
Set screw type



Shaft dia.	Unit number ¹⁾	Nominal dimensions					Bearing number ¹⁾	Housing number	Mass of unit
		mm		inch					
mm inch		H	A	r	B	S			kg lb
25	UCCX05D1	90	27	2	38.1	15.9	UCX05D1	CX05D1	1.1
$1\frac{3}{16}$	UCCX05-013D1						UCX05-013D1	CX05D1	
$\frac{7}{8}$	UCCX05-014D1	3.5433	$1\frac{1}{16}$	0.079	1.5000	0.626	UCX05-014D1	CX05D1	2.4
$1\frac{5}{16}$	UCCX05-015D1						UCX05-015D1	CX05D1	
1	UCCX05-100D1						UCX05-100D1	CX05D1	
30	UCCX06D1	100	30	2.5	42.9	17.5	UCX06D1	CX06D1	1.6
$1\frac{1}{16}$	UCCX06-101D1						UCX06-101D1	CX06D1	
$1\frac{1}{8}$	UCCX06-102D1	3.9370	$1\frac{3}{16}$	0.098	1.6890	0.689	UCX06-102D1	CX06D1	3.5
$1\frac{3}{16}$	UCCX06-103D1						UCX06-103D1	CX06D1	
$1\frac{1}{4}$	UCCX06-104D1						UC207-104D1	CX06D1	
35	UCCX07D1	110	34	2.5	49.2	19	UCX07D1	CX07D1	2.0
$1\frac{5}{16}$	UCCX07-105D1						UCX07-105D1	CX07D1	
$1\frac{3}{8}$	UCCX07-106D1	4.3307	$1\frac{1}{32}$	0.098	1.9370	0.748	UCX07-106D1	CX07D1	4.4
$1\frac{7}{16}$	UCCX07-107D1						UCX07-107D1	CX07D1	
40	UCCX08D1	120	38	2.5	49.2	19	UCX08D1	CX08D1	2.5
$1\frac{1}{2}$	UCCX08-108D1	4.7244	$1\frac{1}{2}$	0.098	1.9370	0.748	UCX08-108D1	CX08D1	5.5
$1\frac{9}{16}$	UCCX08-109D1						UCX08-109D1	CX08D1	
45	UCCX09D1	120	38	2.5	51.6	19	UCX09D1	CX09D1	2.4
$1\frac{5}{8}$	UCCX09-110D1						UCX09-110D1	CX09D1	
$1\frac{11}{16}$	UCCX09-111D1	4.7244	$1\frac{1}{2}$	0.098	2.0315	0.748	UCX09-111D1	CX09D1	5.3
$1\frac{3}{4}$	UCCX09-112D1						UCX09-112D1	CX09D1	
$1\frac{13}{16}$	UCCX09-113D1						UC210-113D1	CX09D1	
50	UCCX10D1	130	40	2.5	55.6	22.2	UCX10D1	CX10D1	3.0
$1\frac{7}{8}$	UCCX10-114D1						UCX10-114D1	CX10D1	
$1\frac{15}{16}$	UCCX10-115D1	5.1181	$1\frac{37}{64}$	0.098	2.1890	0.874	UCX10-115D1	CX10D1	6.6
2	UCCX10-200D1						UC211-200D1	CX10D1	

Remarks: 1) These numbers indicate relubricatable type. If maintenance free type is needed, please order without suffix "D1".
 Note: Please refer to page 25 for size of grease fitting.

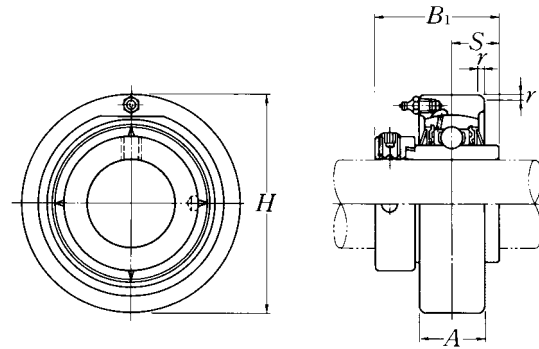
Cylindrical cartridge units cast housing
Set screw type



Shaft dia.	Unit number ¹⁾	Nominal dimensions					Bearing number ¹⁾	Housing number	Mass of unit
		<i>H</i>	<i>A</i>	<i>r</i>	<i>B</i>	<i>S</i>			
mm inch			mm	inch				kg lb	
55	UCCX11D1	150	42	3	65.1	25.4	UCX11D1	CX11D1	4.4
$2\frac{1}{16}$	UCCX11-201D1						UCX11-201D1	CX11D1	
$2\frac{1}{8}$	UCCX11-202D1						UCX11-202D1	CX11D1	
$2\frac{3}{16}$	UCCX11-203D1	5.9055	$1\frac{21}{32}$	0.118	2.5630	1.000	UCX11-203D1	CX11D1	9.7
$2\frac{1}{4}$	UCCX11-204D1						UC212-204D1	CX11D1	
$2\frac{5}{16}$	UCCX11-205D1						UC212-205D1	CX11D1	
60	UCCX12D1	160	44	3	65.1	25.4	UCX12D1	CX12D1	5.0
$2\frac{3}{8}$	UCCX12-206D1	6.2992	$1\frac{47}{64}$	0.118	2.5630	1.000	UCX12-206D1	CX12D1	11
$2\frac{7}{16}$	UCCX12-207D1						UCX12-207D1	CX12D1	

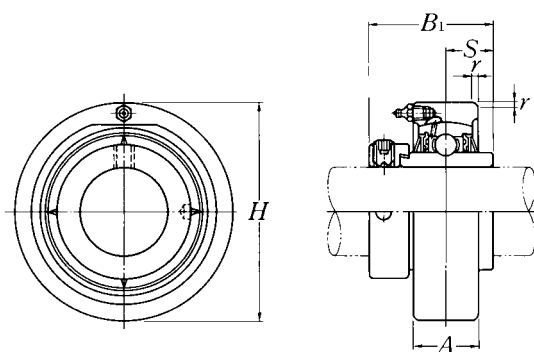
Remarks: 1) These numbers indicate relubricatable type. If maintenance free type is needed, please order without suffix "D1".
 Note: Please refer to page 25 for size of grease fitting.

**Cylindrical cartridge units cast housing
Eccentric locking collar type**



Shaft dia.	Unit number ¹⁾	Nominal dimensions					Bearing number	Housing number	Mass of unit
		mm		inch					
mm inch		H	A	r	B ₁	S		kg lb	
20 3/4	UEL204D1W3	72	20	2	43.7	17.1	UEL204D1W3	C204D1	0.6
	UEL204-012D1W3	2.8346	25/32	0.079	1.720	0.673	UEL204-012D1W3	C204D1	1.3
25 13/16 7/8 15/16 1	UEL205D1W3	80	22	2	44.4	17.5	UEL205D1W3	C205D1	0.8
	UEL205-013D1W3	3.1496	55/64	0.079	1.748	0.689	UEL205-013D1W3	C205D1	1.8
	UEL205-014D1W3						C205D1		
	UEL205-015D1W3						C205D1		
UEL205-100D1W3	C205D1								
30 1 1/16 1 1/8 1 3/16 1 1/4	UEL206D1W3	85	27	2	48.4	18.3	UEL206D1W3	C206D1	1.0
	UEL206-101D1W3	3.3465	1 1/16	0.079	1.906	0.720	UEL206-101D1W3	C206D1	2.2
	UEL206-102D1W3						C206D1		
	UEL206-103D1W3						C206D1		
UEL206-104D1W3	C206D1								
35 1 1/4 1 5/16 1 3/8 1 7/16	UEL207D1W3	90	28	2	51.1	18.8	UEL207D1W3	C207D1	1.1
	UEL207-104D1W3	3.5433	1 7/64	0.079	2.012	0.740	UEL207-104D1W3	C207D1	2.4
	UEL207-105D1W3						C207D1		
	UEL207-106D1W3						C207D1		
UEL207-107D1W3	C207D1								
40 1 1/2 1 9/16	UEL208D1W3	100	30	2.5	56.3	21.4	UEL208D1W3	C208D1	1.4
	UEL208-108D1W3	3.9370	1 3/16	0.098	2.217	0.843	UEL208-108D1W3	C208D1	3.1
	UEL208-109D1W3						C208D1		
45 1 5/8 1 11/16 1 3/4	UEL209D1W3	110	31	2.5	56.3	21.4	UEL209D1W3	C209D1	1.7
	UEL209-110D1W3	4.3307	1 7/32	0.098	2.217	0.843	UEL209-110D1W3	C209D1	3.7
	UEL209-111D1W3						C209D1		
UEL209-112D1W3	C209D1								
50 1 13/16 1 7/8 1 15/16 2	UEL210D1W3	120	33	2.5	62.7	24.6	UEL210D1W3	C210D1	2.1
	UEL210-113D1W3	4.7244	1 19/64	0.098	2.469	0.969	UEL210-113D1W3	C210D1	4.6
	UEL210-114D1W3						C210D1		
	UEL210-115D1W3						C210D1		
UEL210-200D1W3	C210D1								

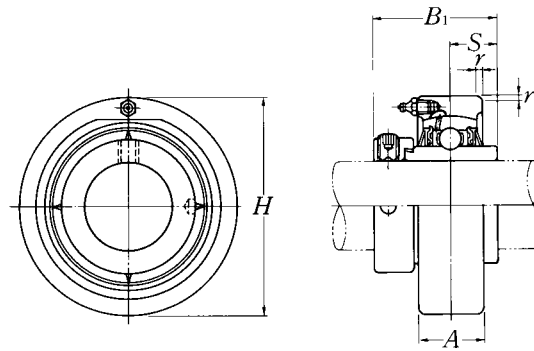
Remarks: 1) These numbers indicate relubricatable type. If maintenance free type is needed, please order without suffix "D1".
Note: Please refer to page 25 for size of grease fitting.



Shaft dia.	Unit number ¹⁾	Nominal dimensions					Bearing number	Housing number	Mass of unit
		<i>H</i>	<i>A</i>	<i>r</i>	<i>B₁</i>	<i>S</i>			
mm inch			mm	inch				kg lb	
55	UEL211D1W3	125	35	2.5	71.4	27.8	UEL211D1W3	C211D1	2.4
2	UEL211-200D1W3						UEL211-200D1W3	C211D1	
2¹/₁₆	UEL211-201D1W3	4.9213	1 ³ / ₈	0.098	2.811	1.094	UEL211-201D1W3	C211D1	5.3
2¹/₈	UEL211-202D1W3						UEL211-202D1W3	C211D1	
2³/₁₆	UEL211-203D1W3						UEL211-203D1W3	C211D1	
60	UEL212D1W3	130	38	2.5	77.8	31	UEL212D1W3	C212D1	2.9
2¹/₄	UEL212-204D1W3						UEL212-204D1W3	C212D1	
2⁵/₁₆	UEL212-205D1W3	5.1181	1 ¹ / ₂	0.098	3.063	1.220	UEL212-205D1W3	C212D1	6.4
2³/₈	UEL212-206D1W3						UEL212-206D1W3	C212D1	
2⁷/₁₆	UEL212-207D1W3						UEL212-207D1W3	C212D1	

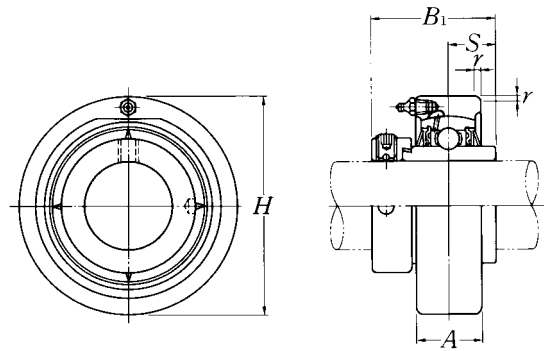
Remarks: 1) These numbers indicate relubricatable type. If maintenance free type is needed, please order without suffix "D1".
 Note: Please refer to page 25 for size of grease fitting.

**Cylindrical cartridge units cast housing
Eccentric locking collar type**



Shaft dia.	Unit number ¹⁾	Nominal dimensions					Bearing number	Housing number	Mass of unit
		mm		inch					
mm inch		H	A	r	B ₁	S		kg lb	
25	UELC305D1W3	90	26	2.5	46.8	16.7	UEL305D1W3	C305D1	1.1
$1\frac{3}{16}$	UELC305-013D1W3	3.5433	$1\frac{1}{32}$	0.098	1.843	0.657	UEL305-013D1W3	C305D1	2.4
$\frac{7}{8}$	UELC305-014D1W3						UEL305-014D1W3	C305D1	
$1\frac{5}{16}$	UELC305-015D1W3						UEL305-015D1W3	C305D1	
1	UELC305-100D1W3						UEL305-100D1W3	C305D1	
30	UELC306D1W3	100	28	2.5	50	17.5	UEL306D1W3	C306D1	1.5
$1\frac{1}{16}$	UELC306-101D1W3	3.9370	$1\frac{7}{64}$	0.098	1.969	0.689	UEL306-101D1W3	C306D1	3.3
$1\frac{1}{8}$	UELC306-102D1W3						UEL306-102D1W3	C306D1	
$1\frac{3}{16}$	UELC306-103D1W3						UEL306-103D1W3	C306D1	
35	UELC307D1W3	110	32	3	51.6	18.3	UEL307D1W3	C307D1	1.8
$1\frac{1}{4}$	UELC307-104D1W3	4.3307	$1\frac{17}{64}$	0.118	2.031	0.720	UEL307-104D1W3	C307D1	4.0
$1\frac{5}{16}$	UELC307-105D1W3						UEL307-105D1W3	C307D1	
$1\frac{3}{8}$	UELC307-106D1W3						UEL307-106D1W3	C307D1	
$1\frac{7}{16}$	UELC307-107D1W3						UEL307-107D1W3	C307D1	
40	UELC308D1W3	120	34	3	57.1	19.8	UEL308D1W3	C308D1	2.3
$1\frac{1}{2}$	UELC308-108D1W3	4.7244	$1\frac{11}{32}$	0.118	2.248	0.780	UEL308-108D1W3	C308D1	5.1
$1\frac{9}{16}$	UELC308-109D1W3						UEL308-109D1W3	C308D1	
45	UELC309D1W3	130	38	3.5	58.7	19.8	UEL309D1W3	C309D1	2.9
$1\frac{5}{8}$	UELC309-110D1W3	5.1181	$1\frac{1}{2}$	0.138	2.311	0.780	UEL309-110D1W3	C309D1	6.4
$1\frac{11}{16}$	UELC309-111D1W3						UEL309-111D1W3	C309D1	
$1\frac{3}{4}$	UELC309-112D1W3						UEL309-112D1W3	C309D1	
50	UELC310D1W3	140	40	3.5	66.6	24.6	UEL310D1W3	C310D1	3.5
$1\frac{13}{16}$	UELC310-113D1W3	5.5118	$1\frac{37}{64}$	0.138	2.622	0.969	UEL310-113D1W3	C310D1	7.7
$1\frac{7}{8}$	UELC310-114D1W3						UEL310-114D1W3	C310D1	
$1\frac{15}{16}$	UELC310-115D1W3						UEL310-115D1W3	C310D1	
55	UELC311D1W3	150	44	3.5	73	27.8	UEL311D1W3	C311D1	4.2
2	UELC311-200D1W3	5.9055	$1\frac{47}{64}$	0.138	2.874	1.094	UEL311-200D1W3	C311D1	9.3
$2\frac{1}{16}$	UELC311-201D1W3						UEL311-201D1W3	C311D1	
$2\frac{1}{8}$	UELC311-202D1W3						UEL311-202D1W3	C311D1	
$2\frac{3}{16}$	UELC311-203D1W3						UEL311-203D1W3	C311D1	

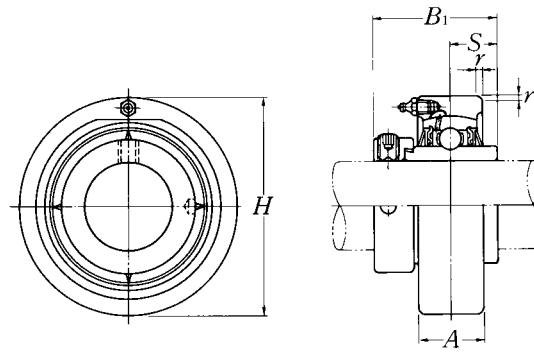
Remarks: 1) These numbers indicate relubricatable type. If maintenance free type is needed, please order without suffix "D1".
Note: Please refer to page 25 for size of grease fitting.



Shaft dia.	Unit number ¹⁾	Nominal dimensions					Bearing number	Housing number	Mass of unit
		mm		inch					
mm inch		H	A	r	B ₁	S			kg lb
60	UEL312D1W3	160	46	3.5	79.4	30.95	UEL312D1W3	C312D1	5.1
2 1/4	UEL312-204D1W3						UEL312-204D1W3	C312D1	
2 5/16	UEL312-205D1W3	6.2992	1 13/16	0.138	3.126	1.219	UEL312-205D1W3	C312D1	11
2 3/8	UEL312-206D1W3						UEL312-206D1W3	C312D1	
2 7/16	UEL312-207D1W3						UEL312-207D1W3	C312D1	
65	UEL313D1W3	170	50	3.5	85.7	32.55	UEL313D1W3	C313D1	6.2
2 1/2	UEL313-208D1W3						UEL313-208D1W3	C313D1	
2 9/16	UEL313-209D1W3	6.6929	1 31/32	0.138	3.374	1.281	UEL313-209D1W3	C313D1	14
70	UEL314D1W3	180	52	4	92.1	34.15	UEL314D1W3	C314D1	7.2
2 5/8	UEL314-210D1W3						UEL314-210D1W3	C314D1	
2 11/16	UEL314-211D1W3	7.0866	2 3/64	0.157	3.626	1.344	UEL314-211D1W3	C314D1	16
2 3/4	UEL314-212D1W3						UEL314-212D1W3	C314D1	
75	UEL315D1W3	190	55	4	100	37.3	UEL315D1W3	C315D1	8.4
2 13/16	UEL315-213D1W3						UEL315-213D1W3	C315D1	
2 7/8	UEL315-214D1W3	7.4803	2 11/64	0.157	3.937	1.469	UEL315-214D1W3	C315D1	19
2 15/16	UEL315-215D1W3						UEL315-215D1W3	C315D1	
3	UEL315-300D1W3						UEL315-300D1W3	C315D1	
80	UEL316D1W3	200	60	4	106.4	40.5	UEL316D1W3	C316D1	10
3 1/16	UEL316-301D1W3						UEL316-301D1W3	C316D1	
3 1/8	UEL316-302D1W3	7.8740	2 23/64	0.157	4.189	1.594	UEL316-302D1W3	C316D1	22
3 3/16	UEL316-303D1W3						UEL316-303D1W3	C316D1	
85	UEL317D1W3	215	64	4	109.5	42.05	UEL317D1W3	C317D1	13
3 1/4	UEL317-304D1W3						UEL317-304D1W3	C317D1	
3 5/16	UEL317-305D1W3	8.4646	2 33/64	0.157	4.311	1.656	UEL317-305D1W3	C317D1	29
3 7/16	UEL317-307D1W3						UEL317-307D1W3	C317D1	
90	UEL318D1W3	225	66	4	115.9	43.65	UEL318D1W3	C318D1	14
3 7/16	UEL318-307D1W3	8.8583	2 19/32	0.157	4.563	1.719	UEL318-307D1W3	C318D1	31
3 1/2	UEL318-308D1W3						UEL318-308D1W3	C318D1	

Remarks: 1) These numbers indicate relubricatable type. If maintenance free type is needed, please order without suffix "D1".
 Note: Please refer to page 25 for size of grease fitting.

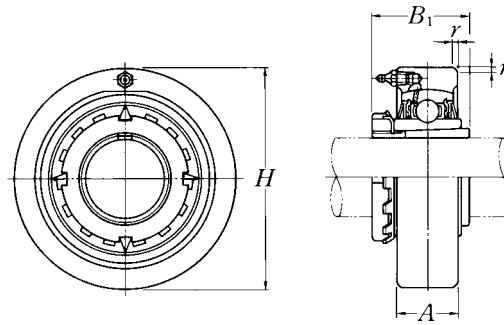
**Cylindrical cartridge units cast housing
Eccentric locking collar type**



Shaft dia.	Unit number ¹⁾	Nominal dimensions					Bearing number	Housing number	Mass of unit
		<i>H</i>	<i>A</i>	<i>r</i>	<i>B</i> ₁	<i>S</i>			
mm inch		mm	inch					kg lb	
95	UEL319D1W3	240	72	4	122.3	38.9	UEL319D1W3	C319D1	17
3⁵/₈	UEL319-310D1W3						UEL319-310D1W3	C319D1	
3¹¹/₁₆	UEL319-311D1W3	9.4488	2 ⁵³ / ₆₄	0.157	4.815	1.531	UEL319-311D1W3	C319D1	37
3³/₄	UEL319-312D1W3						UEL319-312D1W3	C319D1	
100	UEL320D1W3	260	75	4	128.6	50	UEL320D1W3	C320D1	21
3¹³/₁₆	UEL320-313D1W3						UEL320-313D1W3	C320D1	
3⁷/₈	UEL320-314D1W3	10.2362	2 ⁶¹ / ₆₄	0.157	5.063	1.969	UEL320-314D1W3	C320D1	46
3¹⁵/₁₆	UEL320-315D1W3						UEL320-315D1W3	C320D1	
4	UEL320-400D1W3						UEL320-400D1W3	C320D1	
105	UEL321D1W3	260	75	4	139.7	48.4	UEL321D1W3	C321D1	22
110	UEL322D1W3	300	80	5	141.3	49.2	UEL322D1W3	C322D1	31

Remarks: 1) These numbers indicate relubricatable type. If maintenance free type is needed, please order without suffix "D1".
Note: Please refer to page 25 for size of grease fitting.

Cylindrical cartridge units cast housing Adapter type



Shaft dia. mm inch	Unit number ^{1) 2) 3)}	Nominal dimensions				Bearing number	Housing number	Mass of unit kg lb
		H	A	r	B ₁			
20 $\frac{3}{4}$	UKC205D1;H2305X	80	22	2	35	UK205D1;H2305X	C205D1	0.8
	UKC205D1;HE2305	3.1496	$\frac{55}{64}$	0.079	1.378	UK205D1;HE2305	C205D1	1.8
25 $\frac{7}{8}$ 1	UKC206D1;H2306X	85	27	2	38	UK206D1;H2306X	C206D1	0.9
	UKC206D1;HS2306	3.3465	$1\frac{1}{16}$	0.079	1.496	UK206D1;HS2306	C206D1	2.0
	UKC206D1;HE2306X					UK206D1;HE2306X	C206D1	
30 $1\frac{1}{8}$	UKC207D1;H2307X	90	28	2	43	UK207D1;H2307X	C207D1	1.1
	UKC207D1;HS2307	3.5433	$1\frac{7}{64}$	0.079	1.693	UK207D1;HS2307	C207D1	2.4
35 $1\frac{1}{4}$ $1\frac{3}{8}$	UKC208D1;H2308X	100	30	2.5	46	UK208D1;H2308X	C208D1	1.4
	UKC208D1;HE2308X	3.9370	$1\frac{3}{16}$	0.098	1.811	UK208D1;HE2308X	C208D1	3.1
	UKC208D1;HS2308X					UKC208D1;HS2308X	C208D1	
40 $1\frac{7}{16}$ $1\frac{1}{2}$ $1\frac{5}{8}$	UKC209D1;H2309X	110	31	2.5	50	UK209D1;H2309X	C209D1	1.7
	UKC209D1;HA2309					UK209D1;HA2309	C209D1	
	UKC209D1;HE2309X	4.3307	$1\frac{7}{32}$	0.098	1.969	UK209D1;HE2309X	C209D1	3.7
	UKC209D1;HS2309X					UK209D1;HS2309X	C209D1	
45 $1\frac{5}{8}$ $1\frac{11}{16}$ $1\frac{3}{4}$	UKC210D1;H2310X	120	33	2.5	55	UK210D1;H2310X	C210D1	2.1
	UKC210D1;HS2310					UK210D1;HS2310	C210D1	
	UKC210D1;HA2310	4.7244	$1\frac{19}{64}$	0.098	2.165	UK210D1;HA2310	C210D1	4.6
	UKC210D1;HE2310X					UK210D1;HE2310X	C210D1	
50 $1\frac{7}{8}$ $1\frac{15}{16}$ 2	UKC211D1;H2311X	125	35	2.5	59	UK211D1;H2311X	C211D1	2.4
	UKC211D1;HS2311					UK211D1;HS2311	C211D1	
	UKC211D1;HA2311	4.9213	$1\frac{3}{8}$	0.098	2.323	UK211D1;HA2311	C211D1	5.3
	UKC211D1;HE2311XY					UK211D1;HE2311XY	C211D1	
55 $2\frac{1}{8}$	UKC212D1;H2312X	130	38	2.5	62	UK212D1;H2312X	C212D1	2.6
	UKC212D1;HS2312	5.1181	$1\frac{1}{2}$	0.098	2.441	UK212D1;HS2312	C212D1	5.7
60 $2\frac{3}{16}$ $2\frac{1}{4}$ $2\frac{3}{8}$	UKC213D1;H2313X	140	40	3	65	UK213D1;H2313X	C213D1	3.2
	UKC213D1;HA2313					UK213D1;HA2313	C213D1	
	UKC213D1;HE2313X	5.5118	$1\frac{37}{64}$	0.118	2.559	UK213D1;HE2313X	C213D1	7.1
	UKC213D1;HS2313X					UK213D1;HS2313X	C213D1	

Remarks: 1) These numbers indicate relubricatable type. If maintenance free type is needed, please order without suffix "D1".

2) Adapter number with suffix "X" means a narrow slot type adapter sleeve.

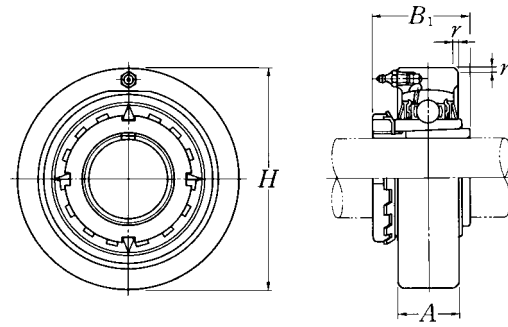
In this case the lock washer with the straight inner prong should be used.

3) For HE2311XY, screw thread pitch different from the standard is applied, because of the thin thread section of sleeve.

To distinguish it, a suffix "Y" is added.

Note: Please refer to page 25 for size of grease fitting.

Cylindrical cartridge units cast housing Adapter type



Shaft dia.	Unit number ^{1) 2) 3)}	Nominal dimensions				Bearing number	Housing number	Mass of unit
		mm	inch	mm	inch			
mm inch		H	A	r	B ₁			kg lb
20 3/4	UKC305D1;H2305X	90	26	2.5	35	UK305D1;H2305X	C305D1	1.2
	UKC305D1;HE2305	3.5433	1 1/32	0.098	1.378	UK305D1;HE2305	C305D1	2.6
25 7/8 1	UKC306D1;H2306X	100	28	2.5	38	UK306D1;H2306X	C306D1	1.4
	UKC306D1;HS2306	3.9370	1 7/64	0.098	1.496	UK306D1;HS2306	C306D1	3.1
	UKC306D1;HE2306X					C306D1		
30 1 1/8	UKC307D1;H2307X	110	32	3	43	UK307D1;H2307X	C307D1	1.8
	UKC307D1;HS2307	4.3307	1 17/64	0.118	1.693	UK307D1;HS2307	C307D1	4.0
35 1 1/4 1 3/8	UKC308D1;H2308X	120	34	3	46	UK308D1;H2308X	C308D1	2.2
	UKC308D1;HE2308X	4.7244	1 11/32	0.118	1.811	UK308D1;HE2308X	C308D1	4.9
	UKC308D1;HS2308X					C308D1		
40 1 7/16 1 1/2 1 5/8	UKC309D1;H2309X	130	38	3.5	50	UK309D1;H2309X	C309D1	2.8
	UKC309D1;HA2309	5.1181	1 1/2	0.138	1.969	UK309D1;HA2309	C309D1	
	UKC309D1;HE2309X					C309D1	6.2	
	UKC309D1;HS2309X					C309D1		
45 1 5/8 1 11/16 1 3/4	UKC310D1;H2310X	140	40	3.5	55	UK310D1;H2310X	C310D1	3.3
	UKC310D1;HS2310	5.5118	1 37/64	0.138	2.165	UK310D1;HS2310	C310D1	7.3
	UKC310D1;HA2310					C310D1		
	UKC310D1;HE2310X					C310D1		
50 1 7/8 1 15/16 2	UKC311D1;H2311X	150	44	3.5	59	UK311D1;H2311X	C311D1	3.9
	UKC311D1;HS2311	5.9055	1 47/64	0.138	2.323	UK311D1;HS2311	C311D1	
	UKC311D1;HA2311					C311D1	8.6	
	UKC311D1;HE2311XY					C311D1		
55 2 1/8	UKC312D1;H2312X	160	46	3.5	62	UK312D1;H2312X	C312D1	4.7
	UKC312D1;HS2312	6.2992	1 13/16	0.138	2.441	UK312D1;HS2312	C312D1	10
60 2 3/16 2 1/4 2 3/8	UKC313D1;H2313X	170	50	3.5	65	UK313D1;H2313X	C313D1	5.6
	UKC313D1;HA2313	6.6929	1 31/32	0.138	2.559	UK313D1;HA2313	C313D1	
	UKC313D1;HE2313X					C313D1	12	
	UKC313D1;HS2313X					C313D1		

Remarks: 1) These numbers indicate relubricatable type. If maintenance free type is needed, please order without suffix "D1".

2) Adapter number with suffix "X" means a narrow slot type adapter sleeve.

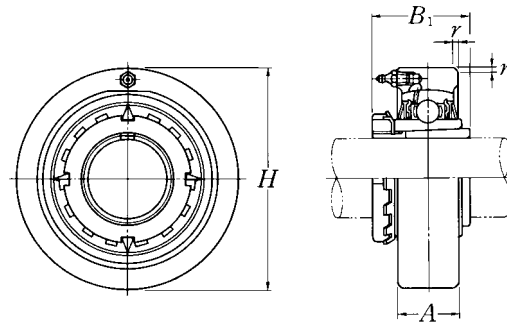
In this case the lock washer with the straight inner prong should be used.

3) For HE2311XY, screw thread pitch different from the standard is applied, because of the thin thread section of sleeve.

To distinguish it, a suffix "Y" is added.

Note: Please refer to page 25 for size of grease fitting.

Cylindrical cartridge units cast housing Adapter type



Shaft dia.	Unit number ^{1) 2) 3)}	Nominal dimensions				Bearing number	Housing number	Mass of unit
		mm	inch	mm	inch			
mm inch		H	A	r	B ₁			kg lb
65 2 ⁷ / ₁₆ 2 ¹ / ₂	UKC315D1;H2315X	190 7.4803	55 2 ¹¹ / ₁₆	4 0.157	73 2.874	UK315D1;H2315X	C315D1	7.9
	UKC315D1;HA2315					C315D1	17	
	UKC315D1;HE2315X					C315D1		
70 2 ¹¹ / ₁₆ 2 ³ / ₄	UKC316D1;H2316X	200 7.8740	60 2 ²³ / ₆₄	4 0.157	78 3.071	UK316D1;H2316X	C316D1	9.2
	UKC316D1;HA2316					C316D1	20	
	UKC316D1;HE2316X					C316D1		
75 2 ¹⁵ / ₁₆ 3	UKC317D1;H2317X	215 8.4646	64 2 ³³ / ₆₄	4 0.157	82 3.228	UK317D1;H2317X	C317D1	11
	UKC317D1;HA2317X					C317D1	24	
	UKC317D1;HE2317X					C317D1		
80 3 ³ / ₁₆	UKC318D1;H2318X	225 8.8583	66 2 ¹⁹ / ₃₂	4 0.157	86 3.386	UK318D1;H2318X	C318D1	13
	UKC318D1;HA2318X					C318D1	29	
85 3 ¹ / ₄	UKC319D1;H2319X	240 9.4488	72 2 ⁵³ / ₆₄	4 0.157	90 3.543	UK319D1;H2319X	C319D1	16
	UKC319D1;HE2319X					C319D1	35	
90 3 ⁷ / ₁₆ 3 ¹ / ₂	UKC320D1;H2320X	260 10.2362	75 2 ⁶¹ / ₆₄	4 0.157	97 3.819	UK320D1;H2320X	C320D1	20
	UKC320D1;HA2320					C320D1	44	
	UKC320D1;HE2320X					C320D1		
100	UKC322D1;H2322X	300	80	5	105	UK322D1;H2322X	C322D1	29
110	UKC324D1;H2324X	320	90	5	112	UK324D1;H2324X	C324D1	35
115	UKC326D1;H2326	340	100	5	121	UK326D1;H2326	C326D1	43
125	UKC328D1;H2328	360	100	5	131	UK328D1;H2328	C328D1	49

Remarks: 1) These numbers indicate relubricatable type. If maintenance free type is needed, please order without suffix "D1".

2) Adapter number with suffix "X" means a narrow slot type adapter sleeve.

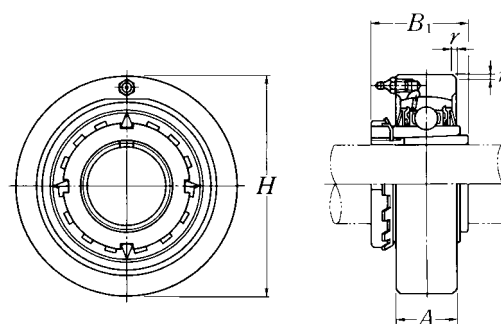
In this case the lock washer with the straight inner prong should be used.

3) For HE2311XY, screw thread pitch different from the standard is applied, because of the thin thread section of sleeve.

To distinguish it, a suffix "Y" is added.

Note: Please refer to page 25 for size of grease fitting.

Cylindrical cartridge units cast housing Adapter type



Shaft dia.	Unit number ^{1) 2) 3)}	Nominal dimensions				Bearing number	Housing number	Mass of unit
		H	A	r	B ₁			
mm inch		mm	inch				kg lb	
20 3/4	UKCX05D1;H2305X	90	27	2	35	UKX05D1;H2305X	CX05D1	1.1
	UKCX05D1;HE2305	3.5433	1 1/16	0.079	1.378	UKX05D1;HE2305	CX05D1	2.4
25 7/8 1	UKCX06D1;H2306X	100	30	2.5	38	UKX06D1;H2306X	CX06D1	1.4
	UKCX06D1;HS2306	3.9370	1 3/16	0.098	1.496	UKX06D1;HS2306	CX06D1	3.1
	UKCX06D1;HE2306X					UKX06D1;HE2306X	CX06D1	
30 1 1/8	UKCX07D1;H2307X	110	34	2.5	43	UKX07D1;H2307X	CX07D1	1.9
	UKCX07D1;HS2307	4.3307	1 11/32	0.098	1.693	UKX07D1;HS2307	CX07D1	4.2
35 1 1/4 1 3/8	UKCX08D1;H2308X	120	38	2.5	46	UKX08D1;H2308X	CX08D1	2.5
	UKCX08D1;HE2308X	4.7244	1 1/2	0.098	1.811	UKX08D1;HE2308X	CX08D1	5.5
	UKCX08D1;HS2308X					UKX08D1;HS2308X	CX08D1	
40 1 7/16 1 1/2 1 5/8	UKCX09D1;H2309X	120	38	2.5	50	UKX09D1;H2309X	CX09D1	2.4
	UKCX09D1;HA2309					UKX09D1;HA2309	CX09D1	
	UKCX09D1;HE2309X	4.7244	1 1/2	0.098	1.969	UKX09D1;HE2309X	CX09D1	5.3
	UKCX09D1;HS2309X					UKX09D1;HS2309X	CX09D1	
45 1 5/8 1 11/16 1 3/4	UKCX10D1;H2310X	130	40	2.5	55	UKX10D1;H2310X	CX10D1	2.9
	UKCX10D1;HS2310					UKX10D1;HS2310	CX10D1	
	UKCX10D1;HA2310	5.1181	1 37/64	0.098	2.165	UKX10D1;HA2310	CX10D1	6.4
	UKCX10D1;HE2310X					UKX10D1;HE2310X	CX10D1	
50 1 7/8 1 15/16 2	UKCX11D1;H2311X	150	42	3	59	UKX11D1;H2311X	CX11D1	4.2
	UKCX11D1;HS2311					UKX11D1;HS2311	CX11D1	
	UKCX11D1;HA2311	5.9055	1 21/32	0.118	2.323	UKX11D1;HA2311	CX11D1	9.3
	UKCX11D1;HE2311XY					UKX11D1;HE2311X	CX11D1	
55 2 1/8	UKCX12D1;H2312X	160	44	3	62	UKX12D1;H2312X	CX12D1	4.8
	UKCX12D1;HS2312	6.2992	1 47/64	0.118	2.441	UKX12D1;HS2312	CX12D1	11

Remarks: 1) These numbers indicate relubricatable type. If maintenance free type is needed, please order without suffix "D1".

2) Adapter number with suffix "X" means a narrow slot type adapter sleeve.

In this case the lock washer with the straight inner prong should be used.

3) For HE2311XY, screw thread pitch different from the standard is applied, because of the thin thread section of sleeve.

To distinguish it, a suffix "Y" is added.

Note: Please refer to page 25 for size of grease fitting.